



April, 2023

NEWSLETTER

vol. 57, No. 4

# Events at a Glance

## April

- Mondays: **Irish Music Session.** Landmark Tavern, 8-11pm, **F2F** †
- Wednesdays: **Sunnyside Folk Club**, Sanger Hall, Sunnyside, 8pm, **F2F** †
- Sat, 1: **Pete & Woody: an Unlikely Friendship. Multimedia presentation;** (hybrid) Peoples' Voice Cafe, 8pm †
- Sun, 2: **Sea Chanteys & Maritime Music**, hybrid at the Seaport, 2pm †
- Mon, 10: (Zoom) **Board of Directors Meeting**, 7:15pm; see p. 5
- Sat, 15: **CANCELED**-Archie Fisher (livestream from England), 3pm EDT †
- Sat, 15: **The Nordic Fiddlers Bloc** (hybrid from Old Songs), 7:30pm †
- Sun, 16: **Staten Island hybrid Shanty Sing**, 2pm †
- Sun, 16 **John McCutcheon: Hammer Dulcimer!**; *livestreamed*; 7pm †
- Sat, 22: **Nicolas Boulерice with Frédéric Samson — Confiné aux voyages** (hybrid from Old Songs, Voorheesville), 7:30pm †
- Sat, 29: **Rhythm Future Quartet** (lhybrid from Old Songs), 7:30pm †
- Sat, 29: **Steff Reed + Marie Mularczyk O'Connell & the Mountain Maidens;** (hybrid) Peoples' Voice Cafe, 8pm †

## May

- Mondays: **Irish Music Session. Landmark Tavern**, 8-11pm, **F2F** †
- Wednesdays: **Sunnyside Folk Club**, Sanger Hall, Sunnyside, 8pm, **F2F** †
- Sat, 6: **North Sea Gas** (hybrid from Old Songs), 7:30pm †
- Sun, 7: **Sea Chanteys & Maritime Music**, hybrid at the Seaport, 2pm †
- Mon, 8: (Zoom) **Board of Directors Meeting**, 7:15pm; see p. 5
- Sat, 13: **Sam Gleaves + Carrie & Michael Kline;** Peoples' Voice Cafe, †
- Sat, 16 **John McCutcheon: Jackpot!**; *livestreamed*; 7pm †
- Sun, 21: **Staten Island hybrid Shanty Sing**, 2pm †

## Details on Pages 2-4

(**F2F**)= Face to Face=in person; **hybrid**=a F2F event also livestreamed  
† = not a club event, but one we co-sponsor or co-list

## Table of Contents

FMSNY Events at a Glance.....1	Folk Calendar Listing Info. ....11
Events Details.....2-4	Folk Music Society Info.....13
From The Editor.....4	Mark Hamburg Ad .....14
The Folk Process.....4	Peoples' Voice Cafe Ad.....14
Topical Listings of Events.....5	T-shirt Ad.....14
Frank Woerner Obituary.....6	Pinewoods Hot Lines.....15
Folk Calendar Listings .....8	Membership Form - Join Us.....16

# Events Details

## **(F2F) Irish Traditional Music Session: Mondays, 8-11pm**

Tenor banjo, harmonica and fiddle player Don Meade and friends get together every Monday night with a featured performer for an Irish music session in the back room of this historic Hell's Kitchen bar/restaurant. Free admission food and drink are available. Musicians, singers, & listeners welcome. At the Landmark Tavern, 626 11<sup>th</sup> Ave. (on 46<sup>th</sup> St) co-sponsored with and led by Don Meade info 212-247-2562 or [www.blarneystar.com/](http://www.blarneystar.com/). See website for featured performers †

## **(F2F) Sunnyside Folk Club: Wednesdays; 8pm**

The Sunnyside Folk Club (formerly the Sunnyside Singers Club) is a weekly in-person session for people who like to sing. The club meets every Wednesday from 8:00 to 11:00 PM inside Sanger Hall, an Irish-American pub at 48-20 Skillman Avenue (corner of 49<sup>th</sup> Street) in Sunnyside, Queens, NY. Come bring voices and songs to share. Acoustic instruments are also welcome. Traditional songs are especially welcome. About once a month there may be a featured guest performer for part of the evening. No added admission charge, but purchase of food and/or drink expected. And there is a request for a voluntary contribution whenever there is a guest performer. Guest Performers to be announced <https://www.facebook.com/sunnysidefolkclub/> †

## **(F2F & livestream) Pete & Woody: an Unlikely Friendship: Multimedia presentation; Saturday, April 1<sup>st</sup>; 8pm**

Created by folksingers Pat Lamanna and Steve Suffet, the multimedia presentation *Pete & Woody: an Unlikely Friendship*, explores the relationship between Pete Seeger and Woody Guthrie. Comprising 14 songs performed live by Pat and Steve, 18 historic slides, and a 3,500 word narration read by Richard Mattocks, the presentation follows the changing relationship between Pete & Woody over the years, and much of Woody's worldwide popularity today is a direct or indirect result of Pete's efforts. It will be followed by a Q&A and discussion.

Cosponsored with and at the Peoples' Voice Cafe at the Judson Memorial Church Assembly Hall, 239 Thompson St. between West 3<sup>rd</sup> & West 4<sup>th</sup> Streets, Manhattan. Doors open 7:15pm. Mask required. Proof of Covid vaccination and/or negative Covid test strongly suggested but not required. Suggested contribution: \$20. PVC subscribers, FMSNY or Judson members, students, youth: \$12. Simultaneously live streamed. Info: <https://www.peoplesvoicecafe.org> or 212-787-3903. †

## **(hybrid) Sea Chanteys & Maritime Music; Sunday; April 2<sup>nd</sup>; 2pm**

South Street Seaport Museum's monthly Sea Chanteys and Maritime Music program, the original NYC chantey sing, continues on the first Sunday of every month. This Winter, each of the hybrid Chantey Sing events will include a 45-minute performance by various local artists singing a variety of traditional maritime work songs and ballads. Attendees are invited to sing along with the featured guests or just sit back and enjoy their performance. Following the set, the stage will open for a round-robin where attendees—in person and virtual—can sing and share the chantey of their choice that will be heard by all. The event is free, and advance registration encouraged but not required. South Street Seaport Museum 12 Fulton Street, 212-748-8600 <https://southstreetseaportmuseum.org/chanteysing> †

*continued next page*

Events Details, continued from previous page

**Archie Fisher (livestream from England),  
CANCELED Saturday, April 15<sup>th</sup>; 3pm (EDT)**

Archie was born in Glasgow into a large singing family, which yielded three professional singers—Archie and his sisters Ray and Cilla Fisher. His father's appreciation of many musical styles (opera, vaudeville, traditional ballads) proved to be a heavy influence on Archie's music while his mother, a native Gaelic speaker from the Outer Hebrides, influenced the lyrical quality of his songwriting.

This concert is streaming live from England. We are partnering with Falcon House Concerts, Old Songs, FSSGB, and FSGW to bring you this event. †

**(hybrid) The Nordic Fiddlers Bloc; Saturday; April 15<sup>th</sup>; 7:30pm**

Live from Voorheesville, NY, and streaming, co-sponsored with Old Songs

A fiddle trio from Norway, Sweden and the Shetland Islands who swiftly gained a reputation for their gripping and unique blend of fiddle music. Tickets and further info: <https://oldsongs.org/event/nordic-fiddlers-bloc> †

**John McCutcheon: Hammer Dulcimer! (livestream),  
Sunday, April 16<sup>th</sup>; 7pm (EDT)**

John was one of the early champions of the hammer dulcimer revival and is considered one of the world masters on this beautiful instrument. Join John for an evening of traditional and original dulcimer music, from jigs & reels, to ragtime, to classical, to lovely Irish harp compositions and see just why he is held in such high regard. Get tickets from Mandolin <http://bit.ly/3LKMI95> †

**(Hybrid) Shanty Sing Session: Sunday, April 19<sup>th</sup>; 2-4pm**

We co-sponsor the Shanty Sing on the 3<sup>rd</sup> Sunday of the month. The William Main Doerflinger Memorial Sea Shanty Sessions at the Noble Maritime Collection (to give the official title) has registration information on: <https://noblemaritime.org/events>. Previous Sessions are on-line, streaming at: <https://www.facebook.com/noblemaritime/videos> And see the documentary of this event (from when it was in person): [vimeo.com/250883513](https://vimeo.com/250883513) password: harbortown. †

**(hybrid) Nicolas Boulerice with Frédéric Samson —  
Confiné Aux Voyages; Saturday; April 22<sup>th</sup>; 7:30pm**

Live from Voorheesville, NY, and streaming, co-sponsored with Old Songs

Nicolas' magnificent voice joins double bassist Frédéric to bring you *Confiné Aux Voyages* which delivers magnificent traditional laments woven together by contemplative soundscapes captured in Nicolas' hometown of Saint-Antoine-sur-Richelieu. Tickets and further info: <https://oldsongs.org/event/nicolas-boulerice/> †

**(F2F & livestream) Steff Reed + Marie Mularczyk O'Connell & the  
Mountain Maidens; Saturday, April 29<sup>th</sup>; 8pm**

Steff Reed is a singer, songwriter, producer, multi-instrumentalist, educator, and activist. By sharing his story, Reed inspires audiences with his spiritual, uplifting energy, blending folk rock, alternative, and pop to culminate in humanitarian messages of resilience, healing, and self-betterment. <http://iamsteffreed.com>  
<https://soundcloud.com/IAmSteffReed>

Marie Mularczyk O'Connell & the Mountain Maidens are three dynamic voices blended in splendid ancient and modern harmonies that will lift your spirit, excite your senses and warm your heart. They sing ballads, folk songs, Medieval, Irish

continued on next page

*Events Details, continued from previous page*

Traditional music, love songs, country and gospel songs including themes of social justice. Marie plays guitar, banjo, mandolin, dulcimer, Irish Bouzouki, dumbec, bones and spoons. Candice (Candy) Baranello is also a member of the Long Island group Wild Ginger. She plays dulcimer, washboard, and bodhran. Lorraine Berger is a member of the Huntington Choral Society, plays guitar and flamenco castanets, and sings in a beautiful alto. <https://www.facebook.com/groups/738007577599212>

Cosponsored with and at the Peoples' Voice Cafe at the Judson Memorial Church Assembly Hall, 239 Thompson St. between West 3<sup>rd</sup> & West 4<sup>th</sup> Streets, Manhattan. Doors open 7:15pm. Mask required. Proof of Covid vaccination and/or negative Covid test strongly suggested but not required. Suggested contribution: \$20. PVC subscribers, FMSNY or Judson members, students, youth: \$12. Simultaneously live streamed. Info: <https://www.peoplesvoicecafe.org> or 212-787-3903. †

**(hybrid) Rhythm Future Quartet; Sat.; April 29<sup>th</sup>; 7:30pm**

Live from Voorheesville, NY, and streaming, co-sponsored with Old Songs

An acoustic jazz ensemble, Rhythm Future Quartet has a straightforward agenda: to keep the spirit of Gypsy jazz alive and expanding in today's musical universe. Get tickets and further info: <https://oldsongs.org/event/rhythm-future/> †

---

*From the Editor* 

Eileen Pentel

Spring is here and what a wonderful time for music! Our usual singing sessions continue—the Irish Music Sessions, the Sunnyside Folk Club, the Sea Chanteys and Maritime Music, and the Staten Island Shanty Sing. In addition, in concert, we have Archie Fisher, the Nordic Fiddlers Bloc and at the People's Voice Café, “Pete & Woody an Unlikely Friendship” presentation on April 1st and Steff Reed and the Mountain Maidens on April 29th.

We have sad news—Frank Woerner passed away. He will be missed.

TradMad Camp is scheduled for August 26-September 1st. It's time to make plans for attending. Pinewoods Camp is amazing and the music will be even more amazing. Register now: <http://www.tradmadcamp.org>

---

*The Folk Process*

by Ruth Lipman



Barbara Mehlman continues to pursue an impressive travel agenda. Last year, she went to Ecuador, the Galapagos, Israel, Jordan, Egypt, and Paris. She also explored the hidden villages of Tuscany and Umbria. This year, in spite of recent surgery for a shoulder replacement, she will go on a pickleball cruise to Bermuda, as well as venture to London, Spain, Portugal, Turkey, and Antarctica. And in 2024, she will spend six weeks in Sicily and also take a trip to Sardinia. Whew!

Joy Held is enjoying the heartland folk music club in Indiana. She's also busy with hiking, a book club, the gym, virtual events and time with friends and family. She reports that Berti is “flourishing in Florida” where he is writing a book about his family's experiences surviving the Holocaust. In addition, Berti is singing and researching Yiddish folk songs.

*continued next page*

## Topical Listing of Society Events

(see this month's details on pages 2 - 4)

### Concerts, Workshops & etc.

Peoples' Voice Cafe Concerts; Saturdays, 8pm †

April 1: *Pete & Woody: an Unlikely Friendship* †

April 29: *Steff Reed + Marie Mularczyk O'Connell & the Mountain Maidens* †

May 13: *Sam Gleaves + Carrie and Michael Kline* †

Livestream Falcon House Saturday Concerts, 3 pm (EDT) from England, †

April 15: **CANCELED** - Archie Fisher in concert, 3pm EDT †

Hybrid Old Songs Saturday Concerts, 7:30pm; live in Voorheesville & streaming †

April 15: *The Nordic Fiddlers Bloc* †

April 22: *Nicolas Boulерice with Frédéric Samson — Confiné aux voyages* †

April 29: *Rhythm Future Quartet* †

May 6: *North Sea Gas* †

John McCutcheon livestream concerts, 7:00pm (EDT) (through Mandolin) †

Sun, April 16: *John McCutcheon: Hammer Dulcimer!*

Sat, May 16: *John McCutcheon: Jackpot!*

### Weekends and Weeks

Aug. 26-Sept. 1: *TradMaD Camp* F2F at Pinewoods Camp, information and registration: <http://www.tradmadcamp.org>.

Late Oct. or early Nov. (date to be announced): Our **Fall Folk Music Weekend**.

### Sings and Informal Jams

**Irish Music Session:** Mondays at the Landmark Tavern, 8-11pm, F2F †

**Sunnyside Folk Club:** Sanger Hall, Wednesdays, 8pm, F2F †

**Sea Chanteys & Maritime Muisic, hybrid** at the South Street Seaport Museum:  
first Sunday 2-4pm, April 2, May 7, etc. †

**Staten Is. Hybrid Shanty Session:** 3<sup>rd</sup> Sun. of the month (April 16, May 21, etc.) †

**Brooklyn Outdoor Song Circle:** F2F, *second Saturday will resume in the Spring*, 2-4pm; Mount Prospect Prk, Bklyn †

**Folk Open Sing:** First Wed. in Brooklyn; *will resume when possible*.

**Gowanus Dredgers Boathouse Jam:** *will resume in the Spring*, [gowanuscanal.org](http://gowanuscanal.org) †

### Virtual Business Meetings, etc.

**Board of Directors Zoom Meeting,** 7:15pm, the 2<sup>nd</sup> Monday, (April 10, May 8, June 12, etc.). Info: 718-672-6399.

† = not run by the club, but one we co-sponsor or co-list

**F2F** = Face to Face = in person

---

*Folk Process; continued from previous page*

An exhibition of paintings by Gerald Marcus is on view until April 22, 2023 at the Prince Street Gallery, 547 West 27th St., New York, NY 10001 (646-230-0246) <[www.princestreetgallery.com](http://www.princestreetgallery.com)>. The gallery is open on Tuesday through Saturday from 11 AM until 6 PM. Thank you Rosalie Friend for this information.

We also have sad news. We have lost another dear member. Frank Woerner died recently. He shared so much of his talent, knowledge, time and friendship with us. Rest in peace, Frank your voice rang clear and hearty. See the obituary by Alison Kelly and Joy Bennett on the next page.

If you have news to share, please contact me at 372 Central Park West, New York, NY 10025 212-663-6309 [ruthlipman\(at\)msn.com](mailto:ruthlipman(at)msn.com)

**Frank Woerner 1937-2023**  
**by Alison Kelley & Joy Bennett**

Frank Woerner captivated audiences and brought folk music to life everywhere he sang since the mid 1960s. His enthusiasm was uncontainable as he joyously lifted his dynamic voice in song. Frank spent his life promoting, teaching, and continuing folk music in the NYC Area. Although he was most associated with sea songs and rousing chanteys, Frank's enormous repertoire was filled with songs from every genre of folk music from North America and the British Isles. He often accompanied himself on concertina, guitar, and banjo. He could sing for hours and never repeat a song. Beyond performing, his most cherished role was as a mentor and inspiration to generations of "folkies".

Frank's interest in folk music began in the 1950s listening to Woodie Guthrie and Pete Seeger, when in 1965 at Pinewoods Camp in Plymouth, MA, Louis (Louisa) Killen introduced attendees to music from the British Isles, as well as sea chanteys and other maritime music. "We were charged up to our eyebrows," said Frank. New Yorkers returned home so excited by the experience that with the organizational drive of Jerry Epstein and Bernie Klay, they formed the Folk Music Society of NY, AKA Pinewoods Folk Music Club, described by Frank as "a feeding trough," in the decades since its formation. In 1967 Frank and Bernie formed The X-Seamen's Institute with John Townley and Dan Aguiar, performing regularly at South Street Seaport, Mystic Seaport and numerous other maritime venues. The group recorded six albums of sea shanties for the Smithsonian Institution's Folkways Records label. Frank also appeared as a guest on many groups' albums including WaterSign, The NexTradition and The Johnson Girls – all groups that would not have existed without Frank's inspiration.

Poet Henry David Thoreau was one of Frank's non-musical inspirations. "Tis a gift to be simple" was Frank's motto. It is no wonder that he was modest in regard to his own impact on the folk world. As early as 1968 Frank was casting his net of influence and inspiration. Two young girls (Hilary and Alison Kelley) ages 2 and 4, experienced Frank performing at South Street one Tuesday evening. Just as Frank hearing Lou Killen changed the course of his life, his event changed the course of their lives in turn. Frank took the family under his wing. The girls sang at home, in school, wherever they went. As adults they sang every Wednesday and with Frank in a group called Out of Bedlam performing medieval music and English folk songs. Alison has called Frank her "Folk Father".

Joy Bennett was another person whose musical life was changed by Frank. In the early 1970s, David Kleiman took Joy to South Street to hear the X-Seamen's Institute on Tuesdays in the Summer, and then The X-Seamen conducted a series of sea music classes at NYU. Joy was swept away by the music, became a regular at the South St. Seaport chanteys and a volunteer at SSS Museum, and went on to found 2 musical groups, WaterSign with David Kleiman and The Johnson Girls with Bonnie Milner, and is a member of The NY Packet. Frank was Joy's friend for 48 years. These stories represent just a few of the ripples Frank has made in the pond of folk music. Like the sea, his reach was wide and deep. Each person he touched with his love and knowledge of the music in turn reached out to others, using Frank as an inspiration and example. Frank

continued to lift his voice in song every Wednesday night in Alison's living room and with The New York Packet, The Richmond Tavernacle Choir, Compass Rogues as well as helping to run the NY Chantey Sing and The Brooklyn Open Sing and appearing at The Good Coffee House and Exceedingly Good Song Night. Though the pandemic and his subsequent move to North Carolina ended his in-person participation in many events, he was in touch by phone and his reach continues to grow even now, through all the people he has helped or inspired in his lifetime. There are many stories that could likely fill a book. But we remember the times of the pure joy of raising our voices in song with Frank – he gave us a gift.

**Musical Groups:**

- The X-Seamen's Institute
- The Compass Rogues
- The Richmond Tavernacle Choir
- Frank Woerner and The Cruel Sisters
- Out of Bedlam
- The New York Packet

**Discography:**

- *Sing at the South Street Seaport* - The X-Seamen's Institute, 1973
- *Heart of Oak!* - The X-Seamen's Institute, 1976
- *Sea Songs*: Louis Killen, Stan Hugill and the X Seamen's Institute sing of Cape Horn sailing at the Seattle Chantey Festival, 1979
- *Sea Songs: Newport, Rhode Island- Songs from the Age of Sail* - Stan Hugill, X-Seamen's Institute and David Jones, 1980
- The Good Coffee House recording *Traditions, New Spirits & Holy Ground*, Frank Woerner with The Cruel Sisters), 1997
- *Favorite Sea Songs - Songs from the Age of Sail* - The X-Seamen's Institute, 1981
- *Classic Maritime Music from Smithsonian Folkways* - Various Artists, 2004
- A voice on many other artists' albums including:  
The Johnson Girls, Dan Milner, Rick Nestler, The NexTradition, WaterSign



photo: Clarice Kjerulff



photo:  
Howie Liefer



photo:  
Howie Liefer

# Folk Music Virtual and Real Events Calendar

Most of these events are not run by the Club, and information given is the best available at press time. You should check to confirm they are still running. Contact information is given in the first listing for virtual events, and on p. 11 for live events. Send information for listing to: listings (at) folkmusicny.org or Margaret Murray, 1684 W. First Street, #C6, Brooklyn, New York 11223. DEADLINE is the 12th of the preceding month. This Calendar is updated online when late-breaking information is available.

**Many live, in-person (F2F) events are also livestream (L/S)**

#=event run by the club \* =Club Member ++=multi-day festival

†=not a club event, but one we co-sponsor or co-list

**Updated as of 4/9/23.** Corrections after the printed copy have the date in **red bold**.

Some earlier listings may have been deleted to make room for the new ones.

## VIRTUAL EVENTS - REPEATING

32 Ave.A, 212-505-5610; 8-10pm;

Wednesdays: The Quiet Room:

www.maryosession.com

Facebook.com/jayandmollylive; 8pm

Alternate Sunday zoom sings from the Mermaid's Tavern in Boston: one

Sun., Ballads, & one Sun., Sea songs.  
http://crosscurrents.lynnnoel.com

A listing of Shanty sessions: https://  
www.bostonsongsessions.org/  
virtual-sessions

## VIRTUAL EVENTS - APRIL

- 4 Tu Peter Lehndorff with Sue Will: folkproject.org/  
streamingtuesdays; 7pm; free
- 11 Tu McNevin's Mudpuddle  
Campfire: Power Outage  
Reboot: folkproject.org/  
streamingtuesdays; 7pm; free
- 14 Fr Concetta Abbate, We'll Be Fine  
and Zisl Slepovitch: Free Music  
Fridays - Facebook Live; 6-  
7:30pm; folkartmuseum.org;
- 15 Sa† Archie Fisher concert  
(livestream from England),  
**CANCELED**
- 16 Su† Staten Island Hybrid Shanty  
Sing: 2pm; see pp 2-3
- 16 Su† John McCutcheon: Hammer  
Dulcimer! see p. 3
- 18 Tu Owen Walsh: folkproject.org/  
streamingtuesdays; 7pm; free
- 25 Tu David Berkeley: folkproject.org/  
streamingtuesdays; 7pm; free

## LIVE EVENTS - NYC - REPEATING

- Mondays†: Irish Trad. Music Session:  
Landmark Tavern; 8pm; see p. 2
- Wednesdays†: Sunnyside Folk Club:  
Sanger Hall, 8pm; see p. 2
- Thursdays: Mary O's Irish Music Session,

## LIVE EVENTS - NYC - APRIL

- ...
- 2 Su† Sea Chanteys & Maritime Music  
- hybrid; 2-4pm; see p. 2
- 7 Fr New York Arab Festival - Let's  
Dance Series: Nublu, 151  
Avenue C; 8pm; WMI
- 7 Fr Zlatne Uste Brass Band - dance  
teaching by Michael Ginsberg at  
8pm; dance party at 8:45pm;  
cash bar and Balkan food  
available for purchase by Mam  
Mam Ila: 213 E. 82nd St., NYC;  
646-831-8720; zlatneuste.org;  
fb.me/e/2BBhklFLm
- 8 Sa Mike Burns & Highway 54:  
Tavern Concerts; Historic  
Richmond town; 6-8pm
- 14 Fr Bassekou Kouyate & Ngoni Ba:  
Robert Browning Associates; 8p
- ++14-15 Dancing the Gods with  
Sreelakshnig Govardhanan (Fri.)  
and Praveen Kuma (Sat.): The  
Ailey Studios, 405 W. 55 St.;  
NYC; at 7pm both nights, Lee  
Demby Curator Rajiku Puri; WMI
- 15 Sa Harbortown: Tavern Concerts;  
Historic Richmond town; 6-8pm
- 15 Sa Ray Korona Song Night #5 with  
many perf's: Peoples Voice Cafe
- 15 Sa Sahha Matallebi (Persian):  
Robert Browning Associates; 8p
- 15 Sa Sam Robbins + Rachel Kilgour:  
Voices in the Heights; 7:30pm
- 16 Su Blue Plate Special:** Good  
Coffeehouse at The Little Victory  
Theater, 4089 Victory Blvd.,  
Staten Island 10314; 4-6pm;



*Calendar Listings, Live Events, continued from page 6*

- info: fbanjo@aol.com
- 20 Th Dakh Daughters with Balaklara Blues: le Poisson Rouge, 158 Bleecker St., NYC; 8pm
- 21 Fr **Flagstone:** New York Irish Center in Queens presented by Blarney Star; 7pm
- 22 Sa Kokokol: Public Records, 233 Butler St., Brooklyn; 8pm; WMI
- 22 Sa Save the Peoples Voice Cafe Concert with Mario Cancel-Bigay, Bev Grant, Charlie King, Carolann Solebello & Lindsey Wilson: Peoples Voice Cafe
- 29 Sa Fatoumata Diawara: Brooklyn Bowl, 61 Wythe Avenue, Brooklyn; 8pm; WMI
- 29 Sa<sup>+</sup> Steff Reed + Marie Mularczyk O'Connell\* & the Mountain Maidens: Peoples Voice; see p 3

**LIVE EVENTS - NYC - MAY**

*(repeating events before April listings)*

- 3 We ADG7 (AK Dan Guang Chil) - Counterpoint Series: le Poisson Rouge; 8pm; WMI
- 4 Th Omar Sosa & Seckou Keita - Suba Revisited: Robert Browning Assoc.; 8pm
- 6 Sa Ben Silver + Brie Kelly: Peoples Voices Cafe
- 7 Su<sup>+</sup> Sea Chanteys & Maritime Music: hybrid at the Seaport; 2-4pm; see p. 2
- 8pm; River Spirit Music at Facebook.com
- 1 Sa Samoa Wilson: Tompkins Corners Cultural Center; 7:30pm
- 5 & 6 Chris Murphy & Artie Norton: Turning Point; 7:30pm
- 7 Fr Kaia Kater: Caffe Lena; 8pm
- 7 Fr Josh Rouse: Turning Point; 8pm
- 8 Sa Sara Thomsen: Walkabout Clearwater Coffeehouse
- 13 Th Haneke Cassel Band with opener Carling and Will: Caffe Lena
- 14 Fr Quebecois Workshop with Nicolas Babineau & Alexis Chartrand: TCCC; 3:30pm
- 14 Fr Nicolas Babineau with Alexis Chartrand in concert: TCCC; 7:30pm
- 14 Fr Alice Howe & Freebo: the Folkus; 8pm
- 15 Sa<sup>+</sup> The Nordic Fiddlers Bloc - live and l/s: Old Songs; 7:30pm; see pp 2-3
- 15 Sa Dana Robinson:concert: Golden Link
- 16 Su Jake Blount, Nic Gareiss & Laurel Premo: Caffe Lena; 7pm
- 16 Su New York Folklore Presents Sounds and Dances of Latin America and the Caribbean: The Linda; 3-5pm
- 16 Su Toby Walker: Turning Point; 4pm
- 19 We Peter Case with guest Ben de la Cour: Turning Point; 7:30pm
- 20 Th Della Mae with opener Maya de Vitry: Caffe Lena; 7pm
- 21 Fr Arlo Guthrie - What's Left of Me, mod. by Bob Santelli; The Egg Center Empire State Plaza, Albany; 7:30pm; SOLD OUT; theegg.org
- 21 Fr House of Hamill: Caffe Lena; 8p
- 21 Fr Jay Ungar & Molly Mason: the Folkus

**LIVE EVENTS - LONG ISLAND - APRIL**

- 19 We Rachel Sage and Ari Wisnia: Hard Luck Cafe; 7pm; FMSH
- 26 We Sea Chanteys and Maritime Music with Stuart Markus: Afternoon T.E.A.; 2-3pm; Landmark on Main Street; free

**LIVE EVENTS - NEW YORK STATE - APRIL**

- 1 Sa Little Folks Show with Deb Cavanaugh and Dandelion Wine; Caffe Lena; 3-4pm; free
- 1 Sa Greg Greenway & Friends: Eighth Step
- 1 Sa Professor Louie and the Crowmatix: Turning Point; 8pm
- 1 Sa Lucy Wainwright Roche: Caffe Lena; 8pm
- 1 Sa Pat Wictor: Hastings on Hudson;
- 22 Sa<sup>+</sup> Nicolas Boulерice with Frederic Samson - Confine aux voyages - live and l/s: Old Songs; 7:30pm; see p. 3
- 22 Sa Folk Heritage Series - Cliff Eberhardt: Caffe Lena; 8pm
- 22 Sa Iain Matthews: Turning Point; 8pm
- 22 Sa Dan Navarro: The Depot at Argyle Brewing, 6 Broad St.,

*Calendar Listings, live events continued from previous page*

- Cambridge 12816; 8pm; 518-677-7377; facebook.com/Argyle Brewing/Cambridge
- 22 Sa Jill Sobule: Common Ground Community Concerts; 7:30pm
- 22 Sa Susan Werner: the Eighth Step; 7:30pm
- 23 Su Dan Berggren - An Earth Day Concert Celebrating 50 Years of Performing: Caffe Lena; 7pm
- 23 Su Steve Forbert: Turning Point; 4p
- 23 Su Garnet Rogers: the Grange at Whallonsburg; 4pm
- 27 Th Low Lilly - CD Release concert: the Ashokan Center; 7pm
- 27 Th Heather Maloney: Caffe Lena; 7pm
- 28 Fr Marc Berger and Ride: Turning Point; 8pm
- 28 Fr Melissa Ferrick: Caffe Lena; 8p
- 28 Fr Jonah Smith Band; also James Maddock: Towne Crier; 8:30pm
- 29 Sa HURT - A Mississippi Inspiration - Mark and Jill, Piedmont Bluz and more: Caffe Lena; 8-10pm
- 29 Sa<sup>†</sup> Rhythm Future Quartet:- live and l/s: Old Songs; 7:30pm; see p.4
- 30 Su Kalos: Caffe Lena; 7pm
- 30 Su James Maddock: Turning Point; 4pm
- 30 Su Suzanne Vega - an intimate evening of songs and stories: Emelin Theater

**LIVE EVENTS - MAY - NEW YORK STATE**

- 5 Fr Dirty Grass Players: Caffe Lena; 8pm
- 5 Fr Tempest: Towne Crier; 8:30pm
- 6 Sa Folk Talk Trio - Little Folks Series; Caffe Lena; 3-4:30pm
- 6 Sa Heard: Caffe Lena; 8pm
- 6 Sa<sup>†</sup> North Sea Gas - live and l/s: Old Songs; 7:30pm; see pp 3-4
- 6 Sa Vern Lindley Birthday Concert with many performers; reception to follow: Golden Link
- 6 Sa Le Vent du Nord: Towne Crier; 8:30pm
- 7 Su Dia de las Familias - celebrating Latin culture, food, music & arts with Radio Jarocho & The Noche Buena Band: Ashokan Center; 10am -3pm; free

- 7 Su The Sweet Lilies - Bright Series: Caffe Lena; 7pm

**LIVE EVENTS - NEW JERSEY - APRIL**

- 7 Fr Christine Lavin with opener Bill Hall: the Troubadour
- 8 Sa Joe Jencks: Hurdy Gurdy
- 21 Fr Andy Cohen with opener Jean Farnworth: the Troubadour
- 21 Fr Alan Reid: Princeton FMS
- 28 Fr E.T.E. (Quebecois) with opener Russ Rentler: the Troubadour
- 28 Fr Arlo Guthrie - What's Left of Me - A Conversation with Bob Santelli with video: Pollak Theater, MCA, 400 Cedar Ave., West Long Branch; 8pm; 732-263-6889; monmouth.edu/mca
- 29 Sa Larry Campbell & Teresa Williams plus Lucy Kaplansky: Outpost in the Burbs

**LIVE EVENTS - NEW JERSEY - MAY**

- 5 Fr Enrico Granafei & Kristine Massari with opener Frank & Hank: the Troubadour
- 5 Fr Warren Zanes - Finding Nebraska - joined by Louise Cantrell and James Maddock and presented by Outpost in the Burbs and Succeed Together's Montclair Literary Festival: Outpost in the Burbs; 7pm
- 6 Sa Abbie Gardner: Hurdy Gurdy

**LIVE EVENTS - CONNECTICUT - APRIL**

- 1 Sa Rani Arbo & daisy mayhem: Northwest Park Concert Series; 7pm; SOLD OUT
- 1 Sa Grass Routes: Vanilla Bean Cafe; 7pm
- 2 Su Rory Block plus Lisa Rich: Bread Box Theater; 4pm
- 7 Fr Caroline Cotter/Ben Cosgrove: Buttonwood Tree; 8pm
- 14 Fr Lost Bayou Ramblers - Cajun Dance Party at Milford Arts Council: East Rock Concert Series
- 15 Sa Tracy Grammer & Jim Henry: Vanilla Bean Cafe
- 15 Sa Grant Rogers: Sounding Board
- 15 Sa Marty Stuart and his Fabulous Superlatives: Ridgefield

*Calendar Listings, live events continued from previous page*

- 16 Su Playhouse; 8pm; SOLD OUT  
Atwater-Donnelly Trio plus Mad Agnes: Bread Box Theater; 4pm
- 21 Fr Dave Gunning (from Pictou, Nova Scotia): Salmon Brook Music Series; 7:30pm
- 21 Fr Kristen Graves: Friday Night Folk
- 22 Sa Hunter Skye/Still Rivers: Buttonwood Tree; 8pm
- 22 Sa Kate Taylor - an evening of music and conversation: Packing House; 7:30pm
- 28 Fr Meetinghouse: Meeting House Presents; 7pm
- 29 Sa Kala Farnham with Jenna Nicholls: Packing House; 7:30pm
- 29 Sa Porch Party Mamas: Northwest Park Concert Series
- 29 Sa Peter Mayer: this concert at CT Audubon, 218 Day Rd., Pomfret Ctr. 06259; 7pm; Vanilla Bean
- 29 Sa Oshima Brothers: Sounding Bd
- 29 Sa Don White: Buttonwood Tree; 8pm
- 30 Su John Gorka: East Rock Concert Series; 3pm

**LIVE EVENTS - CONNECTICUT - MAY**

- 5 Fr A Former Friend: Buttonwood Tree; 8pm
- 6 Sa Gil Gutierrez: Northwest Park Concert Series
- 6 Sa Amy Rigby: Packing House; 7:30pm

---

## *Folk Calendar Listings Info*

This list gives more detailed information for many locations listed in the chronological **LIVE** Events Listings. Corrections to this list are most welcome! Send info to: Don Wade, 35-41 72<sup>nd</sup> St, Jksn Hts, NY 11372 718-426-8555, Don(at)folkmusicny.org.

**AROUND TOWN** (5 boroughs of NYC)

Brooklyn Bowl, 61 Wythe Avenue, Brooklyn 8pm WMI  
CDNY dances at Church of the Village, 201 W. 13th St., NYC 7:30pm cdny.org  
Jalopy, 315 Columbia St., Brooklyn, 11231 718-395-3214 jalopytheatre.org/  
Landmark Tavern, 626 11th Avenue (on 46th St) co-sponsored with and led by Don Meade for info 212-247-2562 or <http://www.thelandmarktavern.org/events.php>  
le Poisson Rouge, 158 Bleecker St., NYC 8pm  
NY Irish Center, 10-40 Jackson Av, LIC (Queens) 718-442-8560: [newyorkirishcenter.org](http://newyorkirishcenter.org)  
Peoples' Voice Cafe (PVC) Sat 8PM at Judson Memorial Church, 239 Thompson St info: 212-787-3903, see ad page 10. [www.peoplesvoicecafe.org](http://www.peoplesvoicecafe.org) \$20  
Robert Browning Associates, various locations [robertbrowningassociates.com](http://robertbrowningassociates.com)  
Seaport South Street Seaport, 2-4pm see p. 2  
Sunnyside Folk Club Sanger Hall, 8pm sings Wednesdays-see page 2  
Tavern Concerts Historic Richmondtown: S. I. Historical Soc., 441 Clarke Ave, Staten Island 6 & 8 pm \$15 Free parking. 15-minute drive from all bridges to S. I. Bus S 74 from the Staten Island Ferry. Beer, wine and hot apple cider are available. Info: [historichrichmondtown.org](http://historichrichmondtown.org) or call 718 351-1611 x241 for information or to make reservations. (Dinner available next door at M. Bennett Refreshments, 718-983-6715)  
Voices in the Heights, First Unitarian Cong. Society, 119 Pierrepoint St, Brooklyn 7:30pm [www.voicesintheheights.org](http://www.voicesintheheights.org)  
WMI-World Music Institute: (usually 8pm ): [worldmusicinstitute.org](http://worldmusicinstitute.org) 212-545-7536

**LONG ISLAND**

FMSH (Hard Luck Cafe)=Huntington Folk Music Society § (PO Box 290, Huntington Station 11746) 1st Saturday Concerts at the Cong Ch of Huntington, 30 Washington Dr, Centerport also Hard Luck Cafe concerts on the 3<sup>rd</sup> Thursday at the Sky Room of the Cinema Arts Center, 423 Park Ave. <http://fmsch.org/>  
Landmark Community Center, 232 Main St, Port Washington 516-767-6444 8pm in Jeanne Rimsky Theater [www.LandmarkonMainStreet.org](http://www.LandmarkonMainStreet.org)

**UPSTATE NEW YORK**

Ashokan Center, 477 Beaverkill Rd., Olivebridge 845-657-8333 [ashokancenter.org](http://ashokancenter.org)  
Caffè Lena, 47 Phila St., Saratoga Springs 518-583-0022 [www.caffelena.org](http://www.caffelena.org)

*continued on next page*

*Listings Information continued from previous page*

Common Ground Community Concerts, South Prby Church, 343 B'way, Dobbs Ferry  
Eighth Step CH 8th Step at Proctors, 432 State St., Schenectady 518-434-1703  
Emelin Theater Library La, Mamaroneck, 8:30pm 914-698-0098 emelin.org  
Folkus concerts at May Memorial Unitarian Universalist Society, 3800 East Genesee St,  
Syracuse, N.Y. <http://www.folkus.org/> Box 197, DeWitt, NY  
Golden Link Folk Song Society (Rochester, NY Area): concerts at Rochester Christian  
Reformed Church, 2750 Atlantic Ave, Penfield, NY 14526, 7:30pm [goldenlink.org](http://goldenlink.org)  
Grange at Whallonsburg, 1610 NY Rte 22, Essex, NY 12936 518-963-7777 [https://  
www.thegrangehall.info/](https://www.thegrangehall.info/)  
The Linda, 339 Central Ave., Albany 12206 8pm 518-465-5233  
Old Songs, Inc, PO Box 466, 37 South Main St, Voorheesville 12186 518-765-2815  
[www.oldsongs.org](http://www.oldsongs.org)  
River Spirit Music house concerts, 5pm in Hastings-on Hudson (potluck at 4pm) [http://  
www.riverspiritmusic.com/houseconcerts](http://www.riverspiritmusic.com/houseconcerts) (347)MUSIC-76  
TCCC =Tompkins Corners Cultural Center, 729 Peekskill Hollow Road. Putnam Valley,  
NY. Donation \$15 [tompkinscorners.org](http://tompkinscorners.org) 845-528-7280.  
Towne Crier Cafe, 379 Main St, Beacon, 845-855-1300 [www.townecrier.com](http://www.townecrier.com) 6:30pm  
Turning Point, 468 Piermont Ave., Piermont, Rockland County ( south of Nyack) (845)  
359-1089 food avail [www.piermont-ny.com/turning](http://www.piermont-ny.com/turning)  
Walkabout Clearwater Coffeehouse 7:30PM, CUUC, 468 Rosedale Ave., White Plains  
914-242-0374 <http://walkaboutchorus.org/music/coffeehouse.php> 2<sup>nd</sup> Sat

**NEW JERSEY**

Folk Project: §, POB 41, Mendham 07945 973-335-9489 <http://folkproject.org>  
Hurdy Gurdy Folk Music C'hse: Fairlawn Community Center, 10-10 Kipp St, Fairlawn  
info: 201-384-1325, 1st Sat, 8pm, § [hurdygurdyfolk.org](http://hurdygurdyfolk.org).  
Outpost in the "Burbs" Coffeehouse The Unitarian Church of Montclair or the Montclair  
H. S. Auditorium twice monthly 8:30pm 973-744-6560 [outpostintheburbs.org](http://outpostintheburbs.org)  
Princeton Folk Music Soc. § usually cnerts 3rd Fri. at Christ Cong. Church, 55 Walnut  
Lane, Princeton \$20 (\$15 NYPFMC members) [www.princetonfolk.org](http://www.princetonfolk.org)  
Troubadour Coffeehouse Fri, 7:45pm, \$7 (2nd Fri, open stage) Morristown Unitarian  
Fellowship, 21 Normandy Heights Rd, Morristown, NJ. (Run by Folk Project,  
[www.folkproject.org](http://www.folkproject.org) Sat concert info: 973-335-9489

**CONNECTICUT**

Bread Box, St. Paul's Episcopal Church 220 Valley St. Willimantic CT, 7:30 pm.  
Reservations, 860-429-4220 Open mic third Wednesday usually \$10 adm  
Buttonwood Tree, 605 Main St., Middletown 860-347-4957 [www.buttonwood.org](http://www.buttonwood.org)  
East Rock Cnert Series, 285 Nicoll St, New Haven [mactivity.com](http://mactivity.com)  
[fernandopintopresents.com](http://fernandopintopresents.com)  
Friday Night Folk Cfehse, All Souls Universalist Unitarian Congregation, 19 Jay St., New  
London 860-443-0316 [www.fridaynightfolk.org](http://www.fridaynightfolk.org)  
GuitartownCT Productions Cafe Amici, 1640 Whitney Ave., Hamden 203-430-4060 or  
[www.guitartownct.com](http://www.guitartownct.com)  
Meeting House Presents Concert Series Unitarian Soc. of Hartford [ushartford.com](http://ushartford.com) 8pm  
Northwest Park Concert Series, Northwest Park Nature Center, 145 Lang Road, Windsor,  
CT, 860-285-1886 7:30pm <http://www.northwestpark.org>  
Packing House, 156 River Rd., Willington 518-791-9474 <http://thepackinghouse.us>  
Ridgefield Playhouse. 80 East Ridge, Ridgefield, 203-438-5795 [.ridgefieldplayhouse.org](http://ridgefieldplayhouse.org)  
Salmon Brook Music Series, Salmon Brook Music Series, South Congregational Church  
Hall, 242 Salmon Brook St, Granby 06035, 860-916-5066 7:30pm, \$18  
Shamrock Traditional Irish Music Soc. 7:30pm Gaelic-Amer. Club, 74 Beach Rd,  
Fairfield  
Sounding Board C.H., Universalist Church of West Hartford, 433 Fern St., West Hartford  
CT Sat's, 8pm, \$10, <https://thesoundingboard.org/>  
Vanilla Bean Café, corner of 44, 169 & 97, Pomfret 8pm Sat eve's plus first Fri open  
mike, 860-928-1562 [www.thevanillabeancafe.com](http://www.thevanillabeancafe.com) \$5-15  
Voices Cafe Unitarian Church in Westport, 10 Lyons Plains Rd., Westport, CT 06880,  
203-227-7205 8pm \$25

# Folk Music Society of NY, Inc Information

NEWSLETTER INFO. (ISSN 10414150)

The Folk Music Society of New York, Inc./NY Pinewoods Folk Music Club was started in 1965 and is a 501(c)(3) non-profit, educational corporation an affiliate of the Country Dance & Song Society of America and a member of the Folk Alliance. Our annual report is available from our office, 444 W. 54 St, #7, NYC, NY 10019 or from the Office of Charities Registration, N.Y. Dept. of State, 162 Washington Av, Albany, NY 12232. We have approximately 200 members and run concerts, week-ends, classes, and get-togethers, all with an emphasis on traditional music. The Society is run entirely by volunteers with a Board of Directors elected by the membership. The working officers below (members of and elected by the board) welcome your help and suggestions.

Memberships are listed on the back page regular memberships help support the society and include one newsletter subscription (11 issues yearly) and reduced admissions. Won't you join us?

**2023 Board of Directors:**

**Membership & Treasurer:** Heather Wood, 444 W. 54th St, #7, NYC, NY 10019 646-628-4604

<membership(at)folkmusicny.org>  
<treasurer(at)folkmusicny.org>

**Program:** Heather Wood, 444 W. 54th St, #7, NYC, NY 10019 646-628-4604  
<program(at)folkmusicny.org>

**Education Chair:** Marie Mularczyk, 52-07 Leith Place, Little Neck, NY 11362 718-819-8009  
mmularczyk(at)nyc.rr.com,

**Social Chair:** Betsy Mayer, 318 E. 90th St. #3W, NYC, NY 10128 646-599-6747  
<betsylmayer(at)gmail.com>

**President:** Clarice Kjerulff, 34-13 87th Street, Jackson Heights, NY 11372 718-429-3437  
<president(at)folkmusicny.org>

**Vice-President:** Rosalie Friend, 718-965-4074  
<vicepres(at)folkmusicny.org>

**Publicity:** Lynn Cole with Rosalie Friend  
Lynn, 83-10 35 Av, #2W, Jackson Hts, NY 11372 919-308-9526  
<publicity(at)folkmusicny.org>

**Newsletter:** Eileen Pentel, 35-41 72nd St., Jackson Heights, NY 11372 718-672-6399  
<newsletter(at)folkmusicny.org>

**Scholarship Coordinator:** Heather Wood, 444 W. 54th St, #7, NYC, NY 10019 646-628-4604 <treasurer(at)folkmusicny.org>

**Corporate & Recording Secretary:** Rosalie Friend, 718-965-4074  
vicepres(at)folkmusicny.org

**Other Board Members:** Lafayette Matthews, Margaret Murray, Linnea Paton, Jules Peiperl, Marilyn Suffet Steve Suffet Don Wade



---

**Weekend Coordinator:** Joy C. Bennett  
**TradMaD Camp co-Directors:** Joy C. Bennett and Heather Wood

**Reciprocal Arrangements:** The Society has reciprocal members' admission agreements with CD\*NY, Princeton FMS, The Folk Project (NJ), and, LITMA

**Publisher:** Folk Music Society of N.Y., Inc., 444 W. 54 St., #7, NYC, NY 10019. © 2021

**DEADLINE:** the 12<sup>th</sup> of the month prior to publication.

Send address changes to the database geru: Don Wade, 35-41 72 St, Jackson Heights, NY 11372 membership(at)folkmusicny.org

**Editor:** Eileen Pentel, 35-41 72<sup>nd</sup> St, Jackson Hts, NY 11372 718-672-6399. <newsletter(at)folkmusicny.org> *Send all Hotlines & ads (with check made out to FMSNY) and all correspondence & articles ONLY to this address.*

Send calendar or listings info directly to the appropriate person below (no charge for listing):

**Events Calendar:** Margaret Murray, 1684 W. First Street, #C6, Brooklyn, NY 11223.  
<listings(at)folkmusicny.org>

**Locations:** Don Wade, 35-41 72 St, Jcksn Hts, NY 11372 <Don(at)folkmusicny.org>

**Calligraphy Headings:** Anthony Bloch  
**Front Cover Heading:** Patricia Greene  
**Layout Program:** Scribus 1.5.4

**Printer's Devil and Layout:**  
Don Wade <Don(at)folkmusicny.org>

**Other Staff:** Lynn Cole, Ruth Lipman, Judy Polish

All members are encouraged to submit articles on folk music & related subjects, and book, concert, and record reviews. Preferably **submit articles and ads via E-mail to Don(at)folkmusicny.org.** (PDF, ASCII, .txt, .odt, .doc, or .docx format) or else type them. Please be sure to include your day & evening phone numbers and keep a copy.

Newsletters are sent by first class mail or on-line to members on or about the first of each month (except August). Views expressed in signed articles and ads represent those of the author and not necessarily those of the society.

**Newsletter Display Ad Rates**  
(our Federal ID number is 13-346848):  
Full Page \$120 Size: 4-5/8 W x 7-3/4 H  
1/2 Page \$60 Size: 4-5/8 W x 3-3/4 H  
1/4 Page \$30 Size: 2-1/4 W x 3-3/4 H  
1/8 Page \$15 Size: 2-1/4 W x 1-3/4 H  
(less 10% for repeating ads paid in advance)

Sizes are actual print size for camera-ready copy and will be reduced if oversize. Preferably **ads should be supplied via e-mail**, in JPG, TIF, PCX, BMP, or WMF format or laid out camera-ready delivered, and paid before the deadline (textual ads should be in ODT, DOC, or DOCX). The Editor has no facilities for doing art work and ads which are sloppily laid out will be refused! Ads are subject to the approval of the newsletter committee. Page or position placement cannot be guaranteed.

**website:** www.folkmusicny.org

**facebook:** https://www.facebook.com/FMSNY/

**Twitter:** www.twitter.com/FolkMusicNY

**E-Mail:** <info (at) folkmusicny.org> (but it is best to send to individual officers as listed above).

**Picture Scrapbook & newsletter archives:**  
www.folkmusicny.org/Scrapbook/Scrapbook.html

**What's up with (at)?** To prevent harvesting of e-mail addresses, we replace @ with (at).



**Mark S. Hamburgh**  
Attorney at Law

Longtime Pinewoods member

- Wills, Trusts, Estate Planning
- Probate & Estate Administration
- Elder Law - Powers of Attorney, Medicaid, Guardianships
- Sales and purchases of real estate, coops and condos

450 Seventh Avenue, Suite 1308  
(34<sup>th</sup> and 35<sup>th</sup> Streets)

New York, NY 10123-1308

tel: 212-947-0565; fax: 212-629-5825

mark@markhamburghlaw.com

www.markhamburghlaw.com

www.linkedin.com/in/markhamburgh

Attorney Advertising

**PEOPLES' VOICE**



**Peoples' Voice Cafe**  
at the Judson Memorial Church  
Assembly Hall

239 Thompson St. • New York NY 10012

In-person & on-line, see website.  
Saturday at 8:00 PM. Doors open 7:15 PM  
Masks required. Vaccination and/or  
negative covid test strongly recommended.

April 1: *Pete & Woody*. Multimedia  
presentation with live music

April 8: Closed for Easter Weekend

April 15: Ray Corona Song Night

April 22: PVC Fundraising Concert

April 29: Steff Reed + Marie Mularczyk  
O'Connell & the Mountain Maidens

May 6: Ben Silver + Brie Kelly

Suggested donation: \$20

PVC subscribers, students, youth: \$12

FMSNY or Judson members: \$12.

More if you choose, less if you can't.

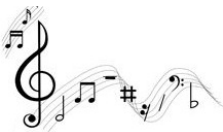
No one turned away for lack of money.

212-787-3903 [www.peoplesvoicecafe.org](http://www.peoplesvoicecafe.org)

**TradMaD Camp**  
**Aug. 26 - Sept. 1**

Registration is now  
open for TradMaD  
Camp at Pinewoods  
Camp (F2F  
in Plymouth, Mass)

**Register now! [http://  
tradmadcamp.org/](http://tradmadcamp.org/)**



**FMSNY T-Shirts!**

The Folk Music Society of New York, Inc.  
now has an online store!



[https://www.bonfire.com/store/  
folk-music-society-of-new-york/](https://www.bonfire.com/store/folk-music-society-of-new-york/)

**PRENEWAL**

Your membership expiration date is printed on your newsletter mailing label. If you send in your renewal before it expires, you will save wear and tear on our Membership Chair, and also save the club the cost of mailing you a reminder. Address to send to is on the back cover membership blank.

Thank you.

**The Society's Web Page: <http://fmsny.org>**

# Pinewood's Hotline

Notices 40 words or less RATES: \$10 each Hotline per month (\$5 for members), 1/2 year for \$25 (\$15 for members), one year \$50 (\$25 members). Members please include mailing label or ID number for discount. (Lost & Found ads are free.)

Send all ads to: Eileen Pentel, 35-41 72<sup>nd</sup> St, Jackson Heights, NY 11372. We will be happy to accept text by E-mail with the text as part of the message (coincident with mailing your check) to Don(at)folkmusicny.org. All must be prepaid, make checks to: Folk Music Society of NY, Inc. (FMSNY). [Last run date is in brackets.]

**Sound reinforcement:** Your program deserves the best, whether it's a concert or a large festival. Location recording: Direct to stereo or Digital multi-track recording and editing. Acoustic Folk and Classical are specialties. Don Wade, Collegium Sound 718-426-8555 Don(at)collegiumsound.com. [1-24]

**Minstrel Records:** Bob Coltman, David Jones, Jack Langstaff, Almeda Riddle, Frank Warner, Jeff Warner & Jeff Davis, Jerry Epstein, Dwayne Thorpe, Sonja Savig. On LP, newer releases on CD. www.minstrelrecords.com or Minstrel Records, 35-41 72 St, Jackson Hts, NY 11372, 718-426-8555. [1-24]

**Come do English and American country dancing** with Country Dance\*NY!  
see: www.cdny.org for info.

**Entertainment/Arts Attorney**—Making a record? Publishing your book? Collaborating on a score, play, film? Licensing copyrights? Registering Trademark? Forming LLC or incorporating non-profit? I negotiate fair agreements, draft readable contracts, file forms, mediate disputes. Law Office of Leslie Berman, P.C., 631-675-1139, leslie(at)lesliebermanlawfirm.com. *Attorney Advertising.* [3-24]

**I'm looking to donate the following folk music books** to those who would enjoy using them:

- the sheet music to "Blowin' In the Wind", with wonderful photos of Peter, Paul and Mary on the cover of the sheet music.

- a vocal selections book called *Peter, Paul and Mary On Tour*, with a cute picture of them on the cover. There are eight songs in that book.

-*Heritage Songster: 320 Folk and Familiar Songs*. This is a very large paperback book. The copyright date is 1966.

- *The Joni Mitchell Songbook: Complete Volume Number Two*. This is also a large paperback book with many songs.

- *The Judy Collins Songbook*. Lots of her wonderful songs and the copyright date of 1969. This is also a somewhat large paperback book.

Take all or some...but you'll need to come get it from me in Jackson Heights, Queens. If interested, please email me (Toni Scofield): dodatoni@yahoo.com.

Please put in the Subject line: "Interested in the folk music you're giving away." [4/23]

If you are the proud parent of one of the hotlines, please check the ending date. Send in your renewal before the 12<sup>th</sup> of the preceding month to have it continue.

---

## Web Helpers Wanted

We need help in maintaining a presence on various web sites and/or posting concerts. If you can help, contact Don(at)folkmusicny.org, 718-672-6399.

**TradAD Camp**  
 Sat, Aug. 26 - Sept. 1  
 Register now!  
<http://tradadcamp.org>

Folk Music Society of N.Y., Inc.  
 NY Pinewoods Folk Music Club  
 444 W. 54 St. #7  
 New York, NY 10019  
[www.folkmusicny.org](http://www.folkmusicny.org)



**FIRST CLASS MAIL**

**Membership Form - JOIN US!**

(For a sample newsletter, write to the Membership secretary—address below.)  
 To join (or to renew) and receive the newsletter regularly, you may join online at <http://fmsny.eventbrite.com> or mail this to:

**FMS membership, Heather Wood,  
 444 W. 54th St, #7, NYC, NY 10019;  
 membership(at)folkmusicny.org.**

**MAKE ALL CHECKS PAYABLE TO: FMSNY**  
 (Folk Music Society of New York, Inc.)

**Yearly Dues**

\$38 individual;  \$55 family/dual;  
 low income/full-time student:  
 \$25 individual;  \$30 family  
 (low income is a hardship category for those who can't otherwise afford to join).  
 (please state reason: \_\_\_\_\_)

**Two Year dues:**

\$70 individual;  \$100 family/dual  
**Lifetime:**  \$700 ind.;  \$1000 family/dual  
 Memberships above include newsletter and reduced admission to concerts & most events.

**Long Distance Membership** (more than 50 miles from midtown Manhattan):

Yearly:  \$30 Individual;  \$48 family/dual  
 Includes newsletter, weekend discounts, and voting privileges.

- I wish to be a supporting member, my check includes an additional \$ \_\_\_\_\_ over regular dues. (Additional contributions are tax deductible, as permitted by law.)
- renewal (exp month: \_\_\_\_\_)
- new (How did you first hear about us? \_\_\_\_\_)

Send the newsletter  online,  mail,  both

Name(s)-if not printed at left: \_\_\_\_\_

Address: \_\_\_\_\_

City: \_\_\_\_\_

State: \_\_\_\_\_ ZIP \_\_\_\_\_

Telephone (\_\_\_\_\_) \_\_\_\_\_

E-Mail: \_\_\_\_\_

Family memberships: please list the names of others in the same household not listed above adults: \_\_\_\_\_

children: \_\_\_\_\_

I want to help:  with the newsletter;  I can help with \_\_\_\_\_