



New York Pinewoods Folk Music Club

June 2005


**NEWSLETTER**


vol 40, No.6

**June***NYPFMC Events at a Glance*

- 7 Tue Sea Music Concert: **Mick Moloney + NY Packet**; 6pm, South Street Seaport Melville Gallery
- 13 Mon **NYPFMC Exec. Board Meeting** 7:15pm at the club office, 450 7th Ave, #972D (34-35 St), info 1-718-575-1906
- 14 Tue Sea Music Concert: **The NexTradition + NY Packet**; 6pm
- 16 Thur **Sara Grey & Kieron Means**; house concert; 7:30pm
- 18 Sat **Chantey Sing** at Seamen's Church Institute, 8pm  
Note Corrected Date (*not* June 11)
- 19 Sun **Sacred Harp Singing** at St. Bart's, Manhattan; 2:30 pm
- 21 Tue Sea Music Concert: **Rick Spencer & Marc Bernier+NY Packet**; 6pm, South Street Seaport Melville Gallery
- 23 Thur **Riverdale Sing**, 7:30-10pm, Riverdale Prsby. Church, Bronx
- 28 Tue Sea Music Concert: **Stout Extra Strength + NY Packet**; 6pm; South Street Seaport Melville Gallery

**July**

- 2 Sat **Keep Cool Riverdale Sing Party**, Yonkers 6pm
- 5 Tue Sea Music Concert: **Jan Christensen + NY Packet**; 6pm South Street Seaport Melville Gallery
- 6 Wed **Folk Open Sing**; Ethical Culture Soc., Brooklyn, 7pm
- 7 Thur **July/August Newsletter Mailing**; at Club office, 450 7<sup>th</sup> Ave, #972, 7 pm
- 11 Mon **NYPFMC Exec. Board Meeting** 7:15pm at the club office, 450 7th Ave, #972D (34-35 St), info 1-718-575-1906
- 12 Tue Sea Music Concert: **David Kincaid + NY Packet**; 6pm
- 16 Sat **Sing and Swim Party at the Cohen's**, Jamaica, Queens
- 16 Sat **Chantey Sing** at Seamen's Church Institute, 8pm
- 17 Sun **Sacred Harp Singing** at St. Bart's, Manhattan; 2:30 pm
- 19 Tue Sea Music Concert: **Dick & Carol Holdstock + NY Packet**; 6pm, South Street Seaport Melville Gallery
- 26 Tue Sea Music: **Don Sineti with Steve Roys + NY Packet**

**Details Inside; table of contents, page 3**

# Events Details

**SEA MUSIC CONCERTS;** Tuesdays, 6-8 pm

Tuesdays through July, members of The New York Packet (Frank Woerner, Bonnie Milner, Deirdre Murtha, Mark Maniak, Joy Bennett, Alison Kelley, Maggie Bye, Frank Hendricks, David Jones, Jan Christensen, Dan Milner & Bob Conroy) join featured guests. Co-sponsored with the South Street Seaport Museum. At the Museum's Melville Gallery, 209 Water Street, between Fulton & Beekman. Call 1-212-691-7610 for directions. Latest details at <http://pages.prodigy.net/folkmusic/thenewyorkpacket.htm> Donation is \$5 (children, \$2), pay at the door.

**June 7 - Mick Moloney.** Master musician (banjo, guitar, mandolin), renowned singer and NYU Distinguished Professor, Mick Moloney will sing and talk about Irish immigration to the United States, Irish maritime songs, etc.

**June 14 - The NexTradition.** Ken Schatz of The Cartoon Network's Sheep in the Big City and Alison Kelley-Kraan of the Johnson Girls make great music together, a panorama of American history from plantations, railroad gangs and clipper ships.

**June 21 - Rick Spencer & Marc Bernier.** Chanteymen from Mystic Seaport, Rick and Marc bring a wealth of traditional and contemporary maritime song with them (guitars, fife, mandolin).

**June 28 - Stout Extra Strength.** Back by popular demand. Stout, New York's longest-singing maritime music group has evolved into a string band accompanying themselves with banjo, mandolin, fiddle, bass and guitars. Another "don't miss" concert.

**July 5 - Jan Christensen.** A member of Pete Seeger's Sloop Singers, Jan is a consummate maritime singer with a repertoire stretching from the Caribbean to his native Hudson River Valley... with 12-string guitar and many friends.

**FOLK OPEN SING;** Wednesdays, June 1<sup>st</sup>, July 6<sup>th</sup>; 6:30-10 pm

Join us on the first Wednesday of each month for an open sing. Bring your voice, instruments, friends, neighbors, and children. Drop by for a couple of songs or the whole evening. At the Ethical Culture Society, 53 Prospect Park West (basement), Brooklyn (near 2nd St.). Directions: F train to 7th Ave.; Q train to 7th Ave.; 2/3 train to Grand Army Plaza. Hosted by Ethical Culture/Good Coffeehouse, Pinewoods Folk Music Club, Alison Kelley, and Frank Woerner. For info: Alison Kelley, 1-718-636-6341.

**SARA GREY & KIERON MEANS;** Thursday, June 16, 7:30 pm .

Sara Grey has been a respected performer of traditional music -- American, Canadian, English and Scottish -- for more than 40 years. Sara accompanies herself by frailing a five string banjo in the old-time clawhammer style and sings fine unaccompanied material as well. She always provides lots of choruses, so come prepared to sing. She has a very widespread repertoire, much of it direct from sources, including many songs that are otherwise unknown. As well as singing and playing, Sara is well known for her uproarious tale telling - specializing in stories from New England where she grew up, learning many stories from her father. Sara grew up in New Hampshire but has lived in North Carolina, Ohio, Montana, New York, Pennsylvania, Arizona, Wales, Scotland and England. As a youngster in North Carolina she developed a love for old time songs and banjo music, and she cites Kyle Creed as the chief influence on her understated, syncopated clawhammer banjo style.



Sara will be performing with her son, Kieron Means. Kieron has a strong voice and the ability to really move the listener.. His guitar playing is interesting, unconventional, and highly effective on material from old-time blues to England and Scotland.

At Westbeth Community Room, Bethune & Washington Streets, Manhattan. Directions: 1,2,3, or 9 train to 14th Street, exit at downtown end of station (12th St.). Walk West on

*NYPFMC Events Details - Continued from previous page*

12th St. to Hudson St., turn left, one block to Bethune, turn right, pass Greenwich and Washington Sts. You are now in the last block of Bethune. Walk past the main entrance to the building to a wide entrance to a courtyard. Top of steps, go right into small courtyard, then left, Community Room is on the right. Or: A train to 14th St. Walk south (8th Ave. will turn into Hudson St.) to Bethune, turn right on Bethune and proceed as above. \$10 members, \$13 general public, residents of Westbeth are free. Further info: Jerry Epstein, (718)429-3437.

**CHANTEY SING**; Saturday, June 18<sup>th</sup>, 8 PM  
Note Corrected Date (*not* June 11)

Come to the Chantey Sing at South St Seaport. Bring instruments, voices and songs. Co-sponsored and hosted by the Seamen’s Church Institute at 241 Water St NYC. Directions A,C trains Broadway/Nassau St., and J.M.Z, 2,3,4,5, Fulton St. Walk down Fulton St and make a left on Water St. A small donation is requested. For Information call 1-718-788-7563.

**SACRED HARPSINGING AT ST. BART’S**; Sunday, June 19<sup>th</sup> ; 2:30pm

Co-sponsored and hosted by St. Bartholomew’s Church in Manhattan, on the 3rd Sunday of each month Sept. thru June, 2:30 to 5pm, 109 East 50th St. We continue the colonial American tradition of four-part, unaccompanied gospel singing. Beginners welcome! Books available for loan or purchase. Contributions collected; free parking available. Food and fellowship following. Info: Gail Harper 1-212-750-8977.

**RIVERDALE SING**; Thursday, June 23<sup>rd</sup>; 7:30-10 pm

Bring instruments, voices, and songs to share. In the Bronx at the Riverdale Presbyterian Church, 4765 Henry Hudson Parkway (bet. 246-249 Streets, west side of pkwy). Go down the driveway to the double red doors off the parking area. The sing is in the auditorium. On site parking for the first 18 cars. Donation is \$3. Info: 1-718-549-1344 after 11 AM..

**RIVERDALE SING KEEP COOL PARTY**; Saturday, July 2, 6pm

Join us in Yonkers for a pot luck dinner and music party at the home of Marc Beneteau and Rebekah Mulhare, 134 Shonnard Terr. in Yonkers. The pot luck is at 6:00 PM and then we’ll have music starting at 7:00 PM. Bring something to eat or drink, plus instruments and voices. The house is one block away from the Bee-Line #1 bus (which can be taken from the #1 or #9 train at 242nd St.) and 10 minutes from the Glenwood Station on Metro North. For travel directions or information call Marc at (914) 376-4956.

**NEWSLETTER MAILING**; Thursday July 7<sup>th</sup>; 7 PM

We need your help to mail out the next Newsletter. Join the important band of volunteers that sticks the stamps and labels and staples the pages to mail out this newsletter. At the Club office, 450 7th Ave. (between 34 & 35 St.), rm 972. Info: 1-718-426-8555.

---

**Table of Contents**

Club Events Details .....	2-3	-NYC .....	12
NYPFMC Club Info .....	4	- LI .....	14
Topical Listing of Club Events ....	5	- Upstate & NJ .....	15
Folk Process .....	6	-CT & PA .....	16
30 Years Ago .....	6	Calendar Location Info .....	17
Fall Weekend Coupon .....	7	Festival Listings .....	19
Tom Gibney Obit .....	8	Folk Music Week at Pinewoods ..	27
Cyril Tawney Obit .....	8	Planting Fields .....	28
From The Editor .....	9	Labor Chorus & Falcon Ridge ...	29
Help Wanted .....	9	Housing Wanted .....	30
Keep Cool Party Ad .....	9	Woody Guthrie Birthday Bash ....	30
Weekend Help Wanted .....	10	Triboro .....	30
Calendar Listings .....	10	Pinewoods Hot Line .....	31
Repeating Events		Membership Application .....	32

# New York Pinewoods Folk Music Club

The Folk Music Society of New York, Inc./NY Pinewoods Folk Music Club was started in 1965 and is a 501(c)(3) non-profit, educational corporation; an affiliate of the Country Dance & Song Society of America, a member of the Folk Alliance and a member of the NY-NJ Trail Conference. A copy of our annual report is available from our office at 450 7th Ave, #972D, NYC, NY 10123, or from the Office of Charities Registration, N.Y. Dept. of State, 162 Washington Av, Albany, NY 12232.

We have approximately 600 members and run concerts, week-ends, classes, and get-togethers, all with an emphasis on traditional music. The Society is run by all volunteers with a Board of Directors, elected by the membership. The working officers below (members of and elected by the board) welcome your help and suggestions.

Membership fees are listed on the back of this newsletter. Regular memberships include one subscription to the newsletter (10 issues yearly), free admission to our approximately 5 series events, and reduced admission to many events. Won't you join us?

## 2005 Board of Directors:

**Membership:** Anne Price, 80 Knolls Cresc, #2M, Bronx, NY 10463; 1-718-543-4971 <aeprice@aol.com>. [Membership coupon on the back cover.]

**Circulation** (all address changes): Mailing List, Folk Music Society of NY, 450 7th Ave, #972D, NYC, NY 10123

**Program:** David Kleiman, 245 W. 75 St, #1G, NY, NY 10023; 1-212-721-9382; <david.kleiman@heritagemuse.com>

**Education:** Alan Friend, 1-718-965-4074 <a.friend@mindspring.com>

## Social Chair: [vacant]

**President:** Joy C. Bennett, 111-39 76 Road, Forest Hills, NY 11375; 1-718-575-1906. <joybennett@att.net>

**Vice-President:** Evy Mayer 1-718-549-1344

**Finance Comm Chair:** Jerry Epstein, 34-13 87th St, Jackson Hts, NY 11372; 1-718-429-3437

**Treasurer:** Heather Wood, 444 W. 54 St, #7, New York, NY 10019; 1-212-957-8386, <hwood50@aol.com>

**Publicity:** Kate Myslinski, 245 W. 75 St, #1G, NY, NY 10023; 1-212-600-1096, FAX: 1-212-706-0590 <kate@sheridanstreet.net>.

**Newsletter:** Eileen Pentel, 35-41 72nd St., Jackson Heights, NY 11372; 1-718-672-6399

**Volunteer Coordinator:** [vacant]

**Corporate Secretary:** Eileen Pentel

**Weekend Coordinator:** Joy C. Bennett

**Other Board Members:** Steve Suffet, Marilyn Suffet, Don Wade

---

## FOLK FONE, 1-212-563-4099

A recording of folk events in NYC (changed weekly). Send last minute listings to: Folk Fone, Folk Music Society, 450 7th Ave, #972D, NYC, NY 10123 (Don Wade plus your name here)

## NEWSLETTER INFORMATION (ISSN 1041-4150)

**DEADLINE:** the 12th of the month prior to publication (no Dec. or Aug. issue). Space reservations should be in by the 10th of the month.

**Publisher:** Folk Music Society of N.Y., Inc., 450 7th Ave, #972D, NYC, NY 10123; 212-563-4099.

**Editor:** Eileen Pentel, 35-41 72 St, Jackson Hts, NY 11372; 1-718-426-8555. Send all *Hotlines & ads* (with check made out to FMSNY) and all *correspondence & articles ONLY* to this address.

Change of address to Circulation (address at left)

Send calendar or listings info directly to the appropriate person below (no charge for listing):

**Events Calendar:** Lenore Greenberg 120 Boerum Place, #1J, Brooklyn, NY 11201; 1-718-403-0347; <lenoreg@nyc.rr.com>

**Radio & Location Listings:** Don Wade, 35-41 72 St, Jcksn Hts, NY 11372; <WadeD@ncc.edu>

**Festival Listings:** John Mazza, 50 Plum Tree Lane, Trumbull, CT 06611 <jmazza@snet.net>

**Calligraphy/Logo Design:** Anthony Bloch

**Front Cover heading:** Patricia Greene

**Flyers:** Evy Mayer, Steve Suffet, Heather Wood

**Computer-aided Layout:** Don Wade

**Other Staff:** Harvey Binder, Isabel Goldstein, Ruth Lipman, Judy Polish, Sol Weber.

All members are encouraged to submit articles on folk music & related subjects, and book, concert, and record reviews. Preferably **submit articles and ads on disk, CD ROM or via E-mail to WadeD@ncc.edu**. (Pagemaker 6, ASCII or MS-Word format; MAC ASCII format) or else type them. Send articles to the editor; be sure to include your day & evening phone numbers and keep a copy.

Newsletters are sent by first class mail to members on or about the first of each month (except August & December). Views expressed in signed articles represent those of the author and not necessarily those of the club.

Newsletter Display Ad Rates (our Federal ID number is 13-346848):

Full Page \$100; Size: 4-5/8 W x 7-3/4 H

1/2 Page \$50; Size: 4-5/8 W x 3-3/4 H

1/4 Page \$25; Size: 2-1/4 W x 3-3/4 H

1/8 Page \$13; Size: 2-1/4 W x 1-3/4 H

(less 10% for repeating ads paid in advance)

Sizes are actual print size for camera-ready copy and will be reduced if oversize. Photographs print poorly unless supplied as a velox to the same size. Preferably **ads should be supplied on disk**, in MS Word, Pagemaker 6, TIF, PCX, BMP, or WMF format or laid out camera-ready; delivered, and paid before the deadline. The Editor has no facilities for setting type or doing art work and ads which are sloppily laid out will be refused! Ads are subject to the approval of the Advertising Committee. Page or position placement cannot be guaranteed.

---

**www.folkmusicny.org**

E-Mail: nypinewood@aol.com (but it is best to send to individual officers as listed on the left).

# Topical Listing of Club Events

## South Street Seaport Sea Music Concerts

Tuesdays in June and July; 6-8pm

Co-sponsored with South St. Seaport Museum. In the Melville Gallery, 209 Water St.

- Tue, June 7 **Mick Moloney + NY Packet**  
Tue, June 14: **The NexTradition + NY Packet**  
Tue, June 21: **Rick Spencer & Marc Bernier + NY Packet**  
Tue, June 28: **Stout Extra Strength + NY Packet**  
Tue, July 5: **Jan Christensen + NY Packet**  
Tue, July 12: **David Kincaid + NY Packet**  
Tue, July 19: **Dick & Carol Holdstock + NY Packet**  
Tue, July 26: **Don Sineti with Steve Roys + NY Packet**

### Series Concerts - Free to Members ☺

Fri, Nov. 4: Brian Peters at the Community Church

### House Concerts

- Thur, June 16: **Sara Grey & Kieron Means; 7:30pm at Westbeth**  
Fri, Nov. 18 **Double Trouble, 8 PM**  
Fri, Dec. 16 **Mei-Mei Hammer, 8 PM**

### Special Programs

Sat Aug. 13: **Manhattan All Day Sacred Harp Singing, Holy Trinity Church, 9:30am-3:30pm**

### Weekends

- Oct. 21-23: **Fall Folk Music Weekend with Finest Kind at Kutz Camp, Warwick, NY**  
Feb. 4-6: **Winter Folk Music Weekend, Warwick Conference Center, Warwick, NY**

### Workshops

Sun, Oct. 2 **Balkan Singing Workshop 2-4 PM**

### Informal Jams and Sings

- Sat, July 2: **Riverdale Sing Keep Cool Party, 6pm in Yonkers**  
Sat, July 16: **Sing and Swim Party at the Cohen's, Jamaica, Queens**  
Sun, Aug. 14: **Picnic and Sing at the Ritchie/Pickow's, Port Washington**  
**Folk Open Sing;** First Wednesday of each month: (June 1, July 6, etc); 7-10:30 pm at the Ethical Culture Society in Brooklyn.  
**Gospel & Sacred Harp Sing:** Sunday, 3pm (will resume in the fall).  
**Riverdale Sing;** in Riverdale, the Bronx: Thursday, June 23.  
**Riverdale Sing Keep Cool Party;** Riverdale, Saturday, July 2, 6pm  
**Sunnyside Song Circle:** 2-6pm Sunday in Queens (will resume in the fall).  
**Sacred Harp Singing** at St. Bartholomew's in Manhattan, 3rd Sun., 2:30pm, (June 19, July 17, etc)  
**Chantey Sing** at Seamen's Church Institute, South Street Seaport; usually 2nd or 3rd Saturday, 8pm: June 18, and July 16

### Business, Meetings, etc.

- Newsletter Mailing,** Thursday, June 2, 7pm, at the Club office, 450 7th Ave. (between 34 and 35 St.), room #972D. Information: 1-718-426-8555  
**Executive Board Meeting:** 7:15 pm, 2nd Monday at the Club office, 450 7th Ave., room 972D. (June 13, July 11, etc.). Info 1-718-575-1906

# The Folk Process

by Ruth Lipman



On May 22, in conjunction with her acting class at JASA, ANN GREEN presented a scene from "The Man Who Came To Dinner." For dessert she's planning some nice treats. In June she will travel to Cape Breton Island in Nova Scotia with Elder Hostel for workshops on nature and Scottish studies. Afterwards, she'll visit a friend in Toronto. Then it's off to Bulgaria with a folk dance group in July. Bon voyage.

SUSAN CONTENTO and MIKE O'MALLEY are delighted to let us all know that they will have two graduations this June. Their daughter, RIONA FAITH O'MALLEY, will be graduated from high school a year early. Fiona's next venture will be to study fashion design at Drexel University in Philadelphia. Their son, ROBERT O'MALLEY, will be graduated from middle school. In the fall, Robert will attend Leon Goldstein High School, located on the campus of Kingsborough College. Congratulations and best of luck, Riona and Robert.

Other high school graduates also include the son of Eileen Pentel and Don Wade, Willie Wade-Pentel, who will be attending U.Mass at Amherst in September, and the son of Marie Mularczyk and Rick O'Connell, Brian O'Connell, who will be attending NYU in September. I know that there are other graduates out there. Please let me know who they are for our next month's column.

SHEILA EWALL enjoyed a pleasant few days in Washington, D.C. She is proud of her nephew, EVAN, who is now working as a senior production manager at Big Interactive in Los Angeles and of her niece, MARNI, who is presently attending Hofstra Law School.

If you have news to share, contact me at 372 Central Park West, #15B, New York, NY 10025; 212-663-6309

---

## 30 Years Ago This Month

compiled by Harvey Binder

Here are some club happenings as reported in the June, 1975 newsletter:

- Shirley Keller performed in a house concert at the home of Bob Rodriquez.
- Tresa O'Driscoll performed in a house concert at the home of Rene Lawless.
- Zenska Pesna performed in a house concert at the home of Wayne Hollingworth.
- Seaport Day was celebrated. Featured performers were Lyn Burnstine, Saul Broudy, Jeff Davis, John DuBois, Cynthia Gooding, Debby McClatchy, Jim Morrison, Jan Oosting, Ring O'Bells Morris Team, Roberts & Barrand, Jeff Warner, and Zenska Pesna.
- The club presented, in concert, Hedy West. This was the first in a series of Wednesday concerts at the South Street Seaport. Others in June featured Sandy and Caroline Paton, John Jackson, and Ola Belle Reed & Kilby Snow.

Folk music around town included: FOCUS>Peter Assail/Adrienne Belanger, Debby McClatchy, Gary Rosen & Bill Shonz, Dirty song contest; ROSEBUD>Jessica Tillman, Dennis Andreopoulos; O'LUNNEY'S>Caffrey Family; PIT>Alan Corby, Kathy Kurs, Bill Polankowski, Abe & Malka, Steve Fox; SOUTH STREET SEAPORT>Buffalo Gals, Good Ole Boys, Charlie Moore & The Dixie Partners, California English, Georgia Flyer, Ted Lundy & The Southern Mountain Boys, Central Park Shieks, Original Traditional Jazz Band, Buck White & The Down Home Folks, Speakeasy Jazz Babies; GREENPOINT SAVINGS BANK>Canarsie 5; NATHAN'S>Bergerfolk; BOTTOM LINE>Sing Out Benefit with Don McLean/Bernice Reagon/Red Clay Ramblers/Dorothy Carter/An Claidheamh/Suni Paz & Abby Newton/Larry Johnson/Sara Cleveland; RENE LAWLESS' HOME>Tresa O'Driscoll/Father Charlie Coen; MARILYN MALTZER'S HOME>Steve Caccavo; AMERICAN MUSEUM OF NATURAL HISTORY>Marion Wade

Folk Music Society of N.Y., Inc.

# FALL FOLK MUSIC WEEKEND

## October 21-23, 2005

at Kutz Camp, Warwick, NY

featuring:

### Finest Kind

(Ian Robb, Shelly Posen, Anne Downey),  
Mary Jones, plus others

**Workshops - Concerts - Informal Singing  
and more music than you can shake a stick at**

Rates (per person):	Shared	Private	Single
	Bath	Bath	Shared Bath
non-member Adults	\$206	\$256	\$302
member Adults*	\$191*	\$241*	\$287*

Children (sharing with 2 adults)

age 7-13, \$99; age 2-6, \$61; under 2, free

\*members prices if registered before October 10th

All rooms are multiple occupancy. Where possible, couples will be housed in their own room. Most rooms are shared bath. There are a limited number of rooms with private bath available on a first-come, first-served basis. Single rooms, if available, are shared bath only.

Send this form with a Stamped, Self-Addressed Envelope and check payable to FMSNY to: Joy C. Bennett, 111-39 76 Road, Forest Hills, NY 11375; 1-718-575-1906.

*Note: payment in full is required with registration. All but \$10 is refundable until Oct. 7th. All but \$45 is refundable after that date. No refunds for no shows.*

Here is my full payment for the 2005 FALL Weekend for:

\_\_\_\_\_ adults, at \$\_\_\_\_\_ each ; \_\_\_\_\_ children, age \_\_\_\_\_, at \$\_\_\_\_\_ ea.

Name \_\_\_\_\_ Phone day (\_\_\_\_) \_\_\_\_\_

Address \_\_\_\_\_ eve (\_\_\_\_) \_\_\_\_\_

City \_\_\_\_\_ State \_\_\_\_\_ ZIP \_\_\_\_\_

E-mail: \_\_\_\_\_

Emergency contact phone number during weekend: (\_\_\_\_) \_\_\_\_\_

Other Names in Party: \_\_\_\_\_

Requested room or roommate? \_\_\_\_\_

I don't eat beef.  I don't eat any meat.  I don't eat fish.

I will be driving from \_\_\_\_\_

at \_\_\_\_\_ AM/PM and can take \_\_\_\_\_ additional passengers.

I need a ride, from \_\_\_\_\_, if possible.

Do not include my phone number in the address list

## **Tom Gibney**

(19 October 1948 - 9 April 2005)

As mentioned briefly in the May newsletter, Tom left us after a battle with ocular melanoma. Throughout his illness, he never lost his unfailing cheerfulness, invariably responding to inquiries as to his condition with, "Groovy."

A superb singer of traditional songs, Tom was also a fine musician, whether on guitar, banjo, or fiddle, and a tasteful accompanist and harmonizer. Born of Irish parents (his mother's family, the O'Dowds of Sligo, boasted many fine musicians), Tom's real love was not for Irish music, but for the traditional music of the U.S. and Britain. Also Beethoven, early music, Scandinavian music. And more. He loved Sacred Harp, and attended many local conventions.

Tom's son Michael said at his memorial, "He was silly, and he was serious. He was self-effacing and he was self-assured. He was gentle and he was intense. The common thread tying his personality together is that he was himself, always. It is comforting to know that he will always be himself... as a part of our family, and as a part of all of our lives."

We extend our sympathy to Tom's wife Patti and his sons, David and Michael.

*Heather Wood*

---

## **Cyril Tawney (1930-2005)**

Sadly, English singer and songwriter Cyril Tawney passed away after a long illness on 21 April. Cyril had been singing folk songs for a living longer than anyone else in Britain (45 years as a full-time professional as of May 2004).

Born into a lower-deck Royal Naval family, Cyril joined the navy at 16 and served mainly in submarines. In early 1959 he became the only regular serviceman ever to have his own fully-networked TV programme

Much of Cyril's repertoire was traditional material, but in the late 1950s he began to write his own songs, many of which have become standards ("The Grey Funnel Line," "Sammy's Bar," and the much-recorded "Sally Free and Easy" for instance). He is the only songwriter to have his work included in both *The Oxford Book of English Traditional Verse* and *The Oxford Book of Sea Songs*. He also worked on the collection and preservation of traditional songs originating in the wardrooms and messdecks of the 20th century Royal Navy, resulting in his unique book *Grey Funnel Lines*.

Cyril helped pioneer the British folk club movement in the 1960s. The role of The Shantymen in Peter Bellamy's ballad opera *The Transports* was created especially for him. Cyril was a help and inspiration to many young singers, including myself. He was a warm, funny, and extremely talented person, who will be sorely missed. He is survived by his wife, Rosemary.

Details of Cyril's recordings and books are on his website, <http://pages.britishlibrary.net/tawney>

*Heather Wood*



# From the Editor

Welcome to the month of June. Wonderful weather-but not the hot days of July and August. Wonderful music as well. The Sea Music Concerts on Tuesdays are in full swing and the Chantey Sing takes place as well. We are also pleased to bring you the Sara Grey & Kieron Means concert as well as the Sacred Harp Singing, and the Riverdale Sing on both June 23rd and July 2nd. Take note of the early July date events since the July/August Newsletter will be mailed out on July 7th.

June is a month of graduations. See Ruth Lipman's column.

We have sad news as well. See the Obits in this newsletter.

Thank you to the volunteers who help to put out the newsletter each month and ensure that you get the word about what's going on in the club and at events throughout the city. They could always use more help. For the May Newsletter thank you to: *Irene Anderson, Al Cadwallader, Isabel Goldstein, Mariann Perseo, Marcus Tieman, Tom Weir, and Don Wade* who also delivered the pages from the printer. Won't you join us on Thursday, July 7th, and help mail out the next newsletter? (See p.3).

---

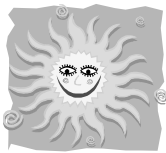
## Office Space Needed

The Club continues to look for more appropriate office space. We need space for a desk (with our computer and phone), file cabinet and 2 storage cabinets in a place that is accessible evenings, nights and weekends so our volunteers can get there after their "day" jobs. We also need access to an area that we can use 2 evenings a month for our board meetings (20 people) and our newsletter mailings. We're looking for a Manhattan location with no cats; something shared with another nonprofit might be ideal. This is a continuing search; if you have any ideas, contact Don Wade, 1-718-426-8555 or e-mail <WadeD@ncc.edu>.

---

## Volunteers needed to attend the Falcon Ridge Festival, July 21 to July 24, 2005.

We have complimentary tickets, which include admission and camping. See their ad in this issue. In order to accept this offer, you must be willing to hand out the Folk Music Society of N.Y., Inc. material—newsletters, flyers, etc. Call Eileen Pentel at 718-672-6399 for more information.



**SATURDAY, JULY 2nd**  
**6 PM Potluck, 7 PM Music**  
RIVERDALE SING  
**"KEEP COOL PARTY"**



Join us for a pot luck dinner and music party at the home of Marc Beneteau and Rebekah Mulhare, 134 Shonnard Terr. in Yonkers. The pot luck is at 6:00 PM and then we'll have music starting at 7:00 PM. Bring something to eat or drink, plus instruments and voices.

The house is one block away from the Bee-Line #1 bus (which can be taken from the #1 or #9 train at 242nd St.) and 10 minutes from the Glenwood Station on Metro North. For travel directions or information call Marc at (914) 376-4956.

## Weekend Help Wanted

Full and Partial Scholarships are available in exchange for work done on our folk music weekends (Spring, Fall, and Winter). We need help with some of these essential jobs so please think about the **Fall** weekend now! Contact the Club President, Joy Bennett, 1718-575-1906 if you are interested in any of the jobs below.

**Weekend Chair:** A management job with responsibility for the performance of all of the other jobs. On the weekend is the club's contact with the manager of the facility we are using. (half scholarship)

**Assistant to Weekend Chair:** Supervise the room arrangements. Set-up rooms for use and clean-up. (half scholarship)

**Typist/Room Assigner:** Types the address list and assigns rooms; sends out the advance schedules. It helps to know a lot of club members and be able to arrive earlier to help greet arrivals at camp. (half scholarship)

**Transportation:** Tries to find rides to and from camp for all who need them. Gets and gives out info. on public transportation if needed. (full scholarship)

**Waiters:** (4-5) Set & clear tables, serve meals. (full scholarships)

**Baby-sitter:** (Depends on need.) Cares for smaller children, particularly during evening concerts. (full Scholarship)

## *Folk Music Events Calendar*

For addresses, times, phone numbers, and other details, **see the location information following this and the repeating events.** *A listing of repeating events, by day, are found on the pages following these chronological listings.* The events with an asterisk (\*) are run by the club and more information is on pages 2-3; other events in the listings below are not run by the Club, and the information given is the best available at press time. Everyone is encouraged to send complete information for listing to: Lenore Greenberg, 120 Boerum Place, #1J, Brooklyn, NY 11201; 718-403-0347; E-mail: lenoreg@nyc.rr.com. DEADLINE: the 12th of the **preceding** month.

### Around NYC — June

- |       |                                                                                                                             |        |                                                                                                                                                |
|-------|-----------------------------------------------------------------------------------------------------------------------------|--------|------------------------------------------------------------------------------------------------------------------------------------------------|
| 3 Fr  | <b>David Ippolito:</b> Good CH                                                                                              | 11 Sa  | <b>Laurie Lewis:</b> Satalla, 7:30pm                                                                                                           |
| 3 Fr  | <b>Dave's True Story:</b> Satalla, 7:30pm                                                                                   | 11 Sa  | <b>Triboro:</b> 22 below                                                                                                                       |
| 4 Sa  | <b>Lower East Side Shape Note Sing:</b> The Living Room, 3-6pm.                                                             | 12 Su  | <b>Joe Beasley Sacred Harp Sing</b>                                                                                                            |
| 4 Sa  | <b>Duke Robillard; blues guitar:</b> Satalla, 7:30pm                                                                        | 13 Mo  | <b>The Chelsea String Band:</b> The Muddy Cup Café; Staten Island                                                                              |
| 5 Su  | <b>Rod MacDonald:</b> Uptown CH,                                                                                            | 14 Tu* | <b>Sea Music Concert; The NexTradition + NY Packet:</b> South St. Seaport, 6pm. See p2                                                         |
| 5 Su  | <b>Zlatne Uste; Traditional music of the Balkans:</b> Satalla, 7:30pm                                                       | 16 Th  | <b>Gandalf Murphy &amp; his Slambovian Circus of Dreams:</b> Satalla, 7:30pm                                                                   |
| 6 Mo  | <b>Patty Larkin:</b> Satalla, 7:30pm                                                                                        | 16 Th* | <b>Sara Grey &amp; Kieron Means:</b> 7:30pm at Westbeth, See p3                                                                                |
| 7 Tu* | <b>Sea Music Concert; Mick Moloney + NY Packet:</b> South St. Seaport, 6pm. See p2-3                                        | 17-19  | <b>Redhawk Native American Festival:</b> Floyd Bennett Field. 718 686-9297. <a href="http://www.redhawkcouncil.org">www.redhawkcouncil.org</a> |
| 10 Fr | <b>Southern Schoolhouse Rascals:</b> Good CH                                                                                | 18 Sa* | <b>Chantey Sing:</b> Seamen's Church Inst. 8pm. See p2-3                                                                                       |
| 10 Fr | <b>Geno Delafosse &amp; French Rockin' Boogie:</b> Satalla, 8pm                                                             | 19 Su  | <b>C.J. Chenier:</b> Satalla, 6:30pm                                                                                                           |
| 11 Sa | <b>NYC Labor Chorus 7<sup>th</sup> Gala Benefit Concert:</b> CUNY Graduate Ctr. 365 5 <sup>th</sup> Ave., 7pm. 212 929-3232 | 19 Su* | <b>Sacred Harp Singing:</b> St. Bart's, 2:30pm. See p2-3                                                                                       |

*Calendar Listings Continued from previous page*

- 21 Tu\* **Sea Music Concert; Rick Spencer & Marc Bernier + NY Packet:** South St. Seaport. 6pm. See p2
- 23 Th\* **Riverdale Sing:** Riverdale Prsby. Church. 7:30-10pm. See p2-3
- 24 Fr **Swedish Midsummer Festival** :Robt. Wagner Jr. Park, Battery Pl. & West St. 5-8pm
- 24 Fr **Brooklyn Women's Chorus:** Good CH
- 24 Fr **D'Gary; Guitar King of Madagascar:** Satalla
- 28 Tu\* **Sea Music Concert;; Stout Extra Strength + NY Packet:** South St. Seaport, 6pm. See p2

**Around NYC — July**

- 2 Sa\* **Riverdale Keep Cool Party** in Yonkers, see p.3
- 5 Tu\* **Sea Music Concert; Jan Christensen + NY Packet:** South St. Seaport. 6pm. See p2
- 6 We\* **Folk Open Sing:** Brooklyn, 7pm. See p2-3
- 7 Th\* **Newsletter Mailing;** see p.3
- 8 Fr **Ellsworth & Hicks Bill Kirchen;** Sunset Music, Bklyn
- 10 Su **5<sup>th</sup> Ann. Woody Guthrie Birthday Bash:** CB's 313 Gallery
- 10 Su **Joe Beasley Sacred Harp Sing**

**Long Island — June**

- 4 Sa **Annual Members Concert:** FMSOH
- 4 Sa **Youth Fiddle Workshop:** LITMA, Brush Barn, 10am -noon
- 11 Sa **Steel Pulse:** IMAC, 9pm
- 12 Su **Sacred Harp Sing:** LITMA, Huntington Sta. 1-5pm
- 17 Fr **Amy Carol Webb:** Our Times CH
- 18 Sa **Robert Fripp:** IMAC, 9pm

**Long Island — July**

- 6 We **Donovan:** Planting Fields

**New York State — June**

- 3 Fr **The McKrells:** Towne Crier
- 4 Sa **Ken & Julie:** Country House Arts Ctr. Bloomingburg. 8pm. 845-733-4309
- 5 Su **Harvey Reid:** Listen Inn, 3pm
- 8 We **disappear fear:** Turning Point, 7:30pm
- 10 Fr **Dorothy Scott:** Turning Pt, 8pm
- 11 Sa **Joe Shain w Bill Newton:** Rosendale Café 9pm

- 11 Sa **Greek Heritage & Arts Festival:** Sullivan County Museum; Hurleyville. 6pm  
www.catskillartssociety.org
- 11 Sa **Greg Brown:** Mainstage CH; Irvington Town Theater
- 11 Sa **Prof. Louie & the Crowmatix:** Turning Point 10:15pm
- 18 Sa **Dennis Gruenling & JumpTime:** Towne Crier
- 18 Sa **Paul Mlyn + Ken & Julie:** Bloomingburg, 8pm. 845-733-4309
- 19 Su **Steve Forbert:** Turning Pt, 7pm
- 19 Su **Terrence Simien & The Mallet Playboys:** Towne Crier
- 23 Th **Jordan Chassan:** Turning Point, 7:30pm
- 24 Fr **John Hammond:** Turning Point, 8 & 10:15pm
- 25 Sa **Ken & Julie at Greenwood Lake:** The Greenwood Grind, 8-11pm. 845 477-2140

**New York State — July**

- 9 Sa **Chip Taylor & Carrie Redriquez:** Towne Crier
- 9 Sa **Folk Music Returns to Woodstock:** Christina Varga Gallery. 130 Tinker St. 7:30-10pm. 845 679-4005

**New Jersey — June**

- 4 Sa **Modern Man & Paul & Storm:** Sanctuaraary Concerts
- 10 Fr **Nightingale:** Minstrel CH
- 10 Fr **Darden Smith & Greg Trooper:** Outpost CH
- 17 Fr **Magpie:** Minstrel CH
- 18 Sa **End of Year Party & Concert w Zoe Lewis, Roxanne Layton & Mannnheim Steamroller:** Sanctuary Concerts
- 24 Fr **Jeremy Kittell:** Minstrel CH

**New Jersey — July**

- 1 Fr **Bryan Bowers:** Minstrel CH

**Connecticut — June**

- 4 Sa **The Dulcimer Folk Association:** Sounding Board
- 4 Sa **Teada:** U. of Hartford. 7:30pm
- 4 Sa **Atwater Donnelly:** Vanilla Bean
- 11 Sa **Joel Cage:** Vanilla Bean Café

---

**The Club's web page:  
www.folkmusicny.org**

---

## Repeating Events

Note: all are subject to change; it is wise to call and check. (Locations listed in the Events Calendar are usually **not** included below.). **Save this list as some months it is not printed in its entirety.** Additions and Corrections to this list are most welcome! Send all location information to: Don Wade, 35-41 72nd St, Jackson Heights, NY 11372; Phone: 1-718-426-8555; E-Mail: WadeD@ncc.edu

#=new or changed item.

### NYC BLUEGRASS & OLD-TIME

(also try <http://www.banjoben.com>)

#### Sundays:

*Jack's Pub*, 519 5 Ave (bet. 13 & 14 St.), Brooklyn, Bluegrass Picking Party 5-8pm; <http://www.ponkiesburg.com/home.php>  
*Puddy Reilly's*, 519 2 Ave, Manhattan (29 St) 212-686-1210; bluegrass jam 5-8pm; Sunday (see also Irish multi-day listings); 212-686-1210; <http://www.bigapplebluegrass.com> *Puck Fair*, Lafayette, just below Houston Street; 9:30-12:30; [www.puckfair.com](http://www.puckfair.com)

#### Mondays:

*The Parkside Lounge*, 317 Houston St (bet Ave's B & C); 212-673-6270; 9pm-midnt; bands/leaders rotate between John Herald, Big Apple'achia, Orrin Star, Mary Olive Smith.

*The Stinger Club*, 241 Grand St between Driggs Ave and Roebing St, Williamsburg, Brooklyn; 718-218-6662; hosted by Bklyn Browngrass (City Grass, last Mon)

#### Tuesdays:

*Clinton Grille*, 637 Tenth Ave (46 St) 212-315-4690; Groovelily, 8pm (212-245-2063)

#### Wednesdays:

*Baggot Inn*, 82 West Third St bet Sullivan & Thompson, Uncle Bob's Bluegrass Jam, 9pm, <http://www.bigapplebluegrass.com>

#### Thursdays:

*Freddys*, Dean St & Sixth Ave, Brooklyn, 718-622-7035; Old-Time Jam, 8-11pm first Thursday; <http://members.aol.com/freddysbrooklyn>

*Old Devil Moon Resturant* (Southern cuisine), 511 E.12th St at Ave A; 1212-475-4357; 8 pm; *The Parkside Lounge*, 317 Houston St (bet Ave's B & C); 212-673-6270; 3rd Thurs; Big Apple'achia.

#### Fridays:

*Sonny's* in Red Hook, Bklyn, see next item

#### Saturdays:

*Baggot Inn*, 82 West Third St bet Sullivan & Thompson, 3rd Sat, Sheriff Sessions, American Roots Music, 9pm,

*Sunny's*, 253 Conover St (between Reed & Beard St) Red Hook, Brooklyn, Second Sat. Kate & Lou Band; 8:30pm; <[www.kateandlou.com](http://www.kateandlou.com))

### NYC GENERAL REPEATING MUSIC:

#### multi-day:

*BB King's Blues Club*, 237 W. 42nd St, 1-212-997-4144; [www.bbkingblues.com](http://www.bbkingblues.com) various live music all week

*Brazen Head*, 228 Atlantic ave (Boerum Pl & Court St), Brooklyn; 718-488-0430; various live music all week

*C Note*, 157 Ave C (10 St); 212-677-8142 performances nightly 7-11pm with Songwriter's open mike Sun's

*The Ear Inn*, 326 Spring St; 212-226-9060; Mon's & Wed's

*Orange Bear*, 47 Murray St; 212-566-3705; Mon's @ 7pm, bands & singers; Sun's 6-9pm, open mic

*Sidewalk Cafe*, 94 Ave A (6 St.); 212-473-7373; Antihoot Mon's @ 7:30, performers nightly; [www.antifolk.net](http://www.antifolk.net)

#### Mondays:

*Charles Street Synagogue*, 53 Charles St (at W. 4 St, 2 bl. N. of Sheridan Sq); American roots music most Mondays w/ **Andy Statman & Friends**; 8:30pm; 212-242-6425 <[info@andystatman.org](mailto:info@andystatman.org)>

*Jewish People's Philharmonic Chorus*, 6-7:30PM, Dorot, Inc, 171 W. 85th St; info: Nan Bases, 212-807-1568

*The Lounge at TRIAD*, 158 W. 72 St, 212-362-2590; open mic 7-9pm

*Open House Coffee House*; Advent Lutheran Church, 93 St. & B'way; 212-874-3423; 7:30-9:30PM

#### Tuesdays:

*South Street Seaport*: Sea Music Concerts in June and July, 6-8pm in the Gallery, Water St, at Beekman, 1 block north of Fulton St. See pages 2-3 for more information

#### Wednesdays:

*NYPFMC Folk Open Sing*, 1st Wed; 6:30pm; Ethical Culture Society, 53 Prospect Park West, Brooklyn (near 2nd St)— see page 2 or 3

*Cornelia Street Cafe*, 29 Cornelia Street, Greenwich Village. The Songwriter's Beat, an acoustic night for songwriters hosted by Valerie Ghent, 3rd Wed. [www.songwritersbeat.com](http://www.songwritersbeat.com), [www.corneliastreetcafe.com](http://www.corneliastreetcafe.com), or 212-989-9319

#### Thursdays:

*New York Caledonian Club* §: Pipes & Drums of the NY Scottish, rehearsals every Thurs, Chanters at 6; pipes at 7, info 212-724-4978; (PO Box 4542, NYC

*Repeating Events Continued from previous page*

10163-4542; 212-662-1083)

*Freddys*, Dean St & Sixth Ave, Brooklyn, 718-622-7035; Open Mic Third Thursday; <http://freddysbackroom.com>

*Charles Street Synagogue*, 53 Charles St (at W. 4 St, 2 bl. N. of Sheridan Sq); music of the Jewish Mystics most Thursdays w/ **Andy Statman & Friends**; 8:30pm; \$10; 212-242-6425  
<[info@andystatman.org](mailto:info@andystatman.org)>

*Langston Hughes Community Library & Cultural Center*, Queens Public Library; 102-09 Northern Blvd, Corona; 718-651-1100; monthly open mic nights, 7:30pm; 5 min. each for poets, singers, dancers, writers, playwrights, storytellers (any bands must be acoustic); free

*Old Stone Coffeehouse*, 336 3rd St. between 4th & 5th Ave., in J.J. Byrne Park, Park Slope, Brooklyn. Third Thursdays, 8pm; \$5; 917-541-7076  
<[stammers@stammers.com](mailto:stammers@stammers.com)>

*Unknown Pub*, 355 Prospect Av, Park Slope, Bklyn; Open Mic 8pm; 718-788-9140

**Fridays:**

*Hungarian House*, 213 E. 82 St, betw 2 & 3 Ave; Bulgarian Singing Classes w/ Pepa Koutcheva; 6:30-7:30pm; free. info: 212-289-8203 <[www.cnct.com/~ginbirch/fdf](http://www.cnct.com/~ginbirch/fdf)>

*#Mug Café*, 446 E.13<sup>th</sup> St. 7:30-10:30; "Folk Fridays" every Friday

*New York Caledonian Club* §: Ceilidh, First Fri, call for info (PO Box 4542, NYC 10163-4542; 212-662-1083); 212-724-4978

*Postcrypt Coffeehouse*; St. Paul's Chapel bsmt, Columbia Univ. 116 St & B'way; Fri & Sat - school year only (closed May-Sept. & Dec.-Jan.), 9pm, free; 212-854-1953; <[postcrypt@columbia.edu](mailto:postcrypt@columbia.edu)> <http://www.cc.columbia.edu/~crypt/>

**Fri & Sat:**

*Two Boots*, 514 Second St (at 7 Ave) Park Slope, Brooklyn; shows Fri & Sat 10pm; 718-499-3253

**Saturdays:**

*Living Room*, 154 Ludlow St (bet. Stanton and Rivington); 1<sup>st</sup> Sat. Shape note Singing from the Sacred Harp, 3-6pm, free; [lowdowngriggs@erols.com](mailto:lowdowngriggs@erols.com) 212 777-9837 [www.livingroomny.com](http://www.livingroomny.com)

*Seamen's Church Institute*, 241 Water St (north of Fulton St.), 2nd floor, Manhattan; once monthly Chanty Sing; 8-11pm; see p.2-3; info: Becker, 212-748-8675 <[www.eclipse.net/~gwb](http://www.eclipse.net/~gwb)>

*Postcrypt Coffeehouse*—see Friday

*Twenty-two Below* "The Non-smoking Cabaret"; Gustavus Adolphus Lutheran Ch., 155 E.22 St, 212-228-0750 or 212-674-0739; 9pm

**Sundays:**

*Centerfold Coffeehouse*; Church of St's Paul & Andrew, 263 W. 86 St, Manhattan (West End Av); Open mic/poetry reading at 5:45pm; info: Mary Grace, 212-866-4454.

*Klezmer Sundays at Tonic*: 1:30 & 3 pm; Tonic, 107 Norfolk St; 212-358-7503; \$10; food & drink available; <[www.tonic107.com](http://www.tonic107.com)>

Joe Beasley *Sacred Harp Singing*: 2nd Sun at St. Paul's Church, 199 Carroll St (cr. Clinton), Brooklyn; 718-793-2848; 2pm followed by Pot-Luck supper.

*Shape Note Sing*; St. Bartholomew's Church in Manhattan, enter 109 East 50th, between Lexington and Park Avenues, Room 33 (3rd fl); 3rd Sundays through June, 2:30-6 pm.; 212-750-8977

*NYC IRISH MUSIC: Open Sessions (free) & repeating music: (see also [www.inx.net/~mardidom/rcnycal.htm](http://www.inx.net/~mardidom/rcnycal.htm))*

**Multi-day:**

*An Beal Bocht Cafe*, 445 W. 238th St, Riverdale (Bronx) bet. Greystone & Waldo Ave); **Fri & Sat** trad Irish music; 718-884-7127

*Kate Kearney's*, 251 E. 50 St (2 & 3 Ave), 212-935-2045 ; **Sat** Irish Music 8:30pm w/Andy McGann, Donie Carroll+ ; **Thur** session w/ Don Meade, 8:30pm;

*Paddy Reilly's*. 519 2 Ave, Manhattan (29 St) 212-686-1210; **nightly** music 9:30pm; **Mon**, Joanie Madden & Carl Corcoran; **Tues**, 10pm Session w/Patrick Ourceau & John Dillon; **Thurs** Session w/ Tony Demarc; & Eamonn O'Leary, 10:30pm-1am; **Sunday** bluegrass jam 3-7pm, old time music jam, **Sunday** after the bluegrass jam, 9 - 12; [Yellowbarber@aol.com](mailto:Yellowbarber@aol.com); 212-686-1210

*Rocky Sullivan's*, 129 Lexington Av(bet 28 & 29 St), 212-725-3871; **Fri**, 6pm session w/ MatMancuso; & Annmarie Acosta; **Sat**, 7pm Joe "Banjo" Burke & Tom Dunne; **Mon** 9-12pm session

*The Catalpa*, 119 E. 233rd St, Woodlawn, Bronx; 718-324-1781 **Sun** session; **Wed**, Eamonn O'Reilly & Matt Mancuso

**Sundays:**

*Cannons*, 106 St; session with Linda Hickman & Patrick Ourceau

*Trinity Pub*, 229 E. 84 St bet 2 & 3 Av, 212-327-4450, 6:30pm session

*Thady Con's Bar & Rest.*, 915 2nd Ave (bet 48 & 49 St); Session 5-8pm w/John Redmond & Chris Layer; 212-688-9700

*Yeats Tavern*, 42-24 Bell Blvd, Bayside, Queens; 6pm session; 718-225-0652

*Doc Watson's*, 1490 2 Ave (77 St), 212-988-5300; 8:30pm session w/Niall O'Leary

*Repeating Events Continued from previous page*

*Maggie Mae's*, 41-15 Queens Blvd,  
Sunnyside, Queens, 718-433-3067; 6pm  
The Tain

*The Wall*, 55 St & Roosevelt Ave, Woodside,  
Queens, 718-429-9426

**Mondays:**

*Baggot Inn*, 82 West Third St bet Sullivan &  
Thompson, 8:30-11pm

*Mona's*, 224 Ave B bet 13 & 14 St, Session  
w/ Patrick Ourceau & Eamon O'Leary,  
212-353-3780

*Swift's*, 34 E. 4 St; performance 8:15pm;

*The Coach House*, 59-21 Roosevelt Ave,  
Woodside, Queens, 718-424-5640 ??

**Tuesdays:**

*Jack Dempsey's Pub*, 61 2nd Ave (bet 3 & 4  
St); session: 8pm; 212-388-0662

*Swifts Hibernian Lounge*, 34 E. 4th St (bet  
Bowery & Lafayette), 212-260-3600; 9pm  
session w/ Marie Reilly, John Redmond,  
Eamon O'Leary, Chris Layer

*O'Reilly's*, 56 W.31 St bet 6th & B'way, 9pm  
session; 212-684-4244

*Sparky's Ale House*, 481 Court St, Brooklyn,  
718-624-5516; every other Tue, 9pm  
session w/ Matt Darriau

**Wednesdays:**

*The Scratcher*, 209 E. 5th St (bet 2 Ave &  
Bowery), 212-477-0030; session 11pm w/  
Fiona Dougherty & Eamon O'Leary

*Fiddlesticks Pub*, 54-58 Greenwich Ave (bet 6  
& 7 Av), 212-463-0516; perf by Morning  
Star

*The Gate*, 321 5th Ave at 3rd St, Brooklyn,  
718-768-4329; 8pm session w/Arbro  
Dougherty+

**Saturdays:**

*O'Neills Irish Bar*, 729 3rd Ave (nr. 46 St);  
9pm session; 212-661-3530

**LONG ISLAND REPEATING EVENTS**

**Multi-day:**

*Brokerage Club*, 2797 Merrick Rd (off  
Wantagh Pkwy, exit 6N W), Bellmore;  
some folk/Acoustic/Blues; 8 or 8:30pm;  
21 & over; 516-785-8655 or -9349

**Monthly:**

*Irish American Hall*, 297 Willis Ave,  
Mineola; 516-746-9392 (9:30am-1pm), 1  
block North of Jericho Tpke (route 25).  
Irish-American Society Ceilidh once a  
month.

*American Legion Hall*, 115 Southern Pkwy,  
Plainview; 516-938-1519a. Mid-Island  
Irish-American Club Ceili 1st Sat.

*Our Times Coffeeshouse*, First United  
Methodist Ch, 25 Broadway/Rt. 110,  
Amityville (nr. Merrick Rd/Montauk  
Hwy); first Friday Oct. thru June, 8PM;  
\$6 (\$3 child/student); 631-798-0778.

**Tuesdays:**

*Chowder House*, 19 Bellport Rd, Bellport;  
516-286-2343. Mostly acoustic, w/ sing-  
alongs & open mike *N'awlins Grill*,  
www.nawlinsgrille.com, 44 Willis Ave,  
Mineola, (516) 747-8488 Featured Artist  
+ host performers Dave Isaacs &  
Jackalope Junction; Open Mike 8:30p &  
10:30p for songwriters Jackalope Junction  
8p; Featured Artist 10p Kitchen open all  
night. Info: Dave Isaacs  
dave@jackalopemusic.com (516) 877-  
1083]

*Field of Dreams*, Old Country Road,  
Bethpage; 516-937-7603. Blues Jam

**Wednesdays:**

*Broadway Beanery*, 2 B'way, Lynbrook; open  
mike 9pm Wed; 516-596-0028

*The Cup*, 3268 Railroad Ave, Wantagh; open  
mike 8:30pm Wed; 516-826-9533

*Dunhills*, Mineola, 516-248-1281: Buddy  
Merriam & Back Roads (Bluegrass) every  
other Wednesday ?? *Northport Library*,  
151 Laurel Avenue, Northport: 2nd Wed  
Northport Arts Coalition  
www.northportarts.org, 631-261-6930 in  
community room free!

*Starbucks Cafe*, 101 W. Park Ave, Long  
Beach; acoustic & poets open mike; 516-  
670-9181

**Thursdays:**

*Hunni's*, 530 N. Broadway, Amityville; open  
mike jam; 631-841-1800

*Java Coffee Company*, 135 Merrick Rd,  
Merrick; open mike; 516-771-8386

*Zen Den Cafe*, 14A Railroad Ace, Babylon;  
open mike; 631-321-1565

**Fridays:**

East Enders Coffee Shop, 40 East Main  
Street, Riverhead; 631-727-2656 Michele  
Monté <http://www.michelemonite.com>  
followed by Open Mike 8-11p

*Paradise Fellowship Coffee House* United  
Church of Christ, Rte. 112 North to 25  
East, 631-384-1102

*Peacesmiths House Cfehse*; 1st United  
Methodist Ch, 25 B'way/Rt. 110,  
Amityville; music/poetry first Fri (Oct-  
June); 516-798-0778

**Saturdays:**

*Java Cafe*, 660 Wellwood Ave, Lindenhurst;  
live acoustic music; 631-2253-1600

*Hard Luck Cafe*: 3rd Saturday of each month  
at The Congregational Church of  
Huntington, 30 Washington Drive,  
Centerport (north side of Route 25A at  
Huntington border; 8pm; refreshments  
available; run by Huntington FMS—see  
FMSOH in Calendar locations list.

*Repeating Events Continued from previous page*

**Sundays:**

Diamonds, Lindenhurst, 516-957-0001:  
Sunday afternoon jam sessions sponsored  
by Bluegrass Club of L.I., 516-289-0330

**UPSTATE NY REPEATING EVENTS**

**Multi-day:**

*The Art Gallery*, 14 Route 212, Mt. Tremper;  
Music & Poetry presented by Woodstock  
Acoustic Music and Poetry Society. Open  
mike nights Fri and Sat. Singer/  
songwriter Brother Hood host/featured  
artist at all shows. Adm free. 845-679-  
4362

*Cafe Lena*; 45 Phila St, Saratoga Springs  
518-583-0022; open nightly; Thurs open  
mic; [www.cafelena.com](http://www.cafelena.com)

*Cliffhanger Cafe*: Main Street, Keene Valley;  
Fridays, 518-576-2009

*Eighth Step Coffeehouse*; Cohoes Music Hall;  
Wed's, concerts some Fri; 518-434-1703

*Mother's Wine Emporium*, RPI, Rensselaer  
Union, 15th & Sage Ave, Troy;  
518-276-8585

*Old Songs, Inc*, PO Box 197, Guilderland  
12084; 518-765-2815; one Cncrt a month,  
dance 1st & 3rd Sat, at St. Marks Comm.  
Center, Guilderland

*Rumours*, 641 McLean Av, Yonkers; 914-969-  
7436; live Irish music wknd's + session  
some Sun's

*Spencertown Academy*, rt 203, between Taconic  
& Rte 22, Spencertown; "Folk Jam" 2nd  
Friday; 518-392-3693

**Monthly:**

*Pickin' & Singn' Gathern', Inc %*, 2137  
Pangburn Rd, Duanesburg, NY 12056  
<[www.caffelena.com/psg](http://www.caffelena.com/psg)>; Singaround  
meetings on 2nd Sun, Sept.-May, at  
location tba in Albany area; also  
Gottagetgon (Memorial Day) and Last  
Gasp (Labor Day) weekends; 518-961-  
6708

*Borderline Coffeehouse*, PO Box 167,  
Tallman 10982, monthly cncrts at Green  
Meadow Sch, rt.45 & Hungry Hollow  
Rd, Spring Valley; 8:30PM; 845-422-  
9176

*Cadillac Ranch Steakhouse*, next to the Super  
8 Motel in New Paltz; open mic on last  
Sunday; Contact Jeff Anzevino, Hudson  
Valley Bluegrass Association (845) 691-  
6784.

*St Lukes Church*, RT 100 and 202, Somers,  
N. Y.; Bluegrass jam first Friday at 8pm;  
Mike Burns, 845-276-2239  
<[mccueburns@aol.com](mailto:mccueburns@aol.com)>

*Lorien Coffeehouse*; Grafton Inn, Grafton,  
NY; (starts 3/31/2001); 518-658-3422

*Pirate Canoe Club*, Poughkeepsie NY.; Third  
Wed bluegrass jam: The Hudson Valley  
Bluegrass Association,  
<[mccueburns@aol.com](mailto:mccueburns@aol.com)> 845-276-2239

*Westchester Sing*: once a month meeting in  
homes. Info: Joan L Goldstein, 914-633-  
7110

**Tuesday:**

*Pajaso's*, Greenwood Lake (845)477-8595;  
open mike every Tues, 9pm-1am

**Wednesday:**

*Dunne's Pub*, 15 Shapham Pl (nr  
Mamaroneck Ave, White Plains, 914-421-  
1451; Wed session 7pm w/ Brian Conway

*Weekly Fiddle N' Folk Jam*; noon-1pm  
Senate House, Kingston NY for the  
winter In the summer, or when the  
weather is good on the lawn of the Senate  
House in Kingston, NY, free, info,  
(845) 338-2786,

<[BobLusk@hvc.rr.com](mailto:BobLusk@hvc.rr.com)>

**Friday:**

*Golding Park Cafe*: North Grand Street,  
Cobleskill; [www.goldingparkcafe.com](http://www.goldingparkcafe.com);  
518-296-8122

*Ireland's 32*:Route 59, Suffern, 7pm Irish  
session.

*Lil's Song Circle*: 8pm on 2nd Fri at various  
locations in NY & northern NJ. General  
info: Jerry Epstein, 201-384-8465.

*North Salem Folk Circle*: St. James Parish  
Hall, rt 116 & June Rd; hoot 1st Fri, 8  
pm; 845-279-2504, or 845-855-1020

*WESPAC Coffee House*, Westchester People's  
Action Coalition, 255 Martin Luther King  
Blvd (near E. Post Rd), White Plains;  
914-682-0488; 7:30pm; one Fri/month;  
\$7

**Fri & Sat:**

*Rosendale Cafe*, 434 Main St, Rosendale;  
845-658-9048; 9pm; cover & min;  
[www.rosendalecafe.com](http://www.rosendalecafe.com)

**Saturday:**

*Burnt Hills Coffeehouse*; bi-weekly; 518-882-  
6427

*Halfmoon Coffeehouse*, Old Dutch Reformed  
Ch, 42 North B'way, Tarrytown; 4th Sat

**Sat & Sun:**

*Warwick Valley Winery*, 114, Little York Road,  
Warwick, 2-5pm plus special concerts.  
[http://www.wvwinery.com/  
unplugged\\_01.html](http://www.wvwinery.com/unplugged_01.html); (845) 258-4858

**Sunday:**

*Ireland's 32*, Rte 59, Suffern, 845-368-3232;  
Sun 4pm session w/ Jim Coogan

*The Wild Geese Inn*, 665 Commerce St  
(rte.141) Thornwood, 914-747-526; 2nd  
& 4th Sun session w/ members of  
Comhaltas Ceoltori Eireann

**NEW JERSEY REPEATING EVENTS**

(also: [www.newjerseybluegrass.com](http://www.newjerseybluegrass.com))

*Bluegrass & Old Time Music Assn*; cncrts  
3rd Sun Sept-May, 11-7, M & M Hall,  
Texas Rd, Old Bridge; 201-583-1602

## Repeating Events Continued from previous page

**Coffee & Jam**, Grace Church, 2nd & Erie Sts, Jersey City; \$5, 1st Fri (?) open mic 7-8, music & poetry 8PM; 201-659-2211

**Coffee With Conscience**, Springfield Emanuel United Methodist Church, 40 Church Mall, Springfield, NJ; Sat, every other month; \$10; 973-376-1695

**Common Ground Coffeehouse**; First Methodist Ch, 111 Ryerson Ave, Newton (just down past Newton H.S.); 8pm 3rd Sat ea. mo, \$8; 973-383-2823

**East Brunswick Folk Music Club**, sings 3rd Tue; 7:45pm East Brunswick Library; info Ryders Lane (201) 257-5035.

**Grasshopper Also**, 645 Washington Av, Carlstadt, 201-460-7771; Irish Session Sun 9 or 10pm

**Montclair Friends Meetinghouse**, 289 Park St, Upper Montclair: Sacred Harp singing 4th Sun ea month 2-5:30pm; free; 973-746-0940

**Nassau Inn tap room**, Palmer Square, Princeton; Open Stage; Tues; 609-921-3857

**Stony Brook Friends of Old-Time Music**; Mannion's Pub & Restaurant, 150 West Main Street, Somerville, NJ. Open jam 1st & 3rd Tuesday at 7:45pm <jim@mazotas.com>; www.donegone.net/sbftotm

**Strings & Songs of Bergen Co** (c/o Laura Munzer, 504 Broadway, Passaic, NJ 07055; 973-773-9606; laura.munzer@verizon.net); monthly meetings in private homes

**Tommy Fox's Public House**, 32 So. Washington Ave, Bergenfield, 201-384-0900; Sun 7:30-10:30, Dominick Rooney & Linda Hickman

## CONNECTICUT REPEATING EVENTS

### Multi-Day:

**Molten Java Music**, 102 Greenwood Ave, Bethel, CT; Thursday 7:30-9:30; Friday open mic 8pm; Saturday 7:15-11pm; Sunday jazz, b-g, blues, gospel, 1-5pm; 1-203-739-0313;

### Saturday:

**Dulcimer Folk Assn of Central CT (%)**: informal gathering of varied musicians 1st Sat, 7 pm April thru Sept and 1pm Oct. thru March. at Old Avon Village, 39 E. Main St, Avon; Don Moore, 1-860-242-3003, <DonSawmill@aol.com>; www.dulcimerfolkct.org

**Greater New Haven Acoustic Music Society**; House Concerts, 203-421-0021 16 Sperry Rd. Madison, CT 06443; First Saturday each month <[http://revco.med.yale.edu/robc\\_nhm/acoustic.html](http://revco.med.yale.edu/robc_nhm/acoustic.html)>;

**Roger Sprung, Hal Wylie & Friends**, Folk, Irish, B-G, Trad., 1st Sat. at United Methodist Coffee House, Newton (exit 10 I-84); dinner 5-7:30pm, music 8-10:30pm 16 -

### Sunday:

**Conn. Valley Harmony**; free Sacred Harp sings 2nd Sun, 7-9pm at various locations, info: Susan Garber, 203-583-0841

**Interlaken Inn**, Lakeville; Brunch w/ Paton Family or others, 11am-2pm; 203-435-9878.

### Monday:

**Griswold Inn**, 36 Main St, Essex; Cliff Haslam; 860-767-1776, [www.griswoldinn.com](http://www.griswoldinn.com)

### Tuesday:

**Griswold Inn**, (see Monday); Don Sineti & "Finest Kind," 8-11pm

### Wednesday:

**The Lighthouse Cafe**, 63 Whitfield St, Guilford. Acoustic open mic Wed 7-11:30pm; 203-458-3555, [www.lighthousecafe.info](http://www.lighthousecafe.info)

### Thursday:

**New Haven Gaelic Club**; Venice Place, East Haven. Jams Thurs at 8; info: John O'Donovan; 1-203-281-3563.

### Friday:

**Performance Coffeehouse**, Milford Fine Arts Council, Center for the Arts, 40 Railroad Ave South (in former RR station) Milford; Last Friday, 8pm; 203-878-6647; [www.milfordarts.org](http://www.milfordarts.org).

**Thomaston Opera Coffeehouse**, 158 Main St, Thomaston; open mic once a month, 7pm, 1-203-729-3080, <hubcap@netzero.com>, [www.thomastonoperahouse.org](http://www.thomastonoperahouse.org) **Michael Bryan's Irish Pub at Wake Robin Inn** 106 Sharon Rd (Rte. 41) Lakeville, CT 06039; Friday night concerts; 860-435-2000; [http://www.wakerobinn.com/irish\\_pub.html](http://www.wakerobinn.com/irish_pub.html)

## PENNSYLVANIA REPEATING EVENTS

### Sunday:

**Pocono Bluegrass & Folk Society**; first Sunday jam at Elks Lodge in East Stroudsburg; \$3 adm, prizes, food; 570-421-8760 or 670-992-2259

---

## Volunteer Jobs Available; Mindless Work

Does your day job cause a lot of stress because you have to do too much thinking? Come and relax after work at our monthly Pinewoods newsletter mailings where all you have to do is label, staple, and stamp. See front page for mailing dates. Info: Isabel, 1-212-866-2029.

---

**The Club's web page:**  
<http://www.folkmusicny.org>



---

# Folk Calendar Listings Info

This list gives more detailed information for locations listed in the chronological Events Listings. It does not generally include information about locations in the Repeating Events listings

Space requirements force this info to be AN ABRIDGED LIST. For a complete listing of locations not in the calendar and out of town repeating events, see the November/December issue. For a listing of Dance events, see the September 2002 issue. Most of the events in the listings are not run by the Club, and the information given is the best available at press time. Additions and Corrections to this list are most welcome! Send all location information to: Don Wade, 35-41 72nd St, Jackson Heights, NY 11372; Phone: 1-718-426-8555; E-Mail: WadeD@ncc.edu

# = new information or listing

% = Folk Society with a newsletter which lists area events.

**AROUND TOWN** (The 5 boroughs of NYC); FOLKPHONE: 1-212-563-4099

Battery Park City: Robert F Wagner Park at the South End near the Battery; Rockefeller Park at the North End (enter at Chambers St). 212 267-9700 Family events: <http://www.bpcparks.org/bpcp/events/events.php>

Baggot Inn, 82 West Third St., Greenwich Village, NYC.

BB King's Blues Club, 237 W. 42nd St, 1-212-997-4144; [www.bbkingblues.com](http://www.bbkingblues.com)

CB's 313 Gallery, 313 Bowery (at Bleeker). 1-212-677-0455?.

Center for Jewish History, 15 W. 16 St., NY 10011; 917- 606-8200

Good Coffeehouse Music Parlor; Ethical Culture Society, 53 Prospect Park West, B'klyn 11215 (at 2nd St); 1-718-768-2972; Fridays, 8pm; \$10+. <http://www.bsec.org/events/coffeehouse/>

Inwood Coffeehouse at Café Seven Lounge, 4710 Broadway between Arden St. and Dongan Pl. (A or 1 train to Dyckman St.—2-1/2 blocks south of Dyckman St.); 1-212-567-6900; [info@karenhudson.com](mailto:info@karenhudson.com); Last Tues of the month-\$5 donation

Joe Beasley *Sacred Harp Singing*: 2nd Sun at St. Paul's Church, 199 Carroll St (cr. Clinton), Brooklyn; 1-718-793-2848; 2pm followed by Pot-Luck supper.

Living Room, 154 Ludlow St. (between Stanton and Rivington; F train to 2nd Ave.), 1-212-533-7235, [www.livingroom.com](http://www.livingroom.com); shape note singing 1<sup>st</sup> Saturday 3-6 pm; free

Mug Café, 446 E. 13<sup>th</sup> St. 7:30-10:30; "Folk Fridays" every Friday

Muddy Cup Cafe, 388 Van Duzer Street, Staten Island; 8pm (open mic, 7pm) 1-718-818-8100; No cover. Directions: <http://www.muddycup.com/mudlane/directions.html>

Parkside Lounge, 317 E Houston (at Attorney); bluegrass Hosted by the Orrin Star Duo + guests; 9pm-midnight; workshops, 1:30pm Sat/Sun, info: <<http://flatpick.com/ostar/Pages/workshopinfo.html>>; 1-212-673-6270 [www.parksidelounge.com](http://www.parksidelounge.com)

Riverdale Presbyterian Church, 4765 Henry Hudson Parkway (between 246-249 Streets, west side of parkway) NYPFMC open sing — see listing on p.2-3.

Satalla, 37 West 26 St (between 6 & B'way); 1-212-576-1155; \$20 plus one drink minimum [www.satalla.com](http://www.satalla.com) ;

Seamen's Church Institute, 241 Water St (north of Fulton St), 2nd floor, Manhattan; Monthly Chantey Sing 8-11pm; (donation asked). <http://www.woodshippmusic.com/nychanty/nychanty.html>.

South Street Seaport Museum, foot of Fulton St. at the East River in the Melville Gallery, 213 Water Street, at Fulton Street. 1 block north of Fulton St and the East River. Sea Music, see page 2

Sunset Music Series: Hudson Waterfront Museum, Foot of Conover St., Red Hook, Brooklyn; 1-877 238-5596; varied performers in order listed, Fridays, July & Aug; 8-11pm; \$10-15; info: [www.waterfrontmuseum.org](http://www.waterfrontmuseum.org); tickets: <http://www.smartix.com/>

Travers Park; 34th Avenue between 77 and 78 St, Jackson Heights, Queens); rain: IS 145 auditorium (80th Street between Northern Boulevard and 34th Avenue); Sundays, 4pm, free; <http://www.jhbg.org/events/events.html>

22 Below: Twenty-two Below "The Non-smoking Cabaret"; Gustavus Adolphus Lutheran Ch, 155 E.22 St, Manhattan, 1-212-228-0750 or 1-212-674-0739; Sat, 9pm

Uptown coffeehouse, Ethical Culture Soc, 4450 Fieldston Rd, Riverdale (Manhattan College Pkwy); Sun 7PM, Sun 7PM, \$15 adult (\$13.50 seniors, students; \$3 children); 1-718-885-2955; <http://www.uptowncoffeehouse.org..kerner@csam.com> 03/03]

*Calendar Listings information Continued from previous page*

Wagner Park – See Battery Park City

Westbeth Community Room: Westbeth is on the block between West & Washington Sts, and Bethune and Bank Sts. The entrance to the courtyard from Bethune Street is up several steps, halfway between Washington and West Sts. Wheelchair access from Bank St.

Irish Seisiums, and repeating Music: separate listings precede the location info. Dance information follows the location information pages.

**NYPFMC FOLKPHONE:** 1-212-563-4099.

Call for a recording of events in the 5 boroughs of NYC; changes updated weekly

**LONG ISLAND**

FMOH=Huntington Folk Music Society % (PO Box 290, Huntington Station 11746) Hard Luck Cafe 1st Sat and concerts 3rd Sat each month at The Congregational Church of Huntington, 30 Washington Drive, Centerport (north side of Route 25A at Huntington border). An open mike at 7:30PM precedes each concert at 8:30Pm; 1631-425-2925 or 1631-661-1278; [www.exxtra.com/fmsh](http://www.exxtra.com/fmsh)

IMAC: Inter-Media Art Center, 370 New York Ave, Huntington 11743; Sat's at 9PM, some folk; 1-516-549-9666; [www.imactheater.org](http://www.imactheater.org)

LITMA % (LI Traditional Music Assn., P.O. Box 991, Smithtown, N.Y. 11787). Smithtown events at Smithtown Historical Society Brush Barn, 211 Main St (Rte 25 east of Rte 111), *Smithtown*: Community contra dances 8pm 2<sup>nd</sup> and 4<sup>th</sup> Fridays (631-369-7854); English Country Dance Beginner Workshop usually 1<sup>st</sup> Sunday 2pm (631- 673-5177); English Country Dance usually 3<sup>rd</sup> Sunday 2pm (631-757-3627); Orchestra rehearsals (516-433-4192); Music workshops and slow jams (631-427-7542); Concerts occasional 3<sup>rd</sup> Saturday 8pm (preceded by 6pm pot-luck) (631-757-5980); Annual Fiddle, Dance and Song Festival in August (631-864-4601). *Other locations*: Contra dances 8pm 1<sup>st</sup> Friday Christ Church, 61 East Main St., Oyster Bay (631-864-4601); Contradances 8pm 1<sup>st</sup> Saturday Watermill Community Center (631-725-9321); Sacred Harp Sing 1pm 2<sup>nd</sup> Sunday Huntington Station and 4<sup>th</sup> Sunday in Wading River (631-325-8272); House Song Circle 2<sup>nd</sup> Saturday (631-581-5063). Info about events or LITMA: [www.LITMA.org](http://www.LITMA.org)

Our Times Coffeehouse, Ethical Humanist Society, 38 Old Country Rd, Garden City (2 mi west of Meadowbrook Pkwy, beside water tower); monthly except July & Aug., 8Pm; \$10 (\$8 child/student); 1516-541-1006; <http://www.ourtimescoffeehouse.org/>.

Planting Fields Arboretum, Oyster Bay; 7-8pm; reserved tent seating: \$25-60; lawn seating: \$20-30; [www.FOTApresents.org](http://www.FOTApresents.org) or call (516) 922-0061

Song Box, 14 Barkers Lane, Huntington Station, L.I., NY 631-385-7545; 5 blocks East of Route 110 on Jericho Tpke (Route 25); Turn right (South) onto Barkers Lane; fourth Sat except Winter

**Long Island Repeating Events** are in the repeating events section.

**UPSTATE NEW YORK** (note: 845 is the new area code for all 914 but Westchester. also look at: The Hudson Valley Calendar: <http://www.HVmusic.com/cgi-bin/getevent.pl?bydate=yes&fordays=12>

*Fiddle & Dance News* is a bi-monthly dance & music calendar for the Mid-Hudson region; \$6 to 987 Rte. 28A, West Hurley 12491; 845-338-2996.

Listen Inn; Friends of Music in Middletown, Inc; Fri & Sat 8pm; Sun 2pm; Mansion series, Oorrison Hall (some larger cnerts in the Theater), Orange Co. Comm. Coll, Middletown, 845-342-0878; \$15-20; Email: [listenin@warwick.net](mailto:listenin@warwick.net); <http://www.friendsofmusic.net>

Mainstage Coffeehouse, Westchester Arts Council, 31 Mamaroneck Ave, White Plains; 8Pm; refreshments avail; 914-949-2913; [www.TheMainstage.org](http://www.TheMainstage.org); Shows at Irvington Town Hall (914) 591-6602) and The Paramount Centre for the Arts (Peekskill) (914) 739-2333

Rosendale Cafe, 434 Main St, Rosendale 12472; 845-658-9048; 9pm cover & min; [www.rosendalecafe.com](http://www.rosendalecafe.com)

Towne Crier Cafe, 62 route 22, Pawling 12564; 845-855-1300; [www.townecrier.com](http://www.townecrier.com); reservations suggested; Fri & Sat, 9Pm; Sun-Thur, 8Pm; open mic,\$4, 7:30PM (5-7PM sign up); \$15-25

Turning Point, 468 Piermont Ave., Piermont, Rockland County (off rte 9W south of Nyack); (845) 359-1089; food avail; [www.piermont-ny.com/turning](http://www.piermont-ny.com/turning)

Warwick Valley Winery, 114, Little York Road, Warwick, Uncorked And Unplugged In The Orchard Concerts; Sat & Sun, 2-5pm plus special concerts. <http://www.wvwinery.com/>

*Calendar Listings information Continued from previous page*

unplugged\_01.html; (845) 258-4858

**NEW JERSEY** (Folk Project/FMSNNJ/Hurdy Gurdy Folk Phone: 973-822-1313)

Lil's Song Circle: 8pm on 2nd Fri at various locations in NY & northern NJ. General info: Jerry Epstein, 201-384-8465.

Minstrel Coffeehouse; Fri, 8:30pm, \$5 (2nd Fri, open stage); Morristown Unitarian Fellowship, 21 Normandy Heights Rd, Morristown, NJ. (Run by Folk Project %, POB 41, Mendham 07945; 973-335-9489; <http://www.folkproject.org>; Sat concert info: 973-335-9489

Outpost in the "Burbs" Coffeehouse (singles & couples over 20) First Congregational Church, 40 S. Fullerton Ave, Montclair 07042 (enter rear of building); twice monthly; 9pm; Steve or Rich, 973-744-6560; [www.outpostintheburbs.org](http://www.outpostintheburbs.org)

Sanctuary Concerts, Some Sat's, 8pm at Presbyterian Church of Chatham, 240 Southern Boulevard, Chatham, 1-973-376-4946; [www.sanctuaryconcerts.org](http://www.sanctuaryconcerts.org)

**CONNECTICUT** (Southern New England-WWUH FOLKPHONE: 860-768-5000)

Mystic Seaport Museum, Rte 27, Mysticinfo. 1-203-572-0711

Sounding Board C.H., Universalist Church of West Hartford, 433 Fern St., West Hartford CT; Sat's, 8pm, \$10, (closed July & August) info: Brent Hall, 460 Wallingford Rd, Cheshire, CT 06410; 203-272-8404; <http://folknotes.org>.

Univ. of Hartford - (W)Wilde Auditorium or (M)Millard Auditorium, 200 Bloomfield Ave. (Rt. 189), W. Hartford; Fridays 7:30; 1-860-768-4228 or 1-800-274-8587

Vanilla Bean Café, corner of 44, 169 & 97, Pomfret; 8pm Sat eve's plus first Fri open mike, 860-928-1562; [www.thevanillabeancafe.com](http://www.thevanillabeancafe.com); \$5-15

Additions and Corrections to this list are most welcome! Send all location info to: Don Wade, 35-41 72nd St, Jackson Heights 11372; 1-718-426-8555, <WadeD@ncc.edu>.

---

## **SURVEY OF FESTIVALS**

Compiled by John Mazza

Send info for future festivals to me at 50 Plum Tree Lane, Trumbull CT 06611, [jmazza@snet.net](mailto:jmazza@snet.net).

\*\* Bluegrass festivals – Only a few listed here. Contact: Tri-State Bluegrass Association for Band and Festival Guide, c/o Erma Spray, RR1, Box 71 Kahoka, MO 63445, 573-853-4344. <edspray@marktwain.net> <http://k0bkl.org/tristate.htm>

\*\* Dulcimer festivals – Only a few listed here. Contact: Dulcimer Players News, P. O. Box 2164, Winchester, VA 22604. <dpn@dpnews.com> <http://www.dpnews.com/>

### **ARKANSAS**

++ **Ozark Folk Center** – Mountain View. A wide range of folk lore, music and dance events throughout the year. A few 2005 events will be:

- June 7-11 Autoharp Jamboree, Workshops, Mini-Concerts
- Jun 14-17 Autoharp Advanced Workshops
- Jun 21-24 Autoharp Beginner Workshops
- Jun 28-Jul 1 Autoharp Intermediate Workshops
- Jul 27-30 Mountain Dulcimer Workshops
- Aug 1-4 Hammered Dulcimer Workshops
- Aug 13 Ralph Stanley Concert
- Aug 16-20 Old-time String Band Week
- Aug 30-Sep 3 Clawhammer Banjo Weekend
- Sep 17 Iris DeMent Concert

Info: PO Box 500, Mountain View AR 72560, 870-269-3851, [www.ozarkfolkcenter.com](http://www.ozarkfolkcenter.com), <[ozarkfolkcenter@arkansas.com](mailto:ozarkfolkcenter@arkansas.com)>

*Festivals - Continued from previous page*

**CALIFORNIA**

++ Jun 24-26 **Summer Solstice Folk Music, Dance and Storytelling Festival** – Calabasas. Larry Unger, Drew Smith, Dan Crow, Liz Carroll, Lissa Schneckenburger, many more. Info: 4401 Trancas Place, Tarzana CA 91356-5399, 818-817-7756, <info@ctmsfolkmusic.org> www.ctmsfolkmusic.org

++ Jul 30-Aug 7 **Lark Camp World Music and Dance** – Mendocino Woodlands. Camp Setting. Workshops in music and dance from all over the world. Info: PO Box 1176, Mendocino CA 95460, 707-964-4826, <registration@larkcamp.com> www.larkcamp.com

++ Aug 14-21 **Middle Eastern Music and Dance Camp** – Mendocino Woodlands. Music and dance of Asia Minor, North Africa and the Middle East. Instruction in classical and folk instruments, performances, ethnic cuisine. Instrument making, dance and singing workshops. Info: 3244 Overland Ave. No. 1, Los Angeles CA 90034, 310-838-5471, <joshkun@middleeastcamp> www.middleeastcamp.com

**COLORADO**

++ **Rocky Mountain Fiddle Camp Weeks** – Outside Denver. Concerts, classes, jam sessions, contra dances and more.

-Aug 7-14 Ken Perlman, Jacqueline Schwab, Tom, Brad & Alice, Larry Edelman and more.

-Aug 14-21 Abby Newton, Ed Miller, Alan Jabbour, Kim Robertson, Angus Grant and more.

Info: 4785 East Amherst Ave., Denver CO 80222, 303-753-6870, <MFLuther@aol.com> www.rmffiddle.com

**CONNECTICUT**

++ Jun 2-5 **Strawberry Park Bluegrass Festival** – Preston. Rhonda Vincent, Ricky Skaggs, Hot Rize, many more. Info: 42 Pierce Road, Preston CT 06365, 860-886-1944, 888-794-7944, <camp@strawberrypark.net> www.strawberrypark.net.

++ Jun 9-12 **Blast from the Bayou Cajun Festival** – Strawberry Park, Preston. Geno Delafosse, Steve Riley and the Mamou Playboys, Chris Ardoin, Jesse Lege and Bayou Brew, Peter Rowan, Nathan & the Zydeco Cha-Chas and more. Info: 42 Pierce Road, Preston CT 06365, 860-886-1944, 888-794-7944, <camp@strawberrypark.net> www.strawberrypark.net.

++ Jun 9-12 **Sea Music Festival** – Mystic Seaport. Sea music workshops and demonstrations on board ship and around the grounds, Music of the Sea Symposium (Sat. a.m.). Tommy Makem, Georgia Sea Island Singers, Mike Seeger, Le Vent du Nord, Louis Killen, Jeff Warner, Jorge Job Johnson Girls, many more. Info: PO Box 6000, Mystic CT 06355-0990, 860-572-5315, 888-9SEAPORT, <visitorservices@mysticseaport.org> www.mysticseaport.org

++ Jun 10-12 **Great Connecticut Cajun/Zydeco Music & Arts Festival** – Moodus. Keith Frank, Basin Brothers, Bayou Highway, Creole Connection, Magnolia and more. Cajun food, horseback riding and outdoor sports in a resort setting. Info: 121 Leesville Rd., P. O. Box 415, Moodus CT 06469, 800-225-9033, www.sunriseresort.com

++ Jun 17-19 **Fairfield County Irish Festival** – Trumbull (Note new location). Cherish the Ladies, John Whelan, The Shamroques, Liz McNicoll and more. Info: 74 Beach Rd., Fairfield, CT 06824, <festival2005@irishfestival.org> www.irishfestival.org

++ Aug 4-7 **Podunk Bluegrass Festival** – East Hartford. Doc Watson, Vassar Clements, Too Blue, Rhonda Vincent and more. Info: 50 Chapman Pl., East Hartford, CT 06108, 860-291-7350, <crmoos@ci.east-hartford.ct.us> www.podunkbluegrass.net

++ Nov 4-6 **NOMAD Festival** of traditional music and dance – Wilbur Cross High  
*Continued on next page*

## *Festivals - Continued from previous page*

School, New Haven. Concerts, instrument workshops, songswaps, contras, squares, international, English, Scottish and other dancing, family activities, folk bazaar and more. Info: 203-372-3890, <[nomadfest@nomadfest.org](mailto:nomadfest@nomadfest.org)> [www.nomadfest.org](http://www.nomadfest.org)

### **KANSAS**

++ Sep 14-18 **Walnut Valley Festival** – Winfield. John McCutcheon, Roz Brown, Tom Chapin with Michael Mark, Marley's Ghost, Sons of the San Joaquin, Andy May, many more. Info: P. O. Box 245, Winfield KS 67156, 620-221-3250, <[hq@wvfest.com](mailto:hq@wvfest.com)> [www.wvfest.com](http://www.wvfest.com)

### **KENTUCKY**

++ Jun 12-18 **Appalachian Family Folk Week** – Hindman. Traditional Appalachian music, dance, crafts and storytelling. Info: Hindman Settlement School, Rte. 160, P.O. Box 844, Hindman KY 41822, 606-785-5475, <[info@hindmansettlement.org](mailto:info@hindmansettlement.org)> [www.hindmansettlement.org](http://www.hindmansettlement.org)

### **MAINE**

++ Jun 17-19, Aug 7-12 **Maine Fiddle Camp** – Montville. Music camp for all ages and levels. Dance music in Scots-Irish, French & Scandinavian traditions as they've evolved in Maine. Fiddle, piano, guitar, banjo, bones, and accordion classes and workshops with performances, jams, song swaps, dancing, swimming. Info: 116 Pleasant Cove Drive, Woolwich ME, 04579, 207-443-5411, <[protsik@gwi.net](mailto:protsik@gwi.net)> <http://home.gwi.net/fiddle/>

++ Aug 21-27 **Meadowlark Music Camp** – Washington. Jerry Bryant, Anne Dodson, Cindy Kallet, Ken Kolodner, Keith Murphy, Richie Stearns, Grey Larsen, Curt Stager, Becky Tracy and more. Info: 25 Columbia Drive, Amherst MA 01002, 413-256-6606, <[jerrybryant@kp.org](mailto:jerrybryant@kp.org)> [www.meadowlarkmusiccamp.com](http://www.meadowlarkmusiccamp.com)

++ Aug 26-28 **American Folk Festival** – Bangor. Le Vent du Nord, Del McCoury, Steve Riley & the Mamou Playboys, Paul Dahlin & the Äkta Spelmän, Danú and more. Info: 30 Main St., Suite 220, Bangor ME 04401, 207-992-2630, <[info@americanfolkfestival.com](mailto:info@americanfolkfestival.com)> [www.americanfolkfestival.com](http://www.americanfolkfestival.com)

### **MARYLAND**

++ Jul 9-10 **Common Ground on the Hill** – Westminster. Walt Michael, Rick Lee, Tom Chapin, Joe Hickerson, Steve Gillette & Cindy Mangsen, Bob Zentz, Bill Spence, Bob Franke, Cosy Sheridan, many more. Info: McDaniel College, 2 College Hill, Westminster MD 21157, 410-857-2771, <[cground@qis.net](mailto:cground@qis.net)> [www.commongroundonthehill.com](http://www.commongroundonthehill.com)

### **MASSACHUSETTS**

++ Jun 17-19 **CDS Boston Centre Weekend at Pinewoods** – Plymouth. Info: P.M.B 282, 1770 Massachusetts Ave., Cambridge, MA 02140, 781-483-3323, <[bennettm@comcast.net](mailto:bennettm@comcast.net)> [www.cds-boston.org](http://www.cds-boston.org)

++ Jun 23-27, Jun 27-30 **Folk Arts Center at Pinewoods** – Plymouth. International folk dance and music. Info: FACONE, 42 West Foster Street, Melrose MA 02176, 781-662-7475, <[fac@facone.org](mailto:fac@facone.org)> [www.facone.org/](http://www.facone.org/)

++ Jun 30-Jul 4 **CDS Boston Centre Weekend at Pinewoods** – Plymouth. Info: Pete Masters, 781-316-1520, <[peter@petermasters.com](mailto:peter@petermasters.com)> [www.cds-boston.org](http://www.cds-boston.org)

++ Jul 4-8 **English Scottish Session at Pinewoods** – Plymouth. English, Scottish dance, band workshops. Info: Marianne Taylor, 603-463-7771,

*Festivals - Continued from previous page*

<taylorgorman@juno.com> www.cds-boston.org

++ Jul 2-3 **Greater New Bedford Summerfest** – New Bedford Historic District. Scott Ainslie, Jake Amerding, Kevin Burke, Judy Cook, Catie Curtis, Jeff Davis, Paul Geremia, Vance Gilbert, Christine Lavin, Joel Mabus, Lisa Moscatiello, The Nields, John Renbourn & Jacqui McShee, John Roberts, Susan Werner, John Whelan, Brooks Williams and more. Info: 508-999-5231 <helene@barrel-of-music.com> <http://webpages.charter.net/barrel-of-music/summfst.htm>

++ Jul 8-11, Jul 11-17 **Royal Scottish Country Dance Society Sessions at Pinewoods** – Plymouth. Scottish dance, band workshops. Info: Bob Littlehale, 781-324-2708, <rlittlehale@arczip.com> www.rscdsboston.org

++ Jul 15-16 **Green River Festival** – Greenfield. Diverse musical styles and hot-air balloons. Donna the Buffalo, The Duhks, Steve Earle, Tracy Grammer, Zydecats, Anais Mitchell, the Mammals and more. Info: P. O. Box 898, Greenfield MA 01302, 413-773-5463, <mariann@franklincc.org> www.greenriverfestival.com

++ Jul 29-31 **Lowell Folk Festival** – Music and dance performances on six outdoor stages, ethnic food, crafts, more. La Bouttine Souriante, Tatiana Sarbinska, Mamadou Diabate, Solás, Susan Watts and the Fabulous Speilkehs, La Carácuaros, many more. Info: 67 Kirk Street, Lowell MA 01852, 978-970-5000, <audrey\_ambrosino@nps.gov> www.lowellfolkfestival.org

++ **Country Dance and Song Society at Pinewoods** – Pinewoods Camp, Plymouth.

-Jul 16-23 Early Music Week, Leader: Gene Murrow

-Jul 23-30 American Dance & Music Week, Leader: Susan Kevra

-Jul 23-30 Square Dance Callers Course, Leader: Kathy Anderson

-Jul 30-Aug 6 Campers Week, Leader: Kathy Reid-Naiman

-Jul 30-Aug 6 English Dance Leaders Course, Leader: Scott Higgs

-Aug 6-13 English and American Dance Week, Leader: Rick Mohr

-Aug 6-13 American Dance Musicians Course, Leaders: Keith Murphy &

Becky Tracy

-Aug 13-20 English Dance Week, Leader: Barbara Finney

-Aug 13-20 English Dance Musicians Course, Leader: Jacqueline Schwab

-Aug 20-27 Family Week, Leaders: Andy & Robin Davis

-Aug 27-Sep 3 Folk Music Week, Leader: Andy Cohen

Info: CDSS, PO Box 338, Haydenville MA 01039-0338, 413-268-7426, ext. 3, fax: 413-268-7471, <[camp@cdss.org](mailto:camp@cdss.org)> [www.cdss.org/](http://www.cdss.org/)

++ Aug 6-13 **Boston Harbor Scottish Fiddle School** – Boston. Hanneke Cassel, Pete Clark, Jerry Holland, Laura Risk. Info: FACONE, 42 West Foster Street, Melrose MA 02176, 781-662-7475, <[fac@facone.org](mailto:fac@facone.org)> <http://scottishfiddle.org>

++ Sep 3-6, **Labor Day Weekend at Pinewoods** – Plymouth. Info: CDS Boston Centre, P. M. B. 282, 1770 Massachusetts Ave, Cambridge MA 02140, 781-662-6710, www.cds-boston.org

++ Sep 9-11, Sep 16-18 **Pinewoods Camp Work Weekends** – Plymouth. Info: 80 Cornish Field Rd., Plymouth MA 02360, 508-224-4858, <manager@pinewoods.org> [www.pinewoods.org/FallWork.shtml](http://www.pinewoods.org/FallWork.shtml)

++ Sep 24-25 **Boston Folk Festival** – UMB Campus. Guy Davis, Ruthie Foster, Tish Hinojosa, Chris Smither, Janis Ian, Lori McKenna, Olabelle, Annie Gallup, Alastair Mook & Pastures of Plenty, Modern Man, David Massengill, Maria Sangiolo, Cosy Sheridan, Work of the Weavers and more. Info: Umass Boston 100 Morrissey Blvd, Boston MA 02125, 617-287-6911, <folkfest@umb.edu> www.bostonfolkfestival.org

++ Sep 16-18 **Northeast Squeeze-In** – Bucksteep Manor, Washington. Festival for

*Festivals - Continued from previous page*

squeezebox enthusiasts. Concert & Contra Dance on Sat night, Limerick Contest, Museum of Curious and Bizarre Squeezeboxes. Info: The Button Box, P. O. Box 372, Sunderland MA 01375-0372, 413-665-7793, <squeeze@buttonbox.com>  
[www.buttonbox.com/s-i.html](http://www.buttonbox.com/s-i.html)

++ Oct 8-10 **FSSGB Fall Getaway Weekend** – Charlton. Staff list unavailable at press time. Info: Marilyn Levin, 51 Dudley St., Arlington MA 02476, 781-316-2018, <MarilynL@alumni.neu.edu> [www.fssgb.org/fssgtwy.html](http://www.fssgb.org/fssgtwy.html)

**MICHIGAN**

++Aug 12-14 **Great Lakes Folk Festival** – East Lansing. A fusion of arts fair, county fair, music festival, living museum and more. Free Admission. Lee Murdock, Steve Riley & the Mamou Playboys, Georgia Sea Island Singers, Téada, many more. Info: 517-432-3357, <pr@museum.msu.edu> [www.greatlakesfolkfest.net](http://www.greatlakesfolkfest.net)

++ Sep 9-11 **Wheatland Festival** – Remus. Le Vent du Nord, Pierce Pettis, Laurie Lewis, The Wilders, Maria Muldaur and more. Info: P. O. Box 22, Remus MI 49340, 989-967-8561, [www.wheatlandmusic.org](http://www.wheatlandmusic.org)

**NEWHAMPSHIRE**

++ **91.9 FM Summer Acoustic Music Weeks** – Center Harbor.

-Jul 17-23 Workshops in various music and song topics with Rolly Brown, Kate Campbell, Pat Donohue, John Doerschuk, Mark Erelli, Lorraine & Bennett Hammond, Bill Staines and more.

-Aug 21-27 Workshops in various music and song topics with Guy Davis, Bob Franke, Martin Grosswendt, The Kenndys, John Kirk, Trish Miller, Sloan Wainwright and more.

Info: Dick Pleasants, 91.9FM Umass Boston 100 Morrissey Blvd, Boston MA 02125, 617-287-6901, <dick.pleasants@umb.edu> [www.umb.org/samw/index.htm](http://www.umb.org/samw/index.htm)

++ **Country Dance and Song Society at Ogontz Camp** - Lyman.

-Jul 9-16 Family Week 1, Leaders: Anne Goodwin & Dave Langford

-Jul 9-16 Teacher Training Course, Leader: Jane Miller

-Jul 30-Aug 6 Family Week 2, Leader: Merle Davis

Info: CDSS, PO Box 338, Haydenville MA 01039-0338, 413-268-7426, ext. 3, fax: 413-268-7471, <[camp@cdss.org](mailto:camp@cdss.org)> [www.cdss.org](http://www.cdss.org)

**NEWYORK**

++ Jun 18-19 **Clearwater's Great Hudson River Revival** – Croton Point Park, Croton. Kim & Reggie Harris, Christine Lavin, Magpie, Mike Seeger, Jay Ungar & Molly Mason, George Wilson Band, Battlefield Band, Black 47, many more. Info: 112 Little Market St., Poughkeepsie NY 12601, 845-454-7673, 800-677-5667, <[office@clearwater.org](mailto:office@clearwater.org)> [www.clearwater.org](http://www.clearwater.org).

++ Jun 24-26 **Old Songs Festival** – Altamont Fairgrounds, Guilderland. Arrogant Worms, Lou & Peter Berryman, Alistair Brown, Michael Cooney, Guy Davis, Bob Franke, Sara Grey & Kieron Means, Ginny Hawker & Tracy Schwarz, Herdman, Hills & Mangsen, David Kaynor, Walt Michael & Company, Bruce Molsky, Nightingale, The Extended Paton Family, John Roberts, Danny Spooner, Två, John Whelan Band, many others. Info: PO Box 399, Guilderland NY 12084, 518-765-2815, <[oldsongs@oldsongs.org](mailto:oldsongs@oldsongs.org)> [www.oldsongs.org](http://www.oldsongs.org)

++ **Ashokan Fiddle and Dance Camp** weeks

-Jun 19-25 Western & Swing Week

-Jul 24-30 Northern Week

-Aug 14-20 Southern Week

*Festivals - Continued from previous page*

Info: Box 49, Saugerties NY 12477, 845-246-2121, [www.ashokan.org](http://www.ashokan.org)

++ Jul 14-17 **Grey Fox Bluegrass Festival** – Ancramdale. Dry Branch Fire Squad, David Grisman Quintet, Seldom Scene, Doyle Lawson & Quicksilver, Sam Bush, many more. Info: P. O. Box 535, Utica NY 13503-0535, 888-946-8495, <GreyFoxOffice@aol.com > [www.GreyFoxBluegrass.com](http://www.GreyFoxBluegrass.com)

++ Jul 10-16 **Catskill Irish Arts Week** – East Durham. Workshops in folk music, dance song, language and history, concerts and ceilis. Maeve Donnelly, Micheal O’Raghallaigh, Edel Fox, Tim Dennehy, Fr. Charlie Coen, Billy McComiskey, Tony DeMarco, many others. Info: PO Box 189, East Durham NY 12423, 800-434-3378, <[irish@francomm.com](mailto:irish@francomm.com)> [www.east-durham.org](http://www.east-durham.org)

++ Jul 21-24 **Falcon Ridge Folk Festival** – Hillsdale. Dar Williams, Ani DiFranco, Chris Smither Tracy Grammer, Susan Werner, Nightingale, many more. Info: 74 Modley Rd., Sharon CT 06069, 860-364-0366, <[info@FalconRidgeFolk@aol.com](mailto:info@FalconRidgeFolk@aol.com)> [www.FalconRidgeFolk.com](http://www.FalconRidgeFolk.com)

++ Aug 6-12 **SummerSongs** – Ashokan. A summer camp for songwriters. Julie Gold, Anne Hills, Sloan Wainwright, Eric Garrison, others. Info: P. O. Box 803 Saugerties NY 12477, 845-246-0223, <[info@summersongs.com](mailto:info@summersongs.com)> [www.summersongs.com](http://www.summersongs.com)

++ Sep 10-11 **Colorscape Chenango Arts Festival** – Norwich. Free festival of arts and music. Fred Eaglesmith, Susan McKeown & the Chanting House, Sloan Wainwright, Mustard’s Retreat, Brooks Williams, Full Frontal Folk and more. Info: P. O. Box 624, Norwich, NY 13815, 607-336-3378, <[colorscape@mail.norwich.net](mailto:colorscape@mail.norwich.net)> [www.colorscape.org](http://www.colorscape.org).

**NORTH CAROLINA**

++ **John C. Campbell Folk School** – Brasstown. Year-round school of folk arts handcrafts, music and dance, featuring dozens of weeklong classes and workshops and some weekends. A few 2005 music sessions are:

-Jun 12-18 Native American Flute – Billy Whitefox & Linda Prejeant

-Jun 26-Jul 2 Continuing Folk Harp – Lorinda Jones

-Jul 8-10 Musical Saw – Ivan Stiles

-Jul 10-16 Dance Musicians’ Week – Susan Conger, Peter Siegel, David Kaynor & Susie Secco

-Jul 24-30 Mountain Dulcimer Building – John Huron

-Aug 26-28 Beginning Mountain Dulcimer – Anne Lough

-Aug 28-Sep 3 Beginning Hammered Dulcimer – Anne Lough

Many of the same and similar subjects are covered in other weeks too numerous to list here, continuing through December. Also featured are classes and workshops in crafts and nature study. Info: One Folk School Road, Brasstown NC 28902-9063, 800-FOLK-SCH, [www.folkschool.org](http://www.folkschool.org)

++ **Swannanoa Gathering** – Warren Wilson College, Asheville. Weeklong classes/workshops. 2005 highlights include:

-Jul 3-9 Dulcimer Week, Sing & Swing Week

-Jul 10-16 Celtic Week

-Jul 17-23 Old-Time Music & Dance Week, Performance Lab

-Jul 24-30 Contemporary Folk Week, Fiddle Week, Guitar Week

Info: PO Box 9000, Asheville NC 28815-9000, 828-298-3434, <[gathering@warren-wilson.edu](mailto:gathering@warren-wilson.edu)> [www.swangathering.com](http://www.swangathering.com)

**PENNSYLVANIA**

++ Aug 26-28 **Philadelphia Folk Festival** – near Schwenksville. Arlo Guthrie, Emmylou Harris, Artisan, Glengary Boys, Buddy Miller, many more. Info: 7113 Emlen St.,



*Festivals - Continued from previous page*

Philadelphia PA 19119, 215-242-0150, 800-556-3655, <pfs@pfs.org> www.folkfest.org

++ Oct 21-23 **NYPFMC Fall Folk Music Weekend at Kutz Camp**, Warwick. See Newsletter for details.

**RHODE ISLAND**

++ Aug 5-7 **Newport Folk Festival** – Newport. Performer list unavailable at press time. Info: P. O. Box 605, Newport RI 02840, 401-847-3700, <info@fpiny.com> www.newportfolk.com

++ Sep 2-4 **Rhythm & Roots Festival** – Charlestown. La Bouttine Soriente, April Verch, Magnolia, Slaid Cleaves, Steve Riley and the Mamou Playboys Geno Delafosse & French Rockin' Boogie and more. Info: P. O. Box 535, Utica NY 13503, 888-855-6940, 315-738-0356 <rhythmtix@aol.com> www.rhythmandroots.com

**TEXAS**

++ Through Jun 12 **Kerrville Folk Festival** – Kerrville. Austin Lounge Lizards, Cathy Fink & Marcy Marxer, Vance Gilbert, Eliza Gilkyson, Groovelily, Arlo Guthrie, Kate McDonnell, Anais Mitchell, Tom Russell, Josh White, Jr., Glen Yarbrough and the Folk Reunion, Peter Yarrow, dozens more. Info: PO Box 291466, Kerrville TX 78029, 830-257-3600, <info@kerrville-music.com> www.kerrvillefolkfestival.com

**VERMONT**

++ Jun 9-12 **Roots on the River** – Bellows Falls. Fred Eaglesmith, Gandalf Murphy and the Slambovian Circus of Dreams, Lynn Miles, Mary Gauthier, Guy Davis, The Mammas and more. Info: P. O. Box 653, Bellows Falls, VT 05101, <flyradar@sover.net> www.rootsontheriver.com

++ Jun 12-18 **Northeast Heritage Music Camp** – Johnson. New camp this year. Workshops in Cape Breton Fiddle and Piano, Québécois Fiddle and Accordion, New England and Appalachian Fiddle, Contra Dance Calling and more. Info: NHMC, 130 High St., Leominster MA 01453-2846 <info@NortheastHeritageMusicCamp.com> www.langston.com/NHMC/

++ Jul 10-16 **Middlebury Festival on the Green** – Middlebury. The Arrogant Worms, The Boogaloo Swamis, Cathy Fink & Marcy Marxer, King Wilkie, Anais Mitchell and more. Info: P. O. Box 451, Middlebury VT 05753, 802-388-0216, <festival@festivalonthegreen.org> www.festivalonthegreen.org

++ Aug 5-7 **Champlain Valley Folk Festival** – Kingsland Bay State Park, Ferrisburg. Jay Ungar & Molly Mason, Liz Carroll & John Doyle, Kim & Reggie Harris, Margaret MacArthur, Magpie, Utah Phillips, many more. Info: 202 Main St., Burlington VT 05401, 877-850-0206, <info@cvfest.org> www.cvfest.org

++ Aug 12-15 **Pipers' Gathering** – Killington (Note new location, different weekend). Workshops, concerts, demos, more. Info: 49 Plains Field Drive, South Dartmouth MA 02948, 207-363-7924, <StebBliven@comcast.net> www.pipersgathering.org

**VIRGINIA**

++ Oct 7-9 **National Folk Festival** – Richmond. Traveling festival of American culture, free to the public. Cephas & Wiggins, Khmer Classical Dance Ensemble, Frank London's Klezmer Brass All-Stars, Mariachi Los Camperos de Nati Cano, The Paschall Brothers, Los Pleneros de la 21, many more. Info: 804-788-6466, <info@nationalfolkfestival.com> www.nationalfolkfestival.com

*Festivals - Continued from previous page*

**WASHINGTON, D. C.**

++ Jun 23-27 and Jun 30-Jul 4 **Smithsonian Folklife Festival** – On the National Mall. Programs featuring over 400 traditional artists – musicians, dancers, storytellers, craftsman, cooks and more. This year's focus: Oman: Desert, Oasis and Sea, Forest Service, Nuestra Musica, Food Culture USA. Info: Smithsonian Institution, 955 L'Enfant Plaza, Washington D. C. 20560, [www.si.edu/folklife](http://www.si.edu/folklife)

**WEST VIRGINIA**

++ Jul 2-9 **Nordic Fiddles and Feet** – Buffalo Gap Camp, near Capon Bridge. Classes and workshops in Scandinavian music and dance, musical instrument workshops. Info: 4401 Alta Vista Way, Knoxville TN 37919, 865-522-0515, <[fiddlesandfeet@aol.com](mailto:fiddlesandfeet@aol.com)> [nordicfiddlesandfeet.org](http://nordicfiddlesandfeet.org)

++ **Country Dance and Song Society at Buffalo Gap** – near Capon Bridge.

-Jul 9-16 English & American Dance Week, Leader: Mary Lea

-Jul 16-23 Family Week, Leaders: Ann Percival & David Cantieni

Info: CDSS, PO Box 338, Haydenville MA 01039-0338, 413-268-7426, ext. 3, fax: 413-268-7471, <[camp@cdss.org](mailto:camp@cdss.org)> [www.cdss.org](http://www.cdss.org)

++ **Augusta Heritage Arts Workshops** – Elkins. Summer session features theme weeks featuring classes in crafts, dance, music and folklore. 2005 highlights include:

-Jul 10-15 Cajun/Creole Week, Guitar Week

-Jul 17-22 Blues Week, Swing Week

-Jul 24-29 Irish Week

-Jul 31-Aug 5 Bluegrass Week, Family Week

-Aug 7-14 Old-Time Week, Dance Week, Vocal Week

-Oct 23-30 October Old-Time Week

-Aug 12-14 Augusta Festival.

Info: Davis & Elkins College, 100 Campus Drive, Elkins WV 26241, 304-637-1209, 800-624-3157, <[augusta@augustaheritage.com](mailto:augusta@augustaheritage.com)> [www.augustaheritage.com](http://www.augustaheritage.com)

**WISCONSIN**

++ Aug 26-28 **Great River Folk Festival** – La Crosse. Performer list unavailable at press time. Info: P. O. Box 1434, LaCrosse WI 54602, 608-784-3033, <[grff@juno.com](mailto:grff@juno.com)> [www.viterbo.edu/personalpages/faculty/rruppel/fest.html](http://www.viterbo.edu/personalpages/faculty/rruppel/fest.html)

**CANADA**

++ Jul 8-10 **Mariposa Folk Festival** – Orillia, ON. Gordon Lightfoot, The Arrogant Worms, Stacey Earle, Fred Eaglesmith and more. Info: Box 383, Orillia ON L3V 6J8 CANADA 705-329-2333, <[info@mariposafolk.com](mailto:info@mariposafolk.com)> [www.folk-festival.org](http://www.folk-festival.org)

++ Aug 4-7 **Old-Time Fiddle Championship** – Shelburne, ON. Workshops, Concerts, Arts & Crafts, Fiddle Contest. Info: Shelburne Rotary Club, PO Box 27, Shelburne ON L0N 1S0, CANADA, 519-925-3551, <[cindy.sabo@sympatico.ca](mailto:cindy.sabo@sympatico.ca)> [www.shelburnefiddlecontest.on.ca](http://www.shelburnefiddlecontest.on.ca)

++ Aug 10-15 **The Woods Music and Dance Camp** – Lake Rousseau. Workshops in Banjo, Fiddle, Guitar, Concertina, Mandolin, Percussion, Dance and singing. Info: 18 Simpson Avenue, Toronto, ON M4K 1A2, CANADA, 416-461-1864, [www.mgl.ca/~jhcoble/thewoods/thewoods.html](http://www.mgl.ca/~jhcoble/thewoods/thewoods.html)

++ Aug 19-21 **Summerfolk Music & Crafts Festival** – Owen Sound, ON. Garnet Rogers, Artisan, Trout Fishing in America, Eliza Gilkyson, Tanglefoot, Ian Tamblyn, James Gordon, Mark Reeves and more. Info: P. O. Box 521, Owen Sound, ON N4K 5R1 CANADA, 519-371-2995, <[gbfs@bmts.com](mailto:gbfs@bmts.com)> [www.summerfolk.org](http://www.summerfolk.org)

# Country Dance & Song Society of America Folk Music Week at Pinewoods Camp

A week of deep involvement in the finest traditional music, song, and dance  
in a setting of unparalleled natural beauty

## August 27- September 3, 2005

Andy Cohen, Program Director Finest Country Blues  
Jerry Epstein, Unaccompanied singing, Interviewer and  
accompanist for John Langstaff

Kevin Henry, Among the finest of Chicago Irish source  
musicians; flute, whistle, pipes, Sean Nos singing  
Keith Kendrick, English traditional song, folklore, concertina  
John Langstaff, legendary singer, teacher, bearer of history  
Seth Tepfer, Atlanta's Dance Magician, caller extraordinaire  
Gail Williams, Appalachian ballad tradition, clawhammer banjo  
Judy Luis-Watson, Barrelhouse piano, blues, gospel, power singer

Paul Watson, Mouth harp, blues, gospel and more.  
Smashing Bumpkins:

Howie Bursen, Clawhammer banjo, guitar, vocal  
Jeff Davis, fiddle, banjo, guitar, mandolin, traditional song  
Martin Grosswendt, fiddle, banjo, guitar, blues, Cajun, Creole

The Youngers of Zion:

Henry Sapoznik, Klezmer maestro extraordinaire, founder of KlezKamp,  
historical Yiddish material  
Cookie Segelstein, Klezmer violin, viola.

Mark Rubin, Bass, tuba

*Concerts, Workshops, Presentations of Tradition, Dancing, Swimming, Camper Songswaps,  
Concerts and workshops, informal music making at all times of the day and night.*

INFO and REGISTRATION: Country Dance & Song Society: <http://www.cdss.org>

Phone: 413-268-7426

**Beethoven Festival**

**2005**

June 12, Noon – 7 p.m.

Featuring Camerata New York Orchestra, Richard Owen, Jr., conductor

Tickets \$35 General Admission

**Long Island Summer Festival**

**2005**

Saturday, June 18	8:30 p.m.	Seal	Tickets: \$35-\$65
Saturday, June 25	8:00 p.m.	George Benson	Tickets: \$30-\$55
Wednesday, July 6	7:30 p.m.	Donovan	Tickets: \$25-\$45
Saturday, July 16	8:00 p.m.	Bo Diddley, Nellie McKay	Tickets: \$25-\$45
Sunday, July 17	8:00 p.m.	Michael McDonald	Tickets: \$30-\$55
Saturday, July 23	8:00 p.m.	Little Feat	Tickets: \$25-\$40
Saturday, July 30	8:00 p.m.	Nanci Griffith	Tickets: \$30-\$50
Thursday, Aug. 4	7:00 p.m.	John Hiatt & the North Mississippi Allstars	Tickets: \$30-\$45
Wed., Aug. 10	7:00 p.m.	Susan Tedeschi	Tickets: \$30-\$45
Saturday, Aug 20	8:00 p.m.	Latin Jazz Night: Poncho Sanchez Latin Band, Nestor Torres	Tickets: \$25-\$40
Saturday, Aug. 27	7:30 p.m.	Arlo Guthrie & the Mammals "Alice's Restaurant 40 <sup>th</sup> Anniversary Massacre Tour" Sarah Lee Guthrie & Johnny Irion	Tickets: \$25-\$45

**North Fork Bank Jazz Festival**

**2005**

Saturday, Aug. 13	8:00 p.m.	Roberta Flack, Gino Sitson 4	Tickets: \$30-\$55
Sunday, Aug. 14	7:00 p.m.	Trio! Stanley Clarke-Bela Fleck-Jean-Luc Ponty, Ravi Coltrane	Tickets: \$30-\$55

**ALL CONCERTS TAKE PLACE AT  
PLANTING FIELDS ARBORETUM, OYSTER BAY, N.Y**

**"Kids Go Free" sponsored by**



*Artists subject to change. Events Rain or Shine. No Refunds or Exchanges.*

**For tickets and an updated listing, visit [www.FOTApresents.org](http://www.FOTApresents.org) or call (516) 922-0061**

# New York City Labor Chorus

## 7TH Gala Benefit Concert

Peter Schlosser, Conductor  
Dennis Nelson, Accompanist

at

*The Graduate Center, CUNY*  
365 Fifth Avenue at East 34th Street

*Saturday, June 11, 2005*  
7 P.M.

*Come Celebrate the Great Tradition of Labor and Folk Music*

General Admission \$25 Seniors & Unemployed \$15

FOR TICKET INFORMATION 212-929-3232 or Website: [www.nyclc.org](http://www.nyclc.org)



**17th Annual**

**July 21, 22, 23 & 24, 2005**

**Long Hill Farm**

**Rt 23, Hillsdale, NY**

**Tri-State Corner of MA, NY & CT**

**over 50 artists on 4 stages**

**A Four Day Community of Folk Music & Dance  
at the Foot of the Berkshires**

**Mainstage Concerts, Dancing, Camping, Workshops Activities 4 Kids,  
Family Stage, Crafts, International Foods, Accessible & ASL Interpreted**

**Friday Night Summer's Eve Song Swap with Chris Smither,  
Susan Werner, Vamce Gilbert & Tracy Grammer**

**Dar Williams, Ani DiFranco, Acoustic Hot Tuna, The Nields,  
Jesse Colin Young, Eddie From Ohio, Crooked Still, Glengarry Boys,  
Nightingale, Clayfoot Strutters, Eliza Gilkyson, Brave Combo, The Sevens,  
Peter Davis & Lindy Hop Heaven, Arrogant Worms, The Kennedys,  
Modern Man, Redbird, Lil Anne & Hot Cayenne, many others**

**Tickets & Info - 866-325-2744 • [www.FalconRidgeFolk.com](http://www.FalconRidgeFolk.com)**

## **PRENEWAL.**

Your membership expiration date is printed on your newsletter mailing label. If you send in your renewal before you expire, you will save wear and tear on Anne, our Membership Chair, and also save the club the cost of mailing you a reminder. Thank you.

**Fifth Annual Woody Guthrie Birthday Bash  
Round Robin Songfest**

Sunday • July 10, 2005 • 7 to 9 PM

CB's 313 Gallery • 313 Bowery • New York City  
Ethan Miller • Anne Price • Eric Levine • Gina Tlamsa  
Joel Landy • Jessica Feinbloom • Steve Suffet  
\$5 cover lets you stay all evening and hear other acts.

*For info, please call: (212) 677-0455.*

**Housing Needed**

New York City Sacred Harp Singers are hosting an All-Day Singing on August 13, 2005 and we need friendly and hospitable friends to help put up people who will be coming in from out-of-town.

Because of our small apartments and astronomical hotel rates, housing for out-of-town singers will be one of our biggest challenges for this event.

If you can help, please call or email Inga Knets, knetsi@yahoo.com  
1-347-866-6064, or Holly Laws, hlaws@wesleyan.edu; 917.538.5138

**Folk Fone Help  
Wanted**

We need additional people to record folk fone. You need to be comfortable using a computer and able to get into the Club office at your convenience. We work on a rotating schedule and each person records about once every 3 weeks. Contact Don Wade, <WadeD@ncc.edu>, 1-718-426-8555.

**Special Offer for  
Club Members**

**Camsco Music (Dick Greenhaus):**  
If any members buy recordings from Camsco Music via the internet or the toll-free line, 800-548-FOLK, and identify themselves as Pinewoods Club members, Camsco will donate 3% of the gross sales price of recording(s) to the Pinewoods Club.

Camsco carries many traditional and hard-to-find CDs, etc. and can supply recordings that are not in their catalog. Camsco Music, 28 Powell St, Greenwich, CT 06831; <http://www.camsco.com>

**TRIBORO**

**Phyllis Elkind, Evy Mayer  
& Don Friedman**

**Saturday, June 11th  
9:00 PM**

**22 Below Cabaret  
155 E. 22nd Street**

**Admission: \$12.00.  
Refreshments sold.  
Information (212) 228-0750**

Wonderful harmonies! Hear great old-time, new-time, Carter Family, country, Western, bluegrass and beyond.

# Pinewoods Hot Line

Anyone may place Advertisements of 40 words or less (because we use proportional spaced type, please avoid all-caps). RATES: \$10 each Hotline per month (\$5 for members), 1/2 year for \$30 (\$15 for members). Members please include mailing label for discount. (Lost & Found ads are free.)

Send all materials to: Eileen Pentel, 35-41 72nd St, Jackson Heights, NY 11372. We will be happy to accept ads on disk (MS-DOS ASCII format is best but we can deal with others) or by E-mail with the text as part of the message (coincident with mailing your check) to WadeD@ncc.edu. All ads must be **prepaid** make checks payable to: Folk Music Society of N.Y., Inc. (FMSNY). [Last run date is in brackets.]

**Sound reinforcement:** Your program deserves the best, whether it's a concert or a large festival. **Location recording:** Direct to stereo or Digital 8-track recording and editing. Acoustic Folk and Classical are specialties. Collegium Sound, Inc.; Don Wade or Jerry Epstein, 1-718-426-8555 or 1800-356-1779; soundman@computer.org [1-07]

## Guitar Lessons.

If you would like to play better...  
Taught by excellent, patient teacher.  
Jane Babits, (212) 861-7019

[1-07]

**Everybody can Sing**—and I can prove it! For private or group lessons, "...a wonderful, patient, sensitive teacher who makes everyone feel more confident in their abilities."  
Elissa Weiss, 1-212-874-6447. <http://www.everybodycansing.com> [1-07]

**Attorney** with practice in real estate, wills/estates, elder law. Pinewoods member—reasonable rates, confidential. Mariann Perseo, 276 Fifth Ave, Suite 306, NYC, NY 10001, 1-212-684-4289/fax-4299 or [Mperseo@aol.com](mailto:Mperseo@aol.com) [3-06]

**Minstrel Records:** Bob Coltman, David Jones, Jack Langstaff, Almeda Riddle, Frank Warner, Jeff Davis, Jerry Epstein, Dwayne Thorpe, Sonja Savig. On LP, newer releases on CD & cassette. Visit our website at [www.minstrelrecords.com](http://www.minstrelrecords.com) or write for a listing: Minstrel Records, 35-41 72 St, Jackson Hts, NY 11372 [1-06]

**Singing Books/Albums:** Popular *Rounds Galore*, recommended by Pete Seeger and others, plus the great *Rounds Galore...and More CD/cassette* (vol 1 & 2), recommended by Christine Lavin, Peter Schickele, Bob Sherman, Jean Ritchie, Oscar Brand,... Book, \$15 + \$2.50 shipping; CD/cassette, \$15/10 + \$1.50 shipping. Also, rounds book *Sequel* (\$6 + \$1.50); *Sight Singing Guide* (\$2 + \$1.25); *Rise Up Singing* (good price); new Joanne Hammil rounds albums and books, Bob Blue Songbook/albums/video; John Krumm books/CD (rounds, songs); gospel books and more. Sol Weber, 25-14 37th St, Astoria, NY 11103. <[solweber@juno.com](mailto:solweber@juno.com)> Send check, or SASE for info. [2-06x2]

**Country Dance\*New York, Inc.** Sponsoring English and American Country Dancing in New York City for over 50 years. Live music. All dances taught. Beginners & Experienced dancers welcome. No partners necessary. September to June. ENGLISH dancing, Tuesdays, 7:00-10:15 p.m. AMERICAN dancing Saturdays, 8:00 -10:45p.m. (beginner basics at 7:45 p.m.) Metropolitan-Duane Hall, 201 W. 13th St (NW corner of 7th Ave, side entrance). For current information, visit our website: [www.cdney.org](http://www.cdney.org) or call the Dancephone: 1-212-459-4080. [11-05x2]

**Order today**, online or in-store! Critically acclaimed books by author-photographer Stephanie P. Ledgin. *Homegrown Music: Discovering Bluegrass* (Ricky Skaggs foreword) and *From Every Stage: Images of America's Roots Music* (Charles Osgood foreword). Info and personalized copies, visit <http://fiddlingwithwords.com>. Phone 732-699-0665. [1-06]

If you are the proud parent of one of the hotlines above, please check the ending date. If you want it renewed, send in your renewal before the 12th of that month to have it continue in the next month—we do not send out renewal notices. []

---

**The Club's Web Page: [www.folkmusicny.org](http://www.folkmusicny.org)**



Folk Music Society of N.Y., Inc.  
450 Seventh Ave., #972-D  
New York, NY 10123  
212-563-4099  
<http://www.folkmusicny.org>

June 2005  
printed in U.S.A.

## MEMBERSHIP APPLICATION

(For a sample newsletter, write to the Club office—address at left.)

To join (or to renew) and receive the newsletter regularly, mail this to:

**FMC membership, c/o Anne Price,  
80 Knolls Crescent, #2M,  
Bronx, NY 10463; 1-718-543-4971.**

**MAKE ALL CHECKS PAYABLE TO:**

*Folk Music Society of New York, Inc.*

Yearly Dues:

- \$35 individual;  \$50 family/dual;  
 \$20 full-time student/low income  
(please state reason: \_\_\_\_\_)

Two Year dues:

- \$65 individual;  
 \$95 family/dual (one household).

Memberships above include newsletter, free admission to our regular events series and reduced admission to many other events.

Long Distance Membership (more than 50 miles from midtown Manhattan):

- Yearly dues:  \$28 Individual;  
 \$43 family/dual

Includes newsletter, weekend discounts, voting privileges, but not free concerts.

- I wish to be a supporting member, my check includes an additional \$\_\_\_\_\_ over regular dues. (Additional contributions are tax deductible, as permitted by law.)

renewal (exp month: \_\_\_\_\_)

new (How did you first hear about us?  
\_\_\_\_\_)

Name(s): \_\_\_\_\_

Address: \_\_\_\_\_

City: \_\_\_\_\_

State: \_\_\_\_\_ ZIP \_\_\_\_\_

Telephone (\_\_\_\_\_) \_\_\_\_\_

E-Mail: \_\_\_\_\_

For family memberships, please list the names of others in the same household not listed above:

adults: \_\_\_\_\_

children: \_\_\_\_\_

I want to help:

- with the newsletter;  with mailings;  
 post flyers around my neighborhood or on my school or company bulletin board.  
 other \_\_\_\_\_

**FIRST CLASS MAIL**