



Events at a Glance

May

- Mondays: **Irish Music Session. Landmark Tavern, 8-11pm, FTF +**
- Wednesdays: **Sunnyside Folk Club, Sanger Hall, Sunnyside, 8pm, FTF +**
- Fri, 5: **North Sea Gas (hybrid from Old Songs), 7:30pm +**
- Sun, 7: **Sea Chanteys & Maritime Music, FTF at the Seaport, 2pm†**
- Mon, 8: **(Zoom) Board of Directors Meeting, 8pm; see p. 5**
- Sat, 13: **Sam Gleaves + Carrie & Michael Kline; Peoples' Voice Cafe, hybrid, 8pm +**
- Sat, 13 **John McCutcheon: Jackpot!; livestreamed; 7pm +**
- Sat, 13: **Brooklyn Outdoor Song Circle (FTF); 2-4 pm +**
- Sun, 21: **Staten Island hybrid Shanty Sing, 2pm +**

June

- Mondays: **Irish Music Session. Landmark Tavern, 8-11pm, FTF +**
- Wednesdays: **Sunnyside Folk Club, Sanger Hall, Sunnyside, 8pm, FTF +**
- Fri, 2: **Songs of the English Music Hall, a performance-talk with Russ Chandler, house concert; 7:30pm; FTF**
- Sun, 4: **Sea Chanteys & Maritime Music, FTF at the Seaport, 2pm†**
- Sat, 10 **Brooklyn Outdoor Song Circle, FTF; 2-4 pm +**
- Mon, 12: **(Zoom) Board of Directors Meeting, 8pm; see p. 5**
- Sat, 17: **Porch Stomp, FTF; 11am-6pm on Governors Island**
- Sun, 18: **Staten Island hybrid Shanty Sing, 2pm +**

Details on Pages 2-4

(FTF)= Face to Face=in person; hybrid=a FTF event also livestreamed

Table of Contents

FMSNY Events at a Glance.....1	Folk Calendar Listings8
Events Details.....2-4	Folk Calendar Listing Info.11
From The Editor.....4	Folk Music Society Info.....13
Topical Listings of Events.....5	Mark Hamburg Ad14
Rhoda Cohen Obituary.....6	Peoples' Voice Cafe Ad.....14
Toby Fagensen Memorial Info.....7	Pinewoods Hot Lines.....15
T-shirt Ad.....7	Membership Form - Join Us.....16

The Society's Web Page: <http://www.FMSNY.org>
 facebook: <https://www.facebook.com/FMSNY/>

Events Details

(FTF) Irish Traditional Music Session: Mondays, 8-11pm

Tenor banjo, harmonica and fiddle player Don Meade and friends get together every Monday night with a featured performer for an Irish music session in the back room of this historic Hell's Kitchen bar/restaurant. Free admission food and drink are available. Musicians, singers, & listeners welcome. At the Landmark Tavern, 626 11th Ave. (on 46th St) co-sponsored with and led by Don Meade info 212-247-2562 or www.blarneystar.com/. See website for featured performers †

(FTF) Sunnyside Folk Club: Wednesdays; 8pm

The Sunnyside Folk Club (formerly the Sunnyside Singers Club) is a weekly in-person session for people who like to sing. The club meets every Wednesday from 8 to 11 PM in Sanger Hall, an Irish-American pub at 48-20 Skillman Avenue (corner of 49th St.) Sunnyside, Queens. Come bring voices and songs to share. Acoustic instruments also welcome. Traditional songs are especially welcome. About once a month there may be a featured guest performer for part of the evening. No added admission charge, but purchase of food and/or drink expected. And there is a request for a voluntary contribution whenever there is a guest performer. Guest Performers to be announced <https://www.facebook.com/sunnysidefolkclub/> †

(FTF) Sea Chanteys & Maritime Music; Sunday; May 7th; 2pm

South Street Seaport Museum's monthly Sea Chanteys and Maritime Music program, the original NYC chantey sing, continues aboard the Wavertree on the first Sunday of every month. Attendees are invited to sing along, lead a song in the round-robin, or just sit back and listen. Singers of all levels, as well as listeners, are welcome to join in the choruses throughout the event, and lead or request a song in the round-robin. Attendees, before or after the Sing, are invited to enjoy free access to the Seaport Museum galleries at 12 Fulton Street, and visit tall ship Wavertree and lightship Ambrose on Pier 16. The event is FREE, but advance registration is required at <https://southstreetseaportmuseum.org/chanteysing>. South Street Seaport Museum, 212-748-8600 †

(hybrid) North Sea Gas; Friday; May 5th; 7:30pm

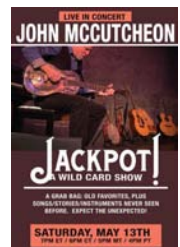
Live from Voorheesville, NY, and streaming, co-sponsored with Old Songs

Forty years and stronger than ever! "North Sea Gas" is one of Scotland's most popular folk bands with great vocals and tremendous three part harmonies. Guitars, Mandolin, Fiddle, Bouzouki, Harmonica, Whistles, Bodhrans, Banjo and good humour are all part of the entertainment. Tickets and further info: <https://oldsongs.org> †

John McCutcheon: Jackpot! (livestream), Saturday, May 13th; 7pm (EDT)

This is a wild card show. John will be singing some old favorites, but will also bring out instruments and songs sure to surprise and delight. Expect the unexpected and there might even be a surprise guest or two. Finish off the Winter/Spring online season with this

continued next page



Events Details, continued from previous page

fun show! Ticket link <http://bit.ly/McCutcheon-Jackpot> †

(Hybrid) Shanty Sing Session: Sunday, May 21st; 2-4pm

We co-sponsor the Shanty Sing on the 3rd Sunday of the month. The William Main Doerflinger Memorial Sea Shanty Sessions at the Noble Maritime Collection (to give the official title) has registration information on: <https://noblemaritime.org/events>. Previous Sessions are on-line, streaming at: <https://www.facebook.com/noblemaritime/videos> And see the documentary of this event (from when it was in person): vimeo.com/250883513 password: harbortown. †

**(hybrid) Sam Gleaves + Carrie & Michael Kline;
Saturday, May 13th; 2pm**

Sam Gleaves played for four years with the Berea College Bluegrass Ensemble. After graduating, Sam performed and taught in a wide variety of settings. With five studio recordings to his credit, Sam has shared music in the U.S., Canada, Italy, Ireland, England, and Japan. Appalachian author Lee Smith called Sam, "courageous as hell and country to the bone--the best young songwriter around." Sam currently serves as Bluegrass Ensemble Director and Appalachian Instruments Instructor at Berea College in Berea, Kentucky. (samgleaves.com)

Michael and Carrie Kline perform country harmony duets from coal mining songs to gospel, family songs and front porch music. Carrie and Michael's voices carry the songs with truth and authenticity, and their guitars and haunting harmonies get you where you live, evoking the times that really matter, time with family and friends, wrapped in a patchwork quilt of vivid imagery. Kitchen songs. You can smell the biscuits baking. (folktalk.org)

Cosponsored with and at the Peoples' Voice Cafe at the Judson Memorial Church Assembly Hall, 239 Thompson St. between West 3rd & West 4th Streets, Manhattan. Doors open 7:15pm. Mask required. Proof of Covid vaccination and/or negative Covid test strongly suggested but not required. Suggested contribution: \$20. PVC subscribers, FMSNY or Judson members, students, youth: \$12. Simultaneously live streamed. Info: <https://www.peoplesvoicecafe.org> or 212-787-3903. †

(FTF) Brooklyn Outdoor Song Circle; Saturday; May 13th; 2pm

Mount Prospect Park, Brooklyn. (Rain Dates TBA). A casual song-circle that has been meeting outdoors to minimize covid19 risk. Bring a song you'd like to share, or just sing-along and enjoy a few pleasant hours in the park. We aim to create a friendly, welcoming space where people can share whatever form of music they enjoy. Instruments, vocals and all skill levels are welcome.

The park is between the Brooklyn Central Library and The Brooklyn Museum on Eastern Parkway. Entry to the park is next to the gates of the Brooklyn Botanical Garden, at the Eastern Parkway stop of the 2/3 train. We'll be in the far south-east corner, or on the lawn, near the back of the park--Look for our banner. We recommend you bring a folding chair, cushion or blanket to sit on, as bench space is limited. Restrooms are available in the park and the Museum Lobby. We plan for the second Saturday each month, depending on the weather send a message to [parksongcircle\(at\)yahoo.com](mailto:parksongcircle(at)yahoo.com) to get updates if we must cancel or reschedule. †

continued on next page

Events Details, continued from previous page

(FTF) Songs of the English Music Hall: Friday, June 2nd; 7:30pm

Somewhere in the cracks between traditional folk song and modern pop music sits the Music Hall. The Music Hall developed from smoky singing clubs in the early Victorian period, but by the end of the 19th century there were thousands of them all over the United Kingdom ranging from seedy neighborhood flea pits to grand palaces ornate enough to rival any theatre. Upon their stages trod a rogues gallery of remarkable and eccentric characters, singing some remarkable and eccentric songs! Their audiences were ordinary people who saw a reflection of their lives and values and found comfort and relief from the grind of their daily existence in those same unforgettable songs.



Join us on June 2nd when Russ Chandler will tell some of the stories and sing some of the songs. Music Hall is closely related to the American Vaudeville tradition, and we'll discover some remarkable trans-Atlantic success stories as well as some surprising failures, including at least one murder! Then afterwards why not bring a favorite Vaudeville song to share? Russ Chandler is a musician and folk music activist based in Sheffield, England. He first heard the songs from his Cockney grandparents and loves finding forgotten gems that can still delight a modern audience.

This event will take place in a private residence in Woodside, Queens, NY, close to public transportation. Seating limited, reservations required. Please call Steve or Marilyn Suffet at 718-786-1533 or e-mail [steve\[at\]stevesuffet.com](mailto:steve[at]stevesuffet.com) for reservations, location, and directions. No admission charge, but voluntary contributions to help cover expenses are welcome. Vaccination and/or a negative covid test recommended but not required.

Porch Stomp: Saturday, June 17th; 11am-6pm

Take the ferry to Governors Island and join FMSNY for a free and participatory celebration of American folk music on the porches of Governors Island. This is an outdoor event (rain or shine) with dozens of bands performing folk, old-time, blues, roots, and Americana music. There is food on the Island or bring a picnic. Bring lawn chairs or a blanket for seating. Governors Island is only accessible by ferry book your ticket at <https://www.govisland.com/plan-your-visit/ferry>. See porchstomp.com and the upcoming June newsletter for more info. †

From the Editor 

Eileen Pentel

I hope that May is warmer than April has been. At least we have music to warm us and cheer us up. We have our usual Irish Music Sessions, Sunnyside Folk Club, Sea Chantey & Maritime Music, the Brooklyn Outdoor Song Circle and the Staten Island Hybrid Shanty Sing.

In addition to all of the above, this month we have the North Sea Gas (a folk band), Sam Gleaves + Carrie and Michael Kline, and John McCutcheon. On June 2nd, Russ Chandler will tell us all about the English Music Hall in song and stories.

We look forward to seeing you, both in person (FTF) or online!

Topical Listing of Society Events

(see this month's details on pages 2 - 4)

Concerts, Workshops & etc.

Fri, May 5: **North Sea Gas; Hybrid Old Songs Concert**, 7:30pm; live in Voorheesville & streaming †

Peoples' Voice Cafe; 8pm; hybrid †

Sat, May 13: **Sam Gleaves + Carrie and Michael Kline** †

Sat, October 21: **Anne Price + Sol y Canto** (Brian & Rosi Amador) †

Sat, October 28: **Kathy Wallis + Moe Keast** †

Sat, December 16: **Reggie Harris + Pat Wictor** †

Sat, May 13: **John McCutcheon: Jackpot!**, livesream concerts; 7:00pm (EDT)
<http://bit.ly/McCutcheon-Jackpot> †

Fri, June 2: **Songs of the English Music Hall**, a performance-talk with **Russ Chandler**; 7:30pm house concert in Queens, FTF

Sat, June 17: **Porch Stomp**; FTF; 11am-6pm on Governors Island †

Weekends and Weeks

Aug. 26-Sept. 1: TradMaD Camp; FTF at Pinewoods Camp, information and registration: <http://www.tradmadcamp.org>.

Late Oct. or early Nov. (date to be announced): Our **Fall Folk Music Weekend**.

Sings and Informal Jams

Irish Music Session: Mondays at the Landmark Tavern, 8-11pm, FTF †

Sunnyside Folk Club: Sanger Hall, Wednesdays, 8pm, FTF †

Sea Chanteys & Maritime Music, FTF at the South Street Seaport Museum: first Sunday 2-4pm, May 7, June 4, etc. †

Staten Is. Hybrid Shanty Session: 3rd Sun. of the month (May 21, June 18, etc.) †

Brooklyn Outdoor Song Circle: FTF, second Saturday (May 13, June 10, etc), 2-4pm; Mount Prospect Prk, Bklyn †

Folk Open Sing: First Wed. in Brooklyn; *will resume when possible*.

Gowanus Dredgers Boathouse Jam: *will resume in the Spring*, gowanuscanal.org †

Virtual Business Meetings, etc.

Board of Directors Zoom Meeting, 8pm, the 2nd Monday, (May 8, June 12, etc.).
Info: 718-672-6399.

† = not run by the club, but one we co-sponsor or co-list

FTF = Face to Face = in person; **hybrid** = both FTF and livestreamed

Help spread the word!

Can you help spread the word about our concerts? If you go to jams, sings, concerts, your office, anywhere (even your apartment laundry room) that you could put out flyers, help us by getting a supply of flyers to put out. Contact Don Wade, <[donwade\(at\)donwade.us](mailto:donwade(at)donwade.us)>, 718-426-8555 and let us know how many to send you!

The Society's Web Page: <http://fmsny.org>

Rhoda Cohen, R.I.P.

Rhoda Cohen, age 95, passed away on April 2, 2023. Rhoda was a passionate lover of traditional music. She was involved with folk groups in the New York City area and hosted many "sings" (as she called them) in her home. She vividly remembered, as a kindergartner, being assigned (by an inconsiderate music teacher) to be a "listener," so as not to distract those kids assigned as "singers." Regardless, she developed a passion for folk music.

During a career as an occupational therapist that spanned sixty years, she was a staunch advocate for the rights of citizens with disabilities. Over a period of several years, she spent some time crewing on the Hudson River sloop Clearwater, often crewing with Pete Seeger, who encouraged her to "sing at the top of your lungs!" Rhoda often hosted small jam sessions for folk, old-time, and bluegrass musicians, helping to instill a love of traditional music in her younger brother Allen and her daughter Ellen.

During the Covid years Rhoda enjoyed participating in a "rise up singing" jam on Zoom. She will be missed by the many people she touched with her kindness and her love of folk music.

-Ellen Vigour

Memorial Jam for Toby Fagenson Live In Person Event (FTF)

Sunday, June 11, 2023 2-4pm
in St. Catherin's Pocket Park
First Avenue between 67-68 streets in Manhattan.

Come join- in voice, instrument, or whatever.

Info 212-861-7019 (rain update)
jbabits@nyc.rr.com

FMSNY Archival Information

Several years ago Janice Quinter organized the music archive of the New York Pinewoods Folk Music Club for donation to the Library of Congress in Washington, D.C. The collection consists of sound recordings, photographs, flyers and press releases from 1971-2012, and now has been cataloged and is open to researchers for use. The URL for this collection is <https://lccn.loc.gov/2013655346>.

The URL for the New York Pinewoods Folk Music Club Newsletters (1964-2018) is <https://lccn.loc.gov/97640179>. Contact the Library of Congress's American Folklife Center for further information.

And our archive of pdf newsletter copies back to 2002 is at: <http://www.folkmusicny.org/archives/archives.html>

**The Society's Web Page: <http://FMSNY.org>
Facebook: <https://facebook.com/FMSNY/>**

Folk Music Society of New York, Inc.

FMSNY T-Shirts are Here!



The Folk Music Society of New York, Inc.
now has an online store!

Go to

<https://www.bonfire.com/store/folk-music-society-of-new-york/>
to see t-shirts, women's cut,
sweatshirts, and more.

Folk Music Virtual and Real Events Calendar

Most of these events are not run by the Club, and information given is the best available at press time. You should check to confirm they are still running. Contact information is given in the first listing for virtual events, and on p. 11 for live events. Send information for listing to: listings(at)folkmusicny.org or Margaret Murray, 1684 W. First Street, #C6, Brooklyn, New York 11223. DEADLINE is the 12th of the preceding month. This Calendar is updated online when late-breaking information is available.

Many live, in-person (FTF), events are also livestream (L/S)

#=event run by the club * = Club Member ++=multi-day festival

†=not a club event, but one we co-sponsor or co-list

VIRTUAL EVENTS - REPEATING

- | | | | |
|--|----|-----|--|
| Wednesdays: The Quiet Room: | 4 | Th | Rouge; 8pm; WMI |
| Facebook.com/jayandmollylive; 8pm | | | Omar Sosa & Seckou Keita - |
| Alternate Sunday zoom sings from the | | | Subu Revisited: Robert |
| Mermaid's Tavern in Boston: one | 6 | Sa | Browning Associates; 8pm |
| Sun., Ballads, & one Sun., Sea songs. | | | Ben Silver plus Brie Kelly : |
| http://crosscurrents.lynnol.com | 7 | Su† | Peoples Voice Cafe |
| A listing of Shanty sessions: https:// | | | Sea Chanteys & Maritime |
| www.bostonsongsessions.org/ | | | Music : hybrid at the Seaport; |
| virtual-sessions | 11 | Th | 2pm; see p. 2 |
| | | | The Emerald Isle Immigration |
| | | | Center Creatives -Songs of |
| | | | Spring Rebirth and Renewal, |
| | | | Abdoulaye Alhassane Toure, |
| | | | Mary Courtney, Alan Gogarty, |
| | | | Jeff Lum (filmmaker), Erika |
| | | | Gregorio Lopez and painter |
| | | | Alejandro Pinza - artists in |
| | | | residence: NY Irish Center; 7p |

VIRTUAL EVENTS - MAY

- | | | | |
|----|-----|---|--|
| 2 | Tu | Circle Round the Sun: | |
| | | Streaming Tuesdays: | |
| | | folkproject.org; 7pm | |
| 6 | Sa† | North Sea Gas (hybrid from Old | |
| | | Songs); 7:30pm; see p. 2 | |
| 9 | Tu | Spook Handy: Streaming | |
| | | Tuesdays: folkproject.org; 7pm | |
| 12 | Fr | Sam Brown, May Elaine | |
| | | Jenkins plus Her Dark Heaven: | |
| | | Free Music Fri.; Facebook Live; | |
| | | 6-7:30pm; folkartmuseum.org | |
| 13 | Sa† | John McCutcheon: Jackpot! | |
| | | <i>livestreamed</i> ; 7pm; see pp 2-3 | |
| 16 | Tu | Brett Adam Fuentes: Streaming | |
| | | Tuesdays: folkproject.org; 7pm | |
| 21 | Su† | Staten Island hybrid Shanty | |
| | | Sing ; 2pm; see p. 3 | |
| 23 | Tu | Diane Patterson: Streaming | |
| | | Tuesdays: folkproject.org; 7pm | |
| 30 | Tu | Daniel Cainer: Streaming | |
| | | Tuesdays: folkproject.org; 7pm | |

LIVE EVENTS - NEW YORK CITY - MAY

- | | | | | |
|----------------------|--------------------------------|-----------------------------------|----|--------------------------------------|
| <i>Mondays</i> †: | Irish Traditional Music | 21 | Su | Gathering Time ; Good CH, 4pm |
| | Session at the Landmark: 8pm; | 25 | Th | Hermeto Pascoal & Grupo - |
| | see p. 2 | | | Night 1: Pioneer Works, 159 |
| <i>Wednesdays</i> †: | Sunnyside Folk Club: | | | Pioneer St., Brooklyn 11231; |
| | Sanger Hall, Sunnyside; 8pm; | | | WMI; SOLD OUT |
| | see p. 2 | 26 | Fr | Hermeto Pascoal & Grupo - |
| 3 | We | ADG7 (AK Dan Guang Chil) - | | Night 2: (le) poisson rouge, |
| | | Counterpoint Series: le Poisson | | NYC; 8pm; WMI |

LIVE EVENTS - NEW YORK CITY - JUNE

- 2 Fr# Songs of English Music Hall, a performance-talk with **Russ Chandler**, house concert: Woodside, Queens, location; see p. 3
- 3 Sa **Kiran Ahluwalia** with Yacouba Sissoko: Flushing Town Hall, 137-35 Northern Blvd., Queens; 8pm; WMI

LIVE EVENTS - LONG ISLAND - MAY

- 17 We Hard Luck Cafe - **Robinson & Rohe**; FMSH; 7pm

LIVE EVENTS - LONG ISLAND - JUNE

- 2 Fr **Tom Rush & Loudon Wainwright III**: Landmark on Main Street; 8pm

LIVE EVENTS - NEW YORK STATE - MAY

- 4 Th **Seamus Egan Project**: Caffe Lena; 7pm
- 5 Fr **Dirty Grass Players**: Caffe Lena; 8pm
- 5 Fr **Sally Rogers/Claudia Schmidt/Emma's Revolution**: The Eighth Step; 7:30pm
- 5 Fr **Tempest**: Towne Crier; 8:30pm
- 5 Fr **Le Vend du Nord**: the Folkus; 8pm
- 6 Sa **Folk Talk Trio** - Little Folks Series: Caffe Lena; 3-4:30pm; *free*
- 6 Sa **Heard**: Caffe Lena; 8pm
- 6 Sa **Vern Lindley Birthday Concert** with many performers; reception follows; Golden Link
- 6 Sa **Le Vend du Nord**: Towne Crier; 8:30pm
- 7 Su **Dia de las Familias** - celebrating Latin culture, food, music and the arts with **Radio Jarocho** and the **Noche Buena Band**: the Ashokan Center; 10am-3pm; *free*
- 7 Su **7th Annual Pete Seeger Fest**: Tompkins Corners Cultural Ctr.; 2-5pm
- 7 Su New York Folklore presents Jewish Folk Music with the **Kleiner Klezmer Orchestra** and **Joshua Sussman**: The Linda; 3pm
- 7 Su **The Sweet Lilies** - Bright Series:

- Caffe Lena; 7pm
- 12 Fr **Dar Williams**: Towne Crier; 8:30pm
- 12 Fr **Yasmin Williams**: Caramoor Ctr. for Music and Art; Katonah; 8pm; caramoor.org
- ++12-14 **Scottish String Fling 2023** with Alasdair Fraser and Natalie Haas: the Ashokan Center
- 13 Sa **Cliff Eberhardt**: Turning Point; 8pm
- 13 Sa **Back to the Garden 1969**: Towne Crier; 8:30pm
- 13 Sa **Maggie 50th Anniversary Kick-Off**: Caffe Lena
- 13 Sa **Hey Mavis**: Golden Link
- 13 Sa **Phil Ochs Song Night** - Hudson River Sampler - coordinated by **Sonny Ochs** and hosted by **Wanda Fisher**; line-up TBA; 8p
- 13 Sa **The Sea The Sea**: River Spirit Music
- 14 Su **Alasdair Fraser & Natalie Haas** concert 2023: the Ashokan Center; 3pm
- 19 Fr **Sara Milonovich & Daisycutter**; special guest **Jeff Wilkinson**: Towne Crier; 8:30pm
- 19 Fr **Dar Williams**: the Folkus; 8pm
- ++19-21 **Old Time Rollick 2023**: the Ashokan Center
- 20 Sa **Tom Chapin**: Walkabout Clearwater Coffeehouse
- 20 Sa **Joe Crookston**: Common Ground Community Concerts; 7:30pm
- 20 Sa Folk Heritage Series - **Garnet Rogers**: Caffe Lena; 8pm
- 21 Su **Old Blind Dogs**: Towne Crier; 7pm
- 21 Su **Old Time Open House 2023**: the Ashokan Center.; 1-3pm; lunch buffet avail. at 12:30pm
- 25 Th **Dom Flemons** Album Release: Caffe Lena; 7pm
- 26 Fr **Antje Duvokot** - Womens Voices Concert Series: The Linda; 8pm
- 26 Fr **Aztec Two-Step 2.0** featuring Rex Fowler, Dodie Petit & Friends: Towne Crier; 8:30pm
- ++26-29 **Uke Fest 2023**: Ashokan Center.
- 27 Sa **Uke Revue 2023**: Ashokan Center.; 7:30pm
- 28 Su **Bob Dylan Birthday Bash** with

Calendar Listings, live events continued from previous page

- "Old Bob" tribute band: Towne Crier; 7pm
28 Su **Happy Traum** and **Jim Kweskin**: The Linda; 7:30pm

LIVE EVENTS - NEW YORK STATE - JUNE

- 1 Th **Never Come Down**: Caffe Lena; 7pm
2 Fr **Eric Andersen**: Caffe Lena; 8pm
2 Fr **Rock Hearts**: Emelin Theater; 8pm
3 Sa Little Folks Show with **Moose jr.**: 3-4:30pm; *free*
3 Sa **Roy Bookbinder**: Caffe Lena; 8pm
3 Sa **Lynne Hanson**: Golden Link
3 Sa **The Rough and Tumble**: the Grange at Whallonsburg; 7:30pm
3 Sa **Chris Smither**: Turning Point; 8pm
4 Su **Bruce T. Carroll Band**; also appearing **The Wild Life Band**: Turning Point; 4pm
4 Su **Chris Smither**: Caffe Lena; 7pm
6 Tu **Dan Bern**: Turning Point; 7:30pm

LIVE EVENTS - NEW JERSEY - MAY

- 5 Fr **Enrico Granafei & Kristine Massari** with opener **Frank & Hank**: the Troubadour
5 Fr **Warren Zanes** - *Finding Nebraska* and joined by Laura Cantrell and James Maddock in storytelling and performance; presented by Succeed Together's Montclair Literary Festival and Outpost: Outpost in the Burbs; 7pm
6 Sa **Abbie Gardner**: Hurdy Gurdy
18 Th **Lone Bellow Trio** - *Love for Losers Tour*: Outpost in the Burbs
19 Fr **Mara Levine*** co-bill with **Gathering Time**: Princeton FMS; 8pm; FTF & livestream
++19-20 **The Folk Project's Golden Jubilee** presented by Acoustic Getaway and featuring **Frank Vignola** with **Vinnie Vignola** and **Robinson & Rohe** plus

- many more; Fri. eve. concert; Sat. afternoon activities and workshops, Sat. dinner and Sat. evening concert: Folk Project
26 Fr **Buskin & Batteau** plus **Stacia Thiel**: the Troubadour

LIVE EVENTS - NEW JERSEY - JUNE

- 2 Fr Songs, Stories and Art with **Bill Buttner** - a multimedia presentation: the Troubadour

LIVE EVENTS - CONNECTICUT - MAY

- 4 Th **Jimmy Webb** - The Glen Campbell Years - multimedia presentation: Ridgefield Playhouse; 7:30pm
5 Fr **Rock Hearts**: Guitartown CT Productions; 7:30pm
6 Sa **Gil Gutierrez**: Northwest Park Concert Series
6 Sa **Amy Rigby**: Packing House; 7:30pm
13 Sa **Atwater-Donnelly**: Vanilla Bean Cafe; 7pm
13 Sa **The Portable Folk Festival** (The Portables): Sounding Board
14 Su **Ellis Paul**: Vanilla Bean Cafe; 7pm
19 Fr **Horizon Blue Band**: Meeting House Presents
19 Fr **Kate Prascher**: the Buttonwood Tree; 8pm
19 Fr **Sally Rogers**: Friday Night Folk; 7:30pm
20 Sa **The Consequences**: Shamrock Traditional Music Society
21 Su **Ricky Skaggs & Kentucky Thunder**: Ridgefield Playhouse; 7:30pm
24 We **Hunter Hayes** - *The Red Sky Tour* with opener **Loren Grey**: Ridgefield Playhouse; 8pm
26 Fr **Dom Flemons**: East Rock Concert Series; 7pm
26 Fr **Becky Kessler** plus **Xavier Serrano**: Buttonwood Tree; 8pm
LIVE EVENTS - CONNECTICUT - JUNE
2 Fr **Mighty Mystic**: Buttonwood Tree; 8pm

The Society's Web Page: <http://FMSNY.org>

Folk Calendar Listings Info

This list gives more detailed information for many locations listed in the chronological **LIVE** Events Listings. Corrections to this list are most welcome! Send info to: Don Wade, 35-41 72nd St, Jksn Hts, NY 11372 718-426-8555, Don(at)folkmusicny.org.

AROUND TOWN (5 boroughs of NYC)

Brooklyn Bowl, 61 Wythe Avenue, Brooklyn 8pm WMI

CDNY dances at Church of the Village, 201 W. 13th St., NYC 7:30pm cdny.org

Flushing Town Hall, 137-35 Northern Boulevard (at the corner of Linden Place) (718) 463-7700, ext. 222 (Box Office) www.flushingtownhall.org

Good Coffeehouse, The Little Victory Theater, 4089 Victory Blvd. Staten Island, 4-6pm, \$18 info: fbanjo@aol.com

Jalopy, 315 Columbia St., Brooklyn, 11231 718-395-3214 jalopytheatre.org/

Kaufman Music Center, 129 W 67 St (btw B'way & Amsterdam) 212-501-3303 https://kaufmanmusiccenter.org

Landmark Tavern, 626 11th Avenue (on 46th St) co-sponsored with and led by Don Meade for info 212-247-2562 or http://www.thelandmarktavern.org/events.php

le Poisson Rouge, 158 Bleecker St., NYC 8pm

NY Irish Center, 10-40 Jackson Av, LIC (Queens) 718-442-8560: newyorkirishcenter.org

Peoples' Voice Cafe (PVC) Sat 8PM at Judson Memorial Church, 239 Thompson St info: 212-787-3903, see ad page 10. www.peoplesvoicecafe.org \$20

Robert Browning Associates, various locations robertbrowningassociates.com

Seaport South Street Seaport, 2-4pm see p. 2

Sunnyside Folk Club Sanger Hall, 8pm sings Wednesdays-see page 2

Tavern Concerts Historic Richmondtown: S. I. Historical Soc., 441 Clarke Ave, Staten Island 6 & 8 pm \$15 Free parking. 15-minute drive from all bridges to S. I. Bus S 74 from the Staten Island Ferry. Beer, wine and hot apple cider are available. Info: historicrichmondtown.org or call 718 351-1611 x241 for information or to make reservations. (Dinner available next door at M. Bennett Refreshments, 718-983-6715)

Voices in the Heights, First Unitarian Cong. Society, 119 Pierrepont St, Brooklyn 7:30pm www.voicesintheheights.org

WMI-World Music Institute: (usually 8pm): worldmusicinstitute.org 212-545-7536

LONG ISLAND

FMSH (Hard Luck Cafe)=Huntington Folk Music Society § (PO Box 290, Huntington Station 11746) 1st Saturday Concerts at the Cong Ch of Huntington, 30 Washington Dr, Centerport also Hard Luck Cafe concerts on the 3rd Thursday at the Sky Room of the Cinema Arts Center, 423 Park Ave. http://fmsh.org/

Hard Luck Cafe: 3rd Thursday at the Sky Room of the Cinema Arts Center, 423 Park Ave., Huntington run by Huntington FMS--see FMSH.

Landmark on Main Street, 232 Main St, Port Washington 516-767-6444 8pm in Jeanne Rimsky Theater www.LandmarkonMainStreet.org

UPSTATE NEW YORK

Ashokan Center, 477 Beaverkill Rd., Olivebridge 845-657-8333 ashokancenter.org

Caffè Lena, 47 Phila St., Saratoga Springs 518-583-0022 www.caffelena.org

Common Ground Community Concerts, South Prby Church, 343 B'way, Dobbs Ferry

Eighth Step CH 8th Step at Proctors, 432 State St., Schenectady 518-434-1703

Emelin Theater Library La, Mamaroneck, 8:30pm 914-698-0098 emelin.org

Folkus concerts at May Memorial Unitarian Universalist Society, 3800 East Genesee St, Syracuse, N.Y. http://www.folkus.org/ Box 197, DeWitt, NY

Golden Link Folk Song Society (Rochester, NY Area): concerts at Rochester Christian

Reformed Church, 2750 Atlantic Ave, Penfield, NY 14526, 7:30pm goldenlink.org
Grange at Whallonsburg, 1610 NY Rte 22, Essex, NY 12936 518-963-7777 https://

continued on next page

Listings Information continued from previous page

www.thegrangehall.info/

The Linda, 339 Central Ave., Albany 12206 8pm 518-465-5233

Old Songs, Inc, PO Box 466, 37 South Main St, Voorheesville 12186 518-765-2815

www.oldsongs.org

River Spirit Music house concerts, 5pm in Hastings-on Hudson (potluck at 4pm) <http://www.riverspiritmusic.com/houseconcerts> (347)MUSIC-76

TCCC =Tompkins Corners Cultural Center, 729 Peekskill Hollow Road. Putnam Valley,

NY. Donation \$15 tompskinscorners.org 845-528-7280.

Towne Crier Cafe, 379 Main St, Beacon, 845-855-1300 www.townecrier.com 6:30pm

Turning Point, 468 Piermont Ave., Piermont, Rockland County (south of Nyack) (845) 359-1089 food avail www.piermont-ny.com/turning

Walkabout Clearwater Coffeehouse 7:30PM, CUUC, 468 Rosedale Ave., White Plains 914-242-0374 <http://walkaboutchorus.org/music/coffeehouse.php> 2nd Sat

NEW JERSEY

Folk Project: §, POB 41, Mendham 07945 973-335-9489 <http://folkproject.org>

Hurdy Gurdy Folk Music C'hse: Fairlawn Community Center, 10-10 Kipp St, Fairlawn info: 201-384-1325, 1st Sat, 8pm, § hurdygurdyfolk.org.

Outpost in the "Burbs" Coffeehouse The Unitarian Church of Montclair or the Montclair H. S. Auditorium twice monthly 8:30pm 973-744-6560 outpostintheburbs.org

Princeton Folk Music Soc. § usually cnerts 3rd Fri. at Christ Cong. Church, 55 Walnut Lane, Princeton \$25 (\$20 NYPFMC members) www.princetonfolk.org

Troubadour Coffeehouse Fri, 7:45pm, \$7 (2nd Fri, open stage) Morristown Unitarian Fellowship, 21 Normandy Heights Rd, Morristown, NJ. (Run by Folk Project, www.folkproject.org Sat concert info: 973-335-9489

CONNECTICUT

Bread Box, St. Paul's Episcopal Church 220 Valley St. Willimantic CT, 7:30 pm.

Reservations, 860-429-4220 Open mic third Wednesday usually \$10 adm

Buttonwood Tree, 605 Main St., Middletown 860-347-4957 www.buttonwood.org

East Rock Cnrt Series, 285 Nicoll St, New Haven mactivity.com

fernandopintopresents.com

Friday Night Folk Cfehse, All Souls Universalist Unitarian Congregation, 19 Jay St., New London 860-443-0316 www.fridaynightfolk.org

GuitartownCT Productions Cafe Amici, 1640 Whitney Ave., Hamden 203-430-4060 or www.guitartownct.com

Meeting House Presents Concert Series Unitarian Soc. of Hartford ushartford.com 8pm

Northwest Park Concert Series, Northwest Park Nature Center, 145 Lang Road, Windsor, CT, 860-285-1886 7:30pm <http://www.northwestpark.org>

Packing House, 156 River Rd., Willington 518-791-9474 <http://thepackinghouse.us>

Ridgefield Playhouse. 80 East Ridge, Ridgefield, 203-438-5795 ridgefieldplayhouse.org

Salmon Brook Music Series, Salmon Brook Music Series, South Congregational Church Hall, 242 Salmon Brook St, Granby 06035, 860-916-5066 7:30pm, \$18

Shamrock Traditional Irish Music Soc. 7:30pm Gaelic-Amer. Club, 74 Beach Rd, Fairfield

Sounding Board C.H., Universalist Church of West Hartford, 433 Fern St., West Hartford CT Sat's, 8pm, \$10, <https://thesoundingboard.org/>

Vanilla Bean Café, corner of 44, 169 & 97, Pomfret 8pm Sat eve's plus first Fri open mike, 860-928-1562 www.thevanillabeancafe.com \$5-15

TradMaD Camp; Aug. 26 - Sept. 1

Register now for TradMaD Camp at Pinewoods Camp

(FTF in Plymouth, Mass) <http://tradmadcamp.org/>

Folk Music Society of NY, Inc Information

NEWSLETTER INFO. (ISSN 10414150)

The Folk Music Society of New York, Inc./NY Pinewoods Folk Music Club was started in 1965 and is a 501(c)(3) non-profit, educational corporation an affiliate of the Country Dance & Song Society of America and a member of the Folk Alliance. Our annual report is available from our office, 444 W. 54 St, #7, NYC, NY 10019 or from the Office of Charities Registration, N.Y. Dept. of State, 162 Washington Av, Albany, NY 12232. We have approximately 200 members and run concerts, week-ends, classes, and get-togethers, all with an emphasis on traditional music. The Society is run entirely by volunteers with a Board of Directors elected by the membership. The working officers below (members of and elected by the board) welcome your help and suggestions.

Memberships are listed on the back page regular memberships help support the society and include one newsletter subscription (11 issues yearly) and reduced admissions. Won't you join us?

2023 Board of Directors:

Treasurer: Heather Wood, 444 W. 54th St, #7, NYC, NY 10019 646-628-4604
<treasurer(at)folkmusicny.org>

Membership Rosalie Friend, 550 Fifth Ave, Brooklyn, NY <membership(at)folkmusicny.org>

Program: Heather Wood, 444 W. 54th St, #7, NYC, NY 10019 646-628-4604
<program(at)folkmusicny.org>

Education Chair: Marie Mularczyk, 52-07 Leith Place, Little Neck, NY 11362 718-819-8009
<mmularczyk(at)nyc.rr.com>

Social Chair: Betsy Mayer, 318 E. 90th St. #3W, NYC, NY 10128 646-599-6747
<betsylmayer(at)gmail.com>

President: Clarice Kjerulff, 34-13 87th Street, Jackson Heights, NY 11372 718-429-3437
<president(at)folkmusicny.org>

Vice-President: Rosalie Friend, 718-965-4074
<vicepres(at)folkmusicny.org>

Publicity: Lynn Cole with Rosalie Friend
Lynn, 83-10 35 Av, #2W, Jackson Hts, NY 11372 919-308-9526
<publicity(at)folkmusicny.org>

Newsletter: Eileen Pentel, 35-41 72nd St., Jackson Heights, NY 11372 718-672-6399
<newsletter(at)folkmusicny.org>

Scholarship Coordinator: Heather Wood, 444 W. 54th St, #7, NYC, NY 10019 646-628-4604 <treasurer(at)folkmusicny.org>

Corporate & Recording Secretary: Rosalie Friend, 718-965-4074

Other Board Members: Lafayette Matthews, Margaret Murray, Linnea Paton, Jules Peiperl, Marilyn Suffet, Steve Suffet, Don Wade

Weekend Coordinator: Joy C. Bennett

TradMaD Camp co-Directors: Joy C. Bennett and Heather Wood

Reciprocal Arrangements: The Society has reciprocal members' admission agreements with CD*NY, Princeton FMS, The Folk Project (NJ), and, LITMA

Publisher: Folk Music Society of N.Y., Inc., 444 W. 54 St., #7, NYC, NY 10019. © 2021

DEADLINE: the 12th of the month prior to publication.

Send address changes to the database geru: Don Wade, 35-41 72 St, Jackson Heights, NY 11372 membership(at)folkmusicny.org

Editor: Eileen Pentel, 35-41 72nd St, Jackson Hts, NY 11372 718-672-6399. <newsletter(at)folkmusicny.org> *Send all Hotlines & ads (with check made out to FMSNY) and all correspondence & articles ONLY to this address.*

Send calendar or listings info directly to the appropriate person below (no charge for listing):

Events Calendar: Margaret Murray, 1684 W. First Street, #C6, Brooklyn, NY 11223.
<listings(at)folkmusicny.org>

Locations: Don Wade, 35-41 72 St, Jcksn Hts, NY 11372 <Don(at)folkmusicny.org>

Calligraphy Headings: Anthony Bloch

Front Cover Heading: Patricia Greene

Layout Program: Scribus 1.5.4

Printer's Devil and Layout:

Don Wade <Don(at)folkmusicny.org>

Other Staff: Lynn Cole, Ruth Lipman, Judy Polish

All members are encouraged to submit articles on folk music & related subjects, and book, concert, and record reviews. Preferably **submit articles and ads via E-mail to Don(at)folkmusicny.org.** (PDF, ASCII, .txt, .odt, .doc, or .docx format) or else type them. Please be sure to include your day & evening phone numbers and keep a copy.

Newsletters are sent by first class mail or on-line to members on or about the first of each month (except August). Views expressed in signed articles and ads represent those of the author and not necessarily those of the society.

Newsletter Display Ad Rates

(our Federal ID number is 13-346848):

Full Page \$120 Size: 4-5/8 W x 7-3/4 H

1/2 Page \$60 Size: 4-5/8 W x 3-3/4 H

1/4 Page \$30 Size: 2-1/4 W x 3-3/4 H

1/8 Page \$15 Size: 2-1/4 W x 1-3/4 H

(less 10% for repeating ads paid in advance)

Sizes are actual print size for camera-ready copy and will be reduced if oversize. Preferably **ads should be supplied via e-mail**, in JPG, TIF, PCX, BMP, or WMF format or laid out camera-ready delivered, and paid before the deadline (textual ads should be in ODT, DOC, or DOCX). The Editor has no facilities for doing art work and ads which are sloppily laid out will be refused! Ads are subject to the approval of the newsletter committee. Page or position placement cannot be guaranteed.

website: www.folkmusicny.org

facebook: https://www.facebook.com/FMSNY/

Twitter: www.twitter.com/FolkMusicNY

E-Mail: <info(at)folkmusicny.org> (but it is best to send to individual officers as listed above).

Picture Scrapbook & newsletter archives:
www.folkmusicny.org/Scrapbook/Scrapbook.html

What's up with (at)? To prevent harvesting of e-mail addresses, we replace @ with (at).



Mark S. Hamburgh
Attorney at Law

Longtime Pinewoods member

- Wills, Trusts, Estate Planning
- Probate & Estate Administration
- Elder Law - Powers of Attorney, Medicaid, Guardianships
- Sales and purchases of real estate, coops and condos

450 Seventh Avenue, Suite 1308
(34th and 35th Streets)

New York, NY 10123-1308

tel: 212-947-0565; fax: 212-629-5825

mark@markhamburghlaw.com

www.markhamburghlaw.com

www.linkedin.com/in/markhamburgh

Attorney Advertising

PEOPLES' VOICE



Peoples' Voice Cafe
at the **Judson Memorial Church**
Assembly Hall

239 Thompson St. • New York NY 10012

In-person & on-line, see website.

Saturday at 8:00 PM. Doors open 7:15 PM

Masks required. Vaccination and/or negative covid test strongly recommended.

May 6: Ben Silver + Brie Kelly

May 13: Sam Gleaves +

Carrie & Michael Kline

May 20: Kent State / Jackson State
Memorial Program with Magpie

Fall season begins September 9.

Suggested donation: \$20

PVC subscribers, students, youth: \$12

FMSNY or Judson members: \$12.

More if you choose, less if you can't.

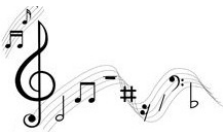
No one turned away for lack of money.

212-787-3903 www.peoplesvoicecafe.org

TradMaD Camp
Aug. 26 - Sept. 1

Registration is now open for TradMaD Camp at Pinewoods Camp (FTF in Plymouth, Mass)

Register now! <http://tradmadcamp.org/>



Help spread the word!

Can you help spread the word about our concerts? If you go to jams, sings, concerts, your office, anywhere (even your apartment laundry room) that you could put out flyers, help us by getting a supply of flyers to put out. Contact Don Wade, <donwade(at)donwade.us>, 718-426-8555 and let us know how many to send you!

Doodle Section

PRENEWAL

Your membership expiration date is printed on your newsletter mailing label. If you send in your renewal before it expires, you will save wear and tear on our Membership Chair, and also save the club the cost of mailing you a reminder. Address to send to is on the back cover membership blank.

Thank you.

The Society's Web Page: <http://fmsny.org>

Pinewood's Hot Line

Notices 40 words or less RATES: \$10 each Hotline per month (\$5 for members), 1/2 year for \$25 (\$15 for members), one year \$50 (\$25 members). Members please include mailing label or ID number for discount. (Lost & Found ads are free.)

Send all ads to: Eileen Pentel, 35-41 72nd St, Jackson Heights, NY 11372. We will be happy to accept text by E-mail with the text as part of the message (coincident with mailing your check) to Don(at)folkmusicny.org. All must be prepaid, make checks to: Folk Music Society of NY, Inc. (FMSNY). [Last run date is in brackets.]

Sound reinforcement: Your program deserves the best, whether it's a concert or a large festival. Location recording: Direct to stereo or Digital multi-track recording and editing. Acoustic Folk and Classical are specialties. Don Wade, Collegium Sound 718-426-8555 Don(at)collegiumsound.com. [1-24]

Minstrel Records: Bob Coltman, David Jones, Jack Langstaff, Almeda Riddle, Frank Warner, Jeff Warner & Jeff Davis, Jerry Epstein, Dwayne Thorpe, Sonja Savig. On LP, newer releases on CD. www.minstrelrecords.com or Minstrel Records, 35-41 72 St, Jackson Hts, NY 11372, 718-426-8555. [1-24]

Come do English and American country dancing with Country Dance*NY!
see: www.cdney.org for info.

Entertainment/Arts Attorney—Making a record? Publishing your book? Collaborating on a score, play, film? Licensing copyrights? Registering Trademark? Forming LLC or incorporating non-profit? I negotiate fair agreements, draft readable contracts, file forms, mediate disputes. Law Office of Leslie Berman, P.C., 631-675-1139, [leslie\(at\)lesliebermanlawfirm.com](mailto:leslie(at)lesliebermanlawfirm.com). *Attorney Advertising.* [3-24]

If you are the proud parent of one of the hotlines, please check the ending date. Send in your renewal before the 12th of the preceding month to have it continue.

Web Helpers Wanted

We need help in maintaining a presence on various web sites and/or posting concerts. If you can help, contact [Don\(at\)folkmusicny.org](mailto:Don(at)folkmusicny.org), 718-672-6399.

Some More Internet Stuff

•The late Alan Lomax left a huge archive of music. His Association for Cultural Equity is now headed by his daughter, the anthropologist Anna Lomax Wood. (Dr. Wood and her father both have participated in programs for the Folk Music Society of NY.) Finally Lomax's archive has been digitized and made available at <http://theglobaljukebox.org>.

•Twenty-five thousand songs recorded onto 78RPM discs in the early 20th century have been released online, for free at <https://archive.org/details/georgeblood>, They are the first batch of an estimated 400,000-piece virtual record collection to be made available by the Internet Archive, from gospel by the Tuskegee Institute Sings, to opera recorded in Italy, to novelty tunes by Spike Jones, to hot jazz.

•The Séamus Connolly Collection of Irish Music is a new huge and impressive collection (with audio) of Irish music: <http://connollymusiccollection.bc.edu>


 Folk Music Society of N.Y. Inc.
 NY Pinewoods Folk Music Club
 444 W. 54 St. #7
 New York, NY 10019
 www.folkmusicny.org
Tradmad Camp
Sat, Aug. 26 - Sept. 1
Register now!
<http://tradmadcamp.org>

FIRST CLASS MAIL



May 2023

Membership Form - JOIN US!
 (For a sample newsletter, write to the Membership secretary—address below.)
 To join (or to renew) and receive the newsletter regularly, you may join online at <http://fmsny.eventbrite.com> or mail this to:
FMS membership, Rosalie Friend,
; membership(at)folkmusicny.org.
MAKE ALL CHECKS PAYABLE TO: FMSNY
 (Folk Music Society of New York, Inc.)

Yearly Dues
 \$38 individual; \$55 family/dual;
 low income/full-time student:
 \$25 individual; \$30 family
 (low income is a hardship category for those who can't otherwise afford to join).
 (please state reason: _____)

Two Year dues:
 \$70 individual; \$100 family/dual
Lifetime: \$700 ind.; \$1000 family/dual
 Memberships above include newsletter and reduced admission to concerts & most events.

Long Distance Membership (more than 50 miles from midtown Manhattan):
 Yearly: \$30 Individual; \$48 family/dual
 Includes newsletter, weekend discounts, and voting privileges.

I wish to be a supporting member, my check includes an additional \$ _____ over regular dues. (Additional contributions are tax deductible, as permitted by law.)
 renewal (exp month: _____)
 new (How did you first hear about us? _____)

Send the newsletter online, mail, both

Name(s)-if not printed at left: _____

Address: _____

City: _____

State: _____ ZIP _____

Telephone (_____) _____

E-Mail: _____

Family memberships: please list the names of others in the same household not listed above
 adults: _____
 children: _____

I want to help: with the newsletter; I can help with _____